

TomTom car kit

What's in the box?

- TomTom car kit
- Car charger
- Adhesive disk
- User guide

Getting started

Your TomTom car kit for iPhone is designed to provide you with the best possible navigation experience.

A built-in GPS receiver enhances your iPhone's GPS signal, ensuring the most reliable navigation, wherever you are.

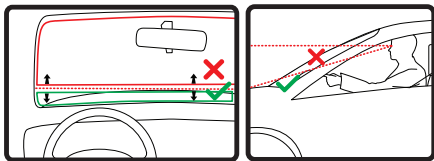
Using the car kit, you get loud and clear voice instructions, can make hands-free calls, as well as charge your iPhone while you drive. The car kit is a safe and secure dock with the award-winning fold-and-go EasyPort® mount.

Positioning the TomTom car kit

Consider carefully where to attach the car kit in your car. The car kit should not block or interfere in any way with the following:

- Your view of the road
- Any of the controls in your car
- Any of your mirrors
- The airbag

You should be able to reach your iPhone easily when it is in the dock without leaning or stretching. The diagrams show where you can safely attach the dock.



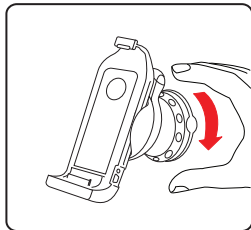
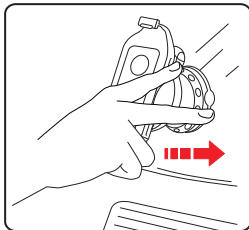
You can attach the dock to the windshield, side window or use an Adhesive Disk to attach the dock to your dashboard.

TomTom car kit

Installing the car kit in your car

Make sure that both the suction cup on the car kit and your window are clean and dry.

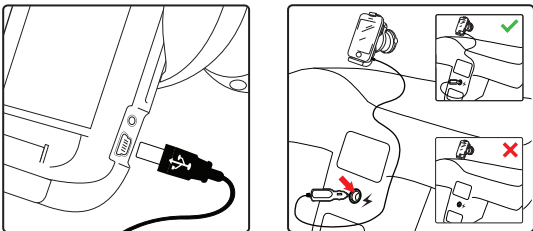
1. Connect the USB car charger to the USB port on the right side of the TomTom car kit.
2. Firmly press the suction cup against the windshield in your car with the ball joint facing upwards. Twist the plastic grip near the base of the mount in a clockwise direction into the lock position.



3. Insert the car charger in your cigarette lighter adapter.

Note: *The car charger needs to be plugged into your cigarette lighter at all times.*

The TomTom car kit is now installed.



To mount the TomTom car kit in a different location, you can use the included adhesive disk to attach the car kit to your dashboard.

Before you use an adhesive disk, make sure your dashboard is clean and dry. Then remove and discard the plastic film from the adhesive layer and place the disk on your dashboard.

Do not affix the dashboard mounting disk in an area where safety can be compromised, such as above an airbag or where it may obstruct your view of the road.

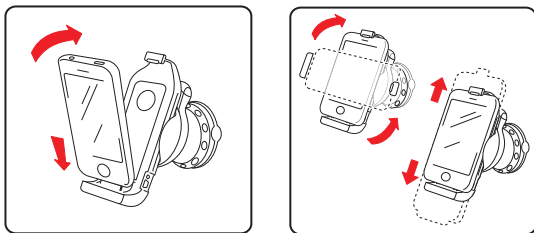
Follow the steps above to mount the car kit on the adhesive disk.

TomTom car kit

Placing your iPhone in the TomTom car kit

Carefully place your iPhone into the car kit, as shown in the diagram. Start by placing the bottom of the iPhone on the connector; then push the top of the iPhone securely into place.

You can rotate the holder and adjust the height of the holder to find the best position and orientation for your iPhone.



To remove your iPhone from the car kit, first release the top of your iPhone by placing your thumb against the top of the car kit while gently pushing the back of your iPhone with your fingers.

Lift and remove the iPhone from the car kit.

Note: TomTom has designed the TomTom car kit for iPhone specifically for iPhone use and has taken every precaution to make sure you have the best possible user experience. TomTom does not accept any responsibility for any damage to devices used with this accessory. To review our warranty go to www.tomtom.com/legal.

Bluetooth connection

To use your TomTom car kit with your iPhone, you need to establish a Bluetooth connection in the following way.

1. Tap **Settings** on the main screen of your iPhone.
2. Tap **General**, then tap **Bluetooth**.
3. Switch on Bluetooth.

Your iPhone searches for Bluetooth devices.

TomTom car kit appears in the list of devices.

4. Tap **TomTom car kit**.
5. Enter the password, which is 5555.
6. Tap Done.

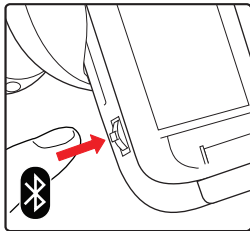
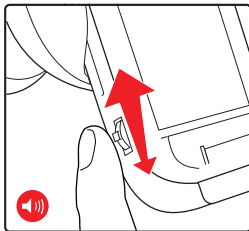
Your iPhone is now connected to your TomTom car kit.

TomTom car kit

Bluetooth reset and volume control

The TomTom car kit can pair with up to 8 different iPhones. To remove all paired devices, or if the car kit does not connect properly to your iPhone, press and hold the volume button for 8 seconds. You should now establish the Bluetooth connection between your iPhone and the car kit again.

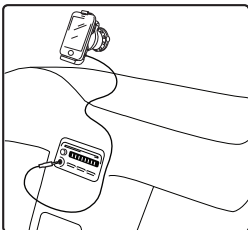
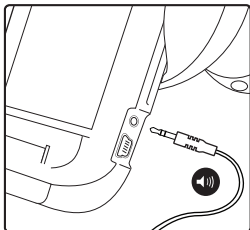
To adjust the volume, move the volume control up or down.



Connecting to your car stereo

To play music on your iPhone through your car stereo, connect the TomTom car kit to the car stereo using a 3.5mm mini stereo audio cable (not supplied).

Note: Hands-free calls are not played over the car stereo.



Addendum

Addendum

Important Safety Notices and Warnings

Global Positioning System

The Global Positioning System (GPS) is a satellite-based system that provides location and timing information around the globe. GPS is operated and controlled under the sole responsibility of the Government of the United States of America, which is responsible for its availability and accuracy. Any changes in GPS availability and accuracy, or in environmental conditions, may impact the operation of your TomTom device. TomTom does not accept any liability for the availability and accuracy of GPS.

Use with Care

Use of a TomTom device for navigation still means that you need to drive with due care and attention.

Aircraft and Hospitals

Use of devices with an antenna is prohibited on most aircraft, in many hospitals and in many other locations. A TomTom device must not be used in these environments.

SPECIAL NOTE REGARDING DRIVING IN CALIFORNIA AND MINNESOTA

California Vehicle Code Section 26708 (a) (1) provides that "No persons shall drive any motor vehicle with an object or material placed, displayed, installed, affixed or applied upon the windshield or side or rear windows." Drivers in California should not use a suction mount on their windshield, side or rear windows.

Note: this section of the California Vehicle Code applies to anyone driving in California, not just California residents.

Minnesota State Legislature Statutes Section 169.71, subdivision 1, section 2 provides that "A person shall not drive or operate with any objects suspended between the driver and the windshield other than sun visors and rearview mirrors and electronic toll collection devices."

Note: this Minnesota Statute applies to anyone driving in Minnesota, not just Minnesota residents.

TomTom Inc. bears no responsibility for any fines, penalties or damage that may be incurred by disregarding this notice. While driving in any state with windshield mounting restrictions, TomTom recommends the use of the supplied Adhesive Mounting Disk or its Alternative Mounting Kit, which includes multiple options for mounting TomTom devices on the dashboard and using the air vents. See www.tomtom.com for more information about this mounting option.

R&TTE directive

TomTom hereby declares that this personal navigation device is in compliance with the essential requirements and other relevant provisions of the EU Directive 1999/5/EC. The declaration of conformity can be found here: www.tomtom.com/legal.

TomTom car kit

Note: TomTom has designed the TomTom Car kit for iPhone specifically for iPhone use and has taken every precaution to make sure you have the best possible user experience. TomTom does not accept any responsibility for any damage to devices used with this accessory. Please review our exact warranty at: www.tomtom.com/legal.

WEEE directive



This symbol on the product or its packaging indicates that this product shall not be treated as household waste. In line with EU Directive 2002/96/EC for waste electrical and electronic equipment (WEEE), this electrical product must not be disposed of as unsorted municipal waste. Please

dispose of this product by returning it to the point of sale or to your local municipal collection point for recycling.

CE Marking



This equipment complies with the requirements for CE marking when used in a residential, commercial, vehicular or light industrial environment.

Addendum

FCC Information for the User



This product contains a transmitter which must not be co-located or simultaneously operated in conjunction with any other transmitter.

Radio and Television Interference

This equipment radiates radio frequency energy and if not used properly - that is, in strict accordance with the instructions in this manual - may cause interference to radio communications and television reception.

This device has been tested and found to comply with the limits for a Class B digital device, pursuant to Part 15 of the FCC Rules. These limits are designed to provide reasonable protection against harmful interference in a residential installation. This equipment generates, uses and can radiate radio frequency energy and, if not installed and used in accordance with the instructions, may cause harmful interference to radio communications. However, there is no guarantee that interference will not occur in a particular installation. If this equipment does cause harmful interference to radio or television reception, which can be determined by turning the equipment off and on, the user is encouraged to try to correct the interference by one or more of the following measures:

- Reorient or relocate the receiving antenna.
- Increase the separation distance between the equipment and the receiver.
- Connect the equipment into an outlet on a circuit different from that to which the receiver is connected.
- Consult an experienced radio/TV technician for help.

Changes or modifications not expressly approved by the party responsible for compliance could void the user's authority to operate the equipment.

Important

This equipment was tested for FCC compliance under conditions that included the use of shielded cables and connectors between it and the peripherals. It is important that you use shielded cables and connectors to reduce the

possibility of causing radio and television interference. Shielded cables suitable for the product range can be obtained from an authorised dealer. If the user modifies the equipment or its peripherals in any way, and these modifications are not approved by TomTom, the FCC may withdraw the user's right to operate the equipment. For customers in the USA, the following booklet prepared by the Federal Communications Commission may be of help: "How to Identify and Resolve Radio-TV Interference Problems". This booklet is available from the US Government Printing Office, Washington, DC 20402. Stock No 004-000-00345-4.

FCC Declaration of Conformity

Tested to comply with FCC Standards for Home or Office Use

This device complies with part 15 of the FCC Rules. Operation is subject to the following two conditions:

1. This device may not cause harmful interference.
2. This device must accept any interference received, including interference that may cause undesired operation.

Responsible party in North America

TomTom, Inc., 150 Baker Avenue Extension,
Concord, MA 01742

Tel: 866 486-6866 option 1 (1-866-4-TomTom)

Emissions information for Canada

Operation is subject to the following two conditions: (1) this device may not cause interference, and (2) this device must accept any interference, including interference that may cause undesired operation of the device.

This Category II radiocommunication device complies with Industry Canada Standard RSS-310.

Ce dispositif de radiocommunication de catégorie II respecte la norme CNR-310 d'Industrie Canada.

IMPORTANT NOTE:

Addendum

IC Radiation Exposure Statement:

This equipment complies with IC RSS-102 radiation exposure limits set forth for an uncontrolled environment.

This device and its antenna(s) must not be co-located or operating in conjunction with any other antenna or transmitter.

The County Code Selection feature is disabled for products marketed in the US/Canada.

C-tick



N14644
Z1230

This product displays the C-tick to show it complies with relevant Australian and New Zealand regulations.

Responsible party in Australia

TomTom Australia, Building 1, Suite 3, Level 3,
3 Richardson Place, North Ryde NSW 2113,
Australia

Tel: +612 8875 1700

Warning for Australia

The user needs to switch off the device when exposed to areas with potentially explosive atmospheres such as petrol stations, chemical storage depots and blasting operations.

This Document

Great care was taken in preparing this manual. Constant product development may mean that some information is not entirely up-to-date. The information in this document is subject to change without notice.

TomTom shall not be liable for technical or editorial errors or omissions contained herein; nor for incidental or consequential damages resulting from the performance or use of this material. This document contains information protected by copyright. No part of this document may be photocopied or reproduced in any form without prior written consent from TomTom International B.V.

Copyright notices

© 2009 TomTom N.V., The Netherlands. TomTom®, and the "two hands" logo, among others, are Trademarks owned by TomTom N.V. or one of its subsidiaries. Please see www.tomtom.com/legal for warranties and end user licence agreements applying to this product.

Compatible with all iPhone models

"Works with iPhone" means that an electronic accessory has been designed to connect specifically to iPhone and has been certified by the developer to meet Apple performance standards.

Apple is not responsible for the operation of this device or its compliance with safety and regulatory standards.

iPhone is a trademark of Apple Inc.

