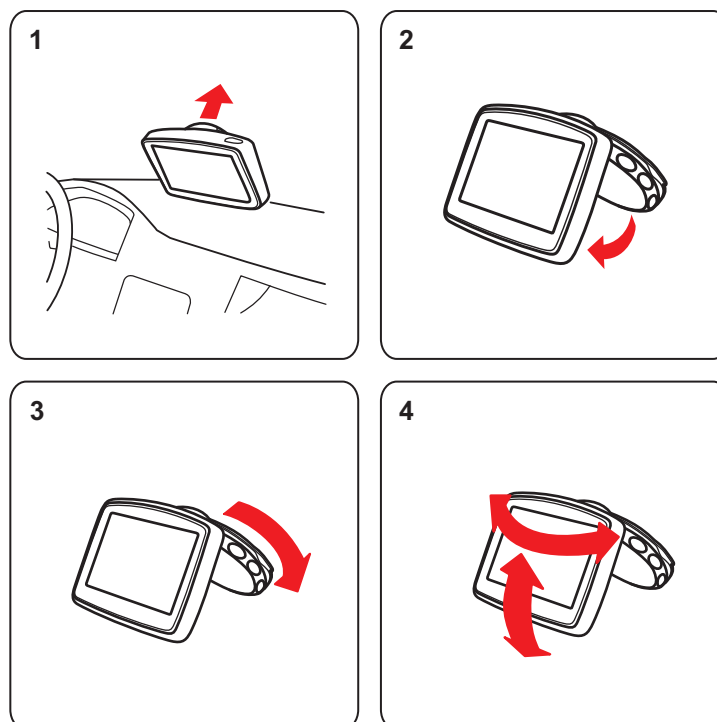
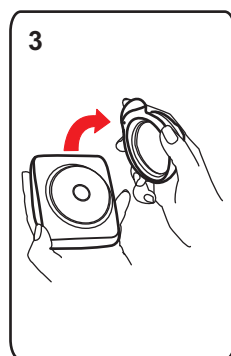
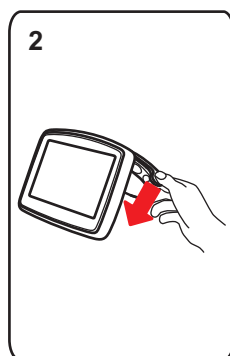
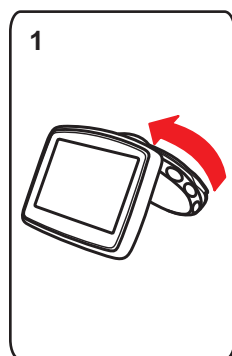
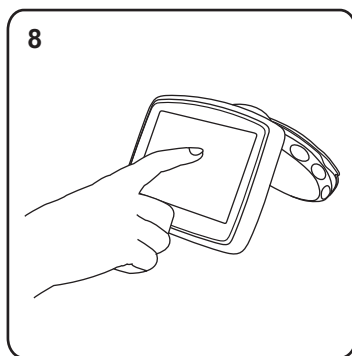
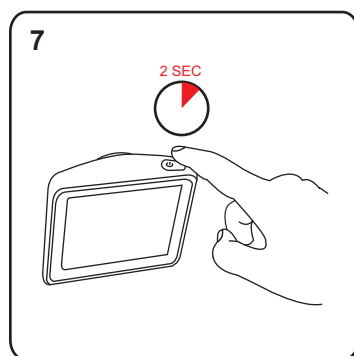
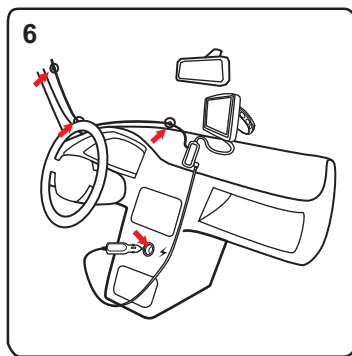
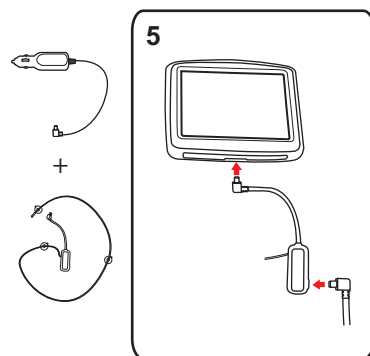
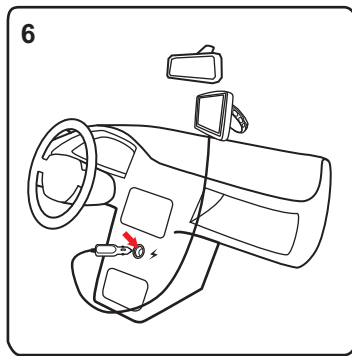
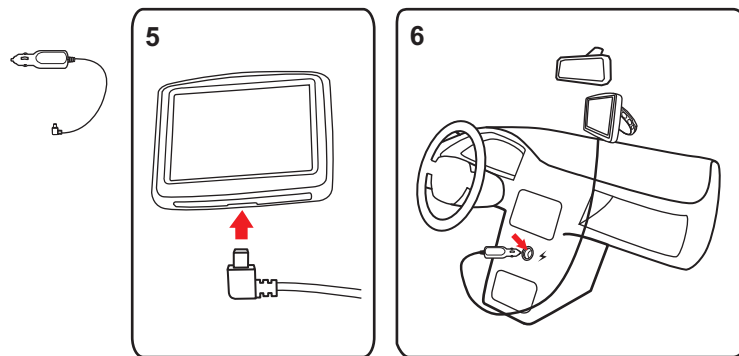
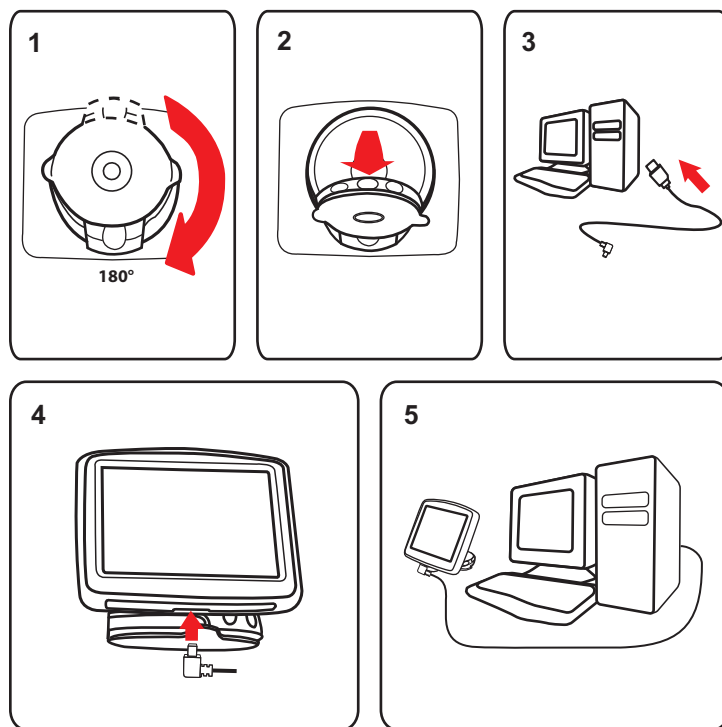

TomTom ONE/XL

1. Installation

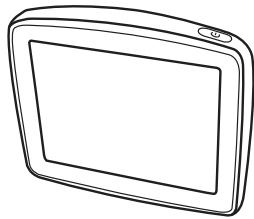






2. What's in the box

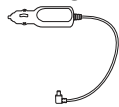
① Your TomTom ONE/XL



② EasyPort™ mount



③ Car charger



④ USB cable



⑤ Documentation pack



3. Before you start

Switching on and off

Install your TomTom ONE/XL navigation device in your car following the instructions in the installation section at the start of this book.

To switch on your navigation device, press and hold the On/Off button until you see the start-up screen. The first time you switch on your device, it may take a short time to start.

To set up your device you need to answer a few questions by tapping the screen.

Device not starting

In rare cases, your TomTom ONE/XL navigation device may not start correctly or may stop responding to your taps.

First, check that the battery is properly charged. To charge the battery, connect your device to the car charger. It can take up to 2 hours to fully charge the battery.

If this does not solve the problem, you can reset the device. To do this, press and hold the On/Off button for fifteen seconds and release the button when your device begins to restart.

Charging your TomTom ONE/XL

Before you use your ONE/XL for the first time, it's a good idea to charge it fully.

The battery in your TomTom ONE/XL navigation device charges when you connect it to the car charger or to your computer.

There is no charging light on your ONE/XL. To check the battery status and see when your ONE/XL is charging, switch on your device and tap the bottom right-hand corner of the screen in the Driving View. The battery status is shown on the next page.

When you connect your device to a computer, you are asked if you want to connect to the computer. If you select **No** and then do not tap the screen within three minutes, the device will automatically switch off. This happens so that the battery can charge faster.

Important: The USB cable should be plugged directly into a USB port on your computer and not into a USB hub or a USB port on a keyboard or monitor.

GPS reception

When you first start your TomTom ONE/XL navigation device, the device may need a few minutes to determine your GPS position and show your current position on the map. In future, your position will be found much faster, usually within a few seconds.

To ensure reception of a strong GPS signal, you should use your device outdoors. Large objects such as tall buildings can sometimes interfere with reception.

Take care of your device

Never leave your TomTom ONE/XL navigation device or accessories on view when you leave the car or they may become an easy target for thieves.

You can set a password for your device which must be entered every time you start it.

It is important to take care of your device.

- Your device is not designed for use in extreme temperatures and any such exposure may cause permanent damage.
- Do not open the casing of your device under any circumstances. Doing so may be dangerous and will invalidate the warranty.
- Wipe or dry the screen of your device using a soft cloth. Do not use any liquid cleaners.

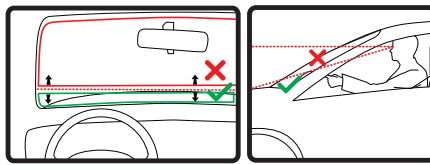
4. Safety

Positioning the dock

Consider carefully where to attach the dock in your car. The dock should not block or interfere in any way with the following:

- Your view of the road
- Any of the controls in your car
- Any of your mirrors
- The airbag

You should be able to reach your navigation device easily when it is in the dock without leaning or stretching. The diagrams show where you can safely attach the dock.



You can attach the dock to the windshield, side window or use a Dashboard Mount Disk to attach the dock to your dashboard. TomTom also offers alternative mounting solutions for your TomTom navigation device. For more information about Dashboard Mount Disks and alternative mounting solutions, go to www.tomtom.com/accessories.

Installing the dock

Make sure that both the holder and your window are clean and dry.

1. Press the suction cup firmly against the window on an area where the glass is flat.
2. Twist the base of the EasyPort holder in a clockwise direction to lock the holder in place.

For detailed instructions, check the installation section at the start of this manual.

Safety preferences



We recommend using the safety preferences to make your driving as safe as possible. The safety preferences include, for example, the following options:

- Hide most menu options when driving
- Show safety reminders
- Warn when driving faster than allowed

5. Making your first journey

Planning a route with your TomTom ONE/XL navigation device is easy. To plan a route, follow the steps below.

Important: For safety reasons, you should always plan a route before you start your journey.

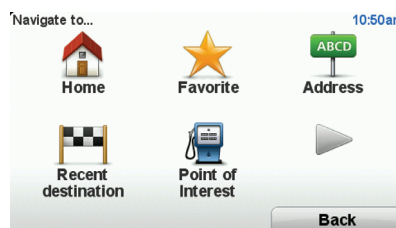
1. Tap the screen to bring up the Main Menu.

Note: The buttons on your navigation device are shown in full color unless a button is currently unavailable. For example, the button named **Find alternative** in the Main Menu is not available until you have planned a route.

2. Tap **Navigate to...**



3. Tap **Address**.

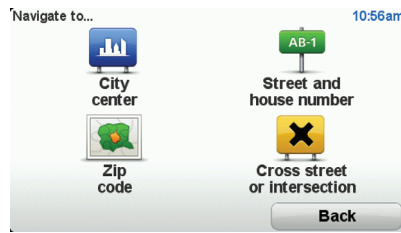


When you enter an address, you can choose from the following options:

- **City center** - tap this button to set your destination as the center of a city or town.
- **Street and house number** - tap this button to set an exact address as your destination.
- **Zip code** - tap this button to enter a zip code as your destination.
- **Cross street or intersection** - tap this button to set your destination as the point where two streets meet.

In this example, we will enter an exact address.

4. Tap **Street and house number**.



Note: When planning a trip for the first time your navigation device asks you to choose a state or country. Your choice is saved and used for all routes you plan.

You can change this setting at any time by tapping the flag.

5. Start to type the name of the town where you want to go.

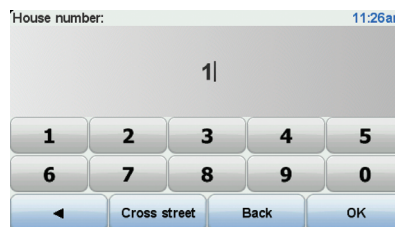


As you type, the names of the towns that match what you have typed are shown. When your destination appears in the list, tap the name of the town to set the destination.

6. Start to type the street name and tap on the street when it appears in the list.

As with the name of the town, the names of the streets that match what you have typed are shown. When your destination appears in the list, tap the name of the street to set the destination.

7. Enter the house number and then tap **Done**.



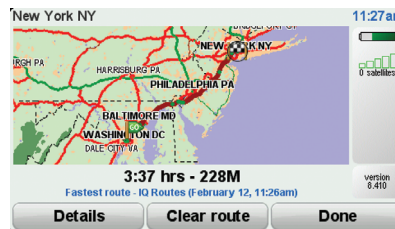
8. Your navigation device asks if you need to arrive at a particular time. For this exercise, tap **NO**.

The route is calculated by your device using IQ Routes™.

IQ Routes is used to plan the best possible route taking into account the real average speeds measured on the roads.

9. When the route has been calculated, tap **Done**.

Your TomTom ONE/XL navigation device will immediately begin to guide you to your destination, using both spoken instructions and on-screen directions.



Arrival times

When you plan a route, your TomTom ONE/XL asks you if you need to arrive at a particular time.

Tap **YES** to enter a preferred arrival time.

Your ONE/XL calculates your arrival time and shows you whether you will arrive on time.

You can also use this information to work out when you need to leave. If your ONE/XL shows that you will arrive 30 minutes early, you can wait and leave in 30 minutes time, rather than arrive early.

Your arrival time is constantly recalculated during your trip. The status bar shows whether you will arrive on time or if you are going to be late, as shown below:



You will arrive 55 minutes before the arrival time you entered.

If the estimated arrival time is more than five minutes before the time you entered, it is shown in green.



You will arrive 3 minutes before the arrival time you entered.

If the estimated arrival time is less than 5 minutes before the time you entered, it is shown in yellow.



You will arrive 19 minutes late.

If the estimated arrival time is later than the time you entered, it is shown in red.



Status bar preferences

Tap **Status bar preferences** in the Preferences menu, to enable or disable arrival time notifications.

Select the required options on the first menu screen and then tap **Done**.

To enable arrival time notifications, select **Show leeway to arrival time**.

Other navigation options

When you tap **Navigate to...**, you can set your destination in many ways, not just by entering the address. The other options are listed below:



Home

Tap this button to navigate to your Home location.

You will probably use this button more than any other.



Favorite

Tap this button to select a Favorite as your destination.



Address

Tap this button to enter an address as your destination.



**Recent
destination**

Tap this button to select your destination from a list of places you have recently used as destinations.



**Point of
Interest**

Tap this button to navigate to a Point of Interest (POI).



Point on map

Tap this button to select a point on the map as your destination using the map browser.



**Latitude
Longitude**

Tap this button to enter a destination using latitude and longitude values.



**Position of
last stop**

Tap this button to select your last recorded position, as your destination.

Planning a route in advance

You can use your ONE/XL to plan a route in advance, selecting your starting point and your destination.

Here are some more reasons to plan a route in advance:

- Find out how long a trip is going to take before you start.

You can also compare trip times for the same route at different times of the day or on different days of the week. Your TomTom ONE/XL uses IQ Routes when planning a route. IQ Routes calculates routes based on the real average speeds measured on roads.

- Study the route of a trip you are planning.
- Check a route for someone who is coming to visit you and then explain the route to them in detail.

To plan a route in advance, follow these steps:

1. Tap the screen to bring up the main menu.

2. Tap the arrow button to move to the next menu screen and tap **Prepare route**.



Prepare route

3. Select the starting point for your trip in the same way that you would select your destination.
4. Set the destination for your trip.
5. Choose the type of route that should be planned.
 - **Fastest route** - the route which takes the least time.
 - **Shortest route** - the shortest distance between the locations you set. This may not be the quickest route, especially if the shortest route is through a town or city.
 - **Avoid freeways** - a route which avoids freeways.
 - **Walking route** - a route designed for making the trip on foot.
 - **Bicycle route** - a route designed for making the trip on a bicycle.
 - **Limited speed** - a route for a vehicle which can only be driven at a limited speed. You have to specify the maximum speed.
6. Choose when you will make the trip you are planning. There are three options:
 - **Now**
 - **Specific date and time** - you will be asked to enter the date and time.
 - **No specific date and time**

If you select either **Now** or **Specific date and time**, your ONE/XL uses IQ Routes to work out the best possible route at that time, using the real average speeds measured on roads. In this way you can compare how long a trip takes at different times of day, or on different days of the week.

7. Your TomTom ONE/XL plans the route between the two locations you selected.

More information about a route

You can access these options for the route you last planned by tapping the **Details** button on the route summary screen.

You can then select from the following options:



Browse as text

Tap this button for a list of all the turn instructions on the route.

This is very useful if you need to explain a route to someone else.



Browse as images

Tap this button to see each turn in the trip. Tap the right and left arrows to move forwards and backwards through the trip.

Tap the screen to turn off the 3D display and view the map from above.



Browse map of route

Tap this button to see an overview of the route using the map browser.



**Show route
demo**

Tap this button to watch a demo of the trip. You can interrupt the demo at any time by tapping the screen.



**Show route
summary**

Tap this button to open the route summary screen.



View route

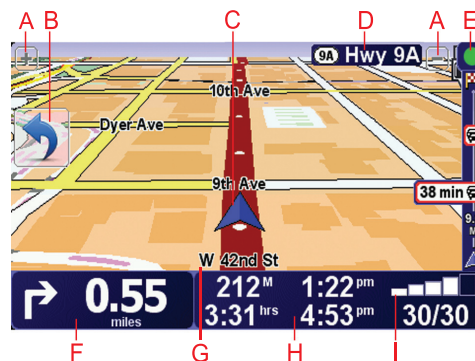
Tap this button to see your route.

6. Driving View

When your TomTom ONE/XL starts, you are shown the Driving View along with detailed information about your current location.

Tap the center of the screen at any time to open the Main Menu.

Note: The Driving View is shown in black and white until your ONE/XL locates your current position.



- Ⓐ Tap + and - to zoom in and out.
- Ⓑ Quick menu - switch this on in the Preferences menu.
- Ⓒ Your current position.
- Ⓓ The name of the next major road or road sign information, if applicable.
- Ⓔ Traffic bar - requires an RDS-TMC Traffic Receiver (available as an accessory).
- Ⓕ Navigation instruction for the road ahead.

Tap this area to repeat the last spoken instruction and to change the volume.
- Ⓖ The name of the street you are on.
- Ⓗ Information about your trip such as trip time, remaining distance and arrival time.

To change the information shown, tap **Status bar preferences** in the **Preferences** menu.
- Ⓘ GPS signal strength.

7. Advanced Lane Guidance

Advanced Lane Guidance

Your TomTom ONE/XL helps you prepare for highway exits and intersections by showing you which lane you should be in.

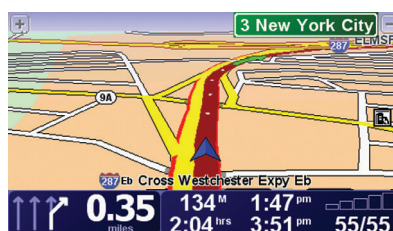
Note: *This information is not available for all intersections or in all countries.*

For some exits and junctions, an image shows the turn and the lane you should take.



To turn the images off, tap **Hide lane images** in the Preferences menu.

For other exits and intersections, your ONE/XL shows the lane you should take in the Status bar. To turn this guidance off, tap **Change preferences** in the Main Menu, then tap **Status bar preferences**. Clear the checkbox for **Show lane guidance**.



8. Finding alternative routes

Once you have planned a route, you may want to change something about the route, without changing your destination.

Why change the route?

Maybe for one of these reasons:

- You can see a roadblock or a line of traffic ahead.
- You want to travel via a particular location, to pick someone up, stop for lunch or fill up with gas.
- You want to avoid a difficult intersection or a road you don't like.



Find alternative...

Tap **Find alternative...** in the Main Menu to change the route that is currently planned.

The **Find alternative...** button is also shown in the route summary screen after you plan a route.



Calculate alternative

Tap this button to calculate an alternative to the route already planned.

Your ONE/XL will look for another route from your current location to your destination.

If you decide you would prefer to use the original route after all, tap **Recalculate original**.

Why would I need to do this?

Apart from the roads near your position and near your destination, the new route will use totally different roads to reach your destination. This is an easy way of calculating a totally different route.



Avoid roadblock

Tap this button if you can see a roadblock or a line of traffic ahead. You then have to choose how much of the route ahead you want to avoid.

Choose from the different options: 100m, 500m, 2000m, 5000m. Your ONE/XL will recalculate your route avoiding the section of the route for the distance you selected.

Don't forget that once a new route is calculated, you may have to turn off the road you are on very soon.

If the roadblock suddenly clears, tap **Recalculate original** to return to your original route.



Travel via...

Tap this button to change your route so that it passes a particular location, perhaps to pick someone up on the way. When you do this, a marker is shown on the map for the location you choose the travel over.

You choose the location you want to pass in the same way as you choose a destination. So you can select from all the same options: for example, **Address, Favorite, Point of Interest** and **Point on map**.

Your ONE/XL will calculate a new route to your destination that passes the location you chose. Unlike your final destination, your ONE/XL does not inform you when you pass by this location.

Using this button, you can only travel via one location. If you want to pass more than one, use an Itinerary.



Recalculate original

Tap this button to return to the original route without deviations to avoid roadblocks or traveling via particular locations.



Avoid part of route

Tap this button to avoid a part of the route. Use this button if you see that your route includes a road or junction you don't like, or which is well-known for traffic problems.

You then choose the road you want to avoid from a list of the roads on your route.

9. Browse map

To look at the map in the same way as you might look at a traditional paper map, tap **Browse map** in the Main Menu.

You can move the map by touching the screen and moving your finger across the screen.



Ⓐ The scale bar

Ⓑ GPS button

Tap this button to center the map on your current position.

Ⓒ Options

Ⓓ The cursor

Ⓔ The Find button

Tap this button to find specific addresses.

Ⓕ The Cursor button

Tap this button to navigate to the cursor position, make a Favorite of the cursor position, or find a Point of Interest near the cursor position.

Ⓖ The zoom bar

Zoom in and out by moving the slider.

Options

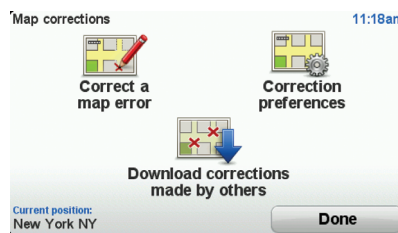
Tap the **Options** button to set the information shown on the map. You can choose to show the following information:

- **Points of interest.** Tap **POI** below the list of options to select which POIs are shown.
- **Favorites**
- **Traffic**
- **Images**

- **Names**
- **Coordinates**

10. TomTom Map Share™

With TomTom Map Share, you can correct errors on your map and share those corrections with other people in the TomTom Map Share community as well as receive corrections made by others.



If you find a street that has recently been blocked to traffic but was open before, you can use Map Share to correct your map and then share the correction with other Map Share members.

You can use Map Share to send and receive map corrections during the first year after the map's release date. This means that one year after the release date, you will no longer be able to send or receive map corrections for that version of the map - You will still be able to make corrections to your own map for use on your own device.

You choose the type of corrections you want and each time you connect your TomTom ONE/XL to TomTom HOME, the map will be updated automatically.

Note: *TomTom Map Share is not available in all regions. For more information, go to tomtom.com/mapshare*

Map corrections

There are two types of map corrections:

- Corrections that are immediately shown on the map. These include, changing the traffic flow of a street, blocking or renaming a street and adding or editing POIs.

This type of change is immediately shown on your own map. You can hide these corrections at any time in the Map Share preferences menu.

- Corrections that are reported to TomTom but not shown immediately on your map. These include, missing streets, errors in freeway entrances and exits and missing rotaries.

This type of correction is investigated by TomTom and once verified, is included in the next map release. These corrections are therefore not shared with the Map Share community.

Tip: If you cannot see the **Map corrections** button in the Main Menu, tap **Show ALL menu options** in the Preferences menu.

Making a map correction

Important: For safety reasons, you should only mark a location when you are driving. Do not enter the full details of an error while you are driving.



Correct a map error

1. Tap **Map corrections** in the Main Menu.
2. Tap **Correct a map error**.
A list of possible map corrections is shown.
3. Select the type of correction you want to report.

Note: If you tap **Add missing POI** or **Report other error** you will be asked for some additional information before the next step.

4. Select the method you want to use for selecting the location of the correction.
5. When you have found the location, tap **Done**.
6. Enter correction or confirmation of correction now.

Receiving the latest map updates

When you connect your TomTom ONE/XL to your computer, TomTom HOME automatically downloads any available map corrections and sends any changes you have made, to the Map Share community.

There are several types of corrections which can be set in the Correction preferences menu.

Marking a map error while on the move

Important: For safety reasons, you should only mark a location when you are driving. Do not enter the full details of an error while you are driving.

If you notice an item on your map that needs attention, you can mark the location using the **Report** button and then enter the details when you are no longer driving.

To show the **Report** button in the Driving View or in the quick menu, do the following:

1. Tap **Map corrections** in the Main Menu.

Tip: If you cannot see the **Map corrections** button in the Main Menu, tap **Show ALL menu options** in the Preferences menu.

2. Tap **Correction preferences**.
3. Tap **Done** and then tap **Done** again.
4. Select **Show report button**, then tap **Done**.

The **Report** button is shown on the left-hand side of the Driving View. After you mark a location, you can add more information about the change when you open the **Map corrections** menu.

For example, you are driving to a friend's house and you notice that the name of the street you are on is different from the one on your map. To report the change, tap the **Report** button and your ONE/XL will save your current location. You can then send the correction to TomTom Map Share when you have finished your trip.

TomTom Map Share community

To join the Map Share community, do the following:

1. Tap **Map corrections** in the Main Menu.

Tip: If you cannot see the **Map corrections** button in the Main Menu, tap **Show ALL menu options** in the Preferences menu.

2. Tap **Download corrections made by others**.

3. Tap **Join**.

When you connect your ONE/XL to your computer, TomTom HOME downloads new corrections and sends your corrections to the Map Share community.

Important: TomTom Map Share corrections are not sent to your navigation device using a wireless connection. You should regularly connect your device to your computer and use TomTom HOME to check for new updates.

Correction preferences

The correction preferences set the way TomTom Map Share works on your device.

You can set the following preferences:

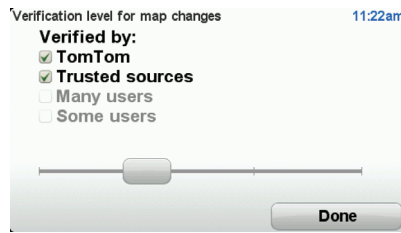
- Use the trust level slider to choose the types of corrections from the Map Share community you want to use on your maps.
- Decide if you want to share your corrections with others.
- Show or hide the report button in the Driving View.

To set your preferences, select **Map corrections** in the Main Menu.

Tip: If you later decide you want to remove corrections from the map, clear the checkbox next to the types of corrections you want to remove. If you clear all the checkboxes, your map returns to the original state before the first correction.

Trust slider

Use the Trust level slider to set the type of map corrections you want added to your map. To do this, tap **Correction preferences** in the Map corrections menu.



There are four levels of trust that you can choose. The level changes when you move the slider:

- **TomTom** - only accept changes made by TomTom.
- **Trusted sources** - accept changes made by TomTom and by trusted users who have been verified by TomTom.
- **Many users** - accept changes made by TomTom, by trusted users who have been verified by TomTom and changes made by a high number of Map Share community members.
- **Some users** - accept changes made by TomTom, by trusted users who have been verified by TomTom and all changes that have been made by Map Share community members.

Types of map correction

There are several types of correction that you can make to a map.

To make a correction to your map, tap **Map corrections** in the Main Menu then tap **Correct a map error**. The following types of corrections are shown.



Tap this button to block or unblock a street. You can block or unblock the street in one or both directions.

For example, to correct a street near to your current location, do the following:

1. Tap **(Un)block street**.
2. Tap **Near you** to select a street near your current location. You can select a street by name, a street near your Home location or a street on the map.
3. Select the street or section of a street you want to correct by tapping it on the map.

The street you select is highlighted and the cursor shows the name of the street.

4. Tap **Done**.

Your device shows the street and whether the traffic is blocked or allowed in each direction.



5. Tap one of the direction buttons to block or unblock the flow of traffic in that direction.
6. Tap **Done**.

The next time you connect your device to TomTom HOME, your corrections are shared with the TomTom Map Share community.



Tap this button to correct the traffic direction of a one-way street, where the direction of traffic is different to the direction shown on your map.

Note: Reverse traffic direction only works for one-way streets. If you select a two-way street you will be given the chance to block/unblock the street rather than changing the direction.



Edit street name

Tap this button to change the name of a street on your map.

For example, to rename a street near to your current location:

1. Tap **Edit street name**.
2. Tap **Near you**.
3. Select the street or section of a street you want to correct by tapping it on the map.

The street you select is highlighted and the cursor shows the name of the street.

4. Tap **Done**.
 5. Type the correct street name.
 6. Tap **Done**.
-



Change turn restrictions

Tap this button to change and report incorrect road turn directions.



Change road speed

Tap this button to change and report road speed limit.



Add missing POI

Tap this button to add a new Point of Interest (POI).

For example to add a new restaurant near to your current location:

1. Tap **Add missing POI**.
2. Tap **Restaurant** in the list of POI categories.
3. Tap **Near you**.
4. Select the location of the missing restaurant.

You can select the location by entering the address or by selecting the location on the map. Select **Near you** or **Near home** to open the map at your current location or at your Home location.

5. Tap **Done**.
6. Type the name of the restaurant then tap **OK**.
7. If you know the telephone number of the restaurant you can type it, then tap **OK**.

If you don't know the number, just tap **OK** without typing a number.



Edit POI

Tap this button to edit an existing POI.

You can use this button to make the following changes to a POI:

- Delete the POI.
- Rename the POI.
- Change the telephone number of the POI.
- Change the category that a POI belongs to.
- Move the POI on the map.



Report other error

Tap this button to report other types of corrections.

These corrections are not immediately applied to your map. Your TomTom ONE/XL sends a special report to TomTom Map Share.

You can report missing streets, errors in motorway entrances and exits and missing roundabouts. If the correction you want to report is not covered by any of these report types, enter a general description then tap Other.

11. Sounds and voices

Your TomTom ONE/XL plays the following kinds of sounds:

- Spoken instructions
- Warnings

Changing the volume level

You can change the volume in three ways:

- Tap the bottom left hand area of the Driving View. The last spoken instruction is repeated and the volume level is shown.

Move the volume slider to adjust the volume.

- In the Main Menu, tap **Change preferences**, then tap **Volume preferences**.

Tap **Test** to check your changes.

Selecting a voice



**Voice
preferences**

To change the voice being used by your TomTom ONE/XL, tap **Voice preferences** in the Preferences menu, then tap **Change voice**. Select a voice from the list.

12. Preferences

You can change the way your TomTom ONE/XL looks and behaves.

Tap **Change preferences** in the Main Menu.

Hidden buttons and features

When you first start using your TomTom ONE/XL, all the buttons are shown in the menu.

The buttons for the more advanced features can be hidden. This is a useful option because you are unlikely to use certain features very often.



Show fewer menu options

Tap this button in the Preferences menu, to reduce the number of buttons that are shown.

You might want to do this so that only frequently used buttons are shown.

When you need to use the buttons that are hidden, you can press **Show ALL menu options** in the Preferences menu to show all buttons.



Show ALL menu options

Tap this button in the Preferences menu, to show all the buttons available on your TomTom ONE/XL.

Use night colors / Use day colors



Use night colors

Tap this button to reduce the brightness of the screen and show darker colors on the map.

When should I use this?

When it's dark, it is easier to see the screen if the display on your ONE/XL is not brightly lit.



Use day colors

To change back to a brighter screen showing brighter colors on the map, tap **Use day colors**.

Show POI on map



Show POI on map

Tap this button to set which categories for the Points of Interest (POIs) should be shown on the map:

1. Tap **Show POIs on map** in the Preferences menu.
2. Select the POI categories to display on the map.

Tap **Find** to search for a POI category.

3. Tap **Done**.

The POIs you have selected are shown as symbols on the map.

Safety preferences



Safety preferences

Tap this button to set the following safety preferences:

- **Hide most menu options while driving**
- **Suggest driving breaks**
- **Show safety reminders**
- **Warn when near places of worship or schools**
- **Warn when driving faster than allowed**
- **Warn when driving faster than a set speed**
- **Warn not to leave the device in the car**

If you select one or more of the warnings, you will also be asked to select a sound to be played whenever a warning is displayed.

Select whether or not your TomTom ONE/XL should warn you about which side of the road you should be driving on.

Decide if you want the map display to be turned off in special circumstances and press **Done**.

What happens when I use the Turn off map display option?

When you turn off the map display, instead of seeing your position on a map in the Driving View, you will only see information about the next instruction.

Tap the button and select an option for when the map should be turned off. These are the options:

- **Always** - The map will not be shown and you will only see information about the next instruction and arrows showing direction.
- **Above a certain speed** - you set the speed at which point the map will be turned off. This option is useful for situations when the map might be distracting, such as when you are driving fast.
- **Never** - the map is never turned off.

Guided tours

This button may only be available if all menu options are shown. To show all menu options, tap **Show ALL menu options** in the Preferences menu.



Guided tours

Tap this button to show one of the Guided tours on how to use your TomTom ONE/XL.

Turn off sound / Turn on sound



Turn off sound

Tap this button to turn off sound. If you turn off the sound, warnings for upcoming POIs are also turned off.

The button changes to **Turn on sound**.

Tips

To change the volume, tap **Volume preferences** in the Preferences menu.

To change the volume quickly while you are driving, tap the bottom left-hand section of the Driving View and move the slider.

To change the voice being used by your ONE/XL, tap **Change voice** in the Voice preferences menu.

Volume preferences



Volume preferences

Tap this button to change the volume.

Manage Favorites



Manage Favorites

Tap this button to rename or delete Favorites.

To find a Favorite quickly, tap **Find**, then start to type the name of the Favorite. As soon as the Favorite is shown in the list, you can select it.

Change Home location



Change Home location

Tap this button to set or change your Home location.

Do I need to use my actual home address for the Home location?

No. Your Home location can be a place you go often, for example, your office. It can be your actual home address, but it can also be any address you like.

Why should I set a Home location?

Having a Home location means that you have a quick and easy way to navigate there, by tapping the Home button in the **Navigate to...** menu

Change voice



Change voice

Tap this button to change the voice which gives you instructions.

Manage POIs

This button may only be available if all menu options are shown. To show all menu options, tap **Show ALL menu options** in the Preferences menu.



Manage POIs

Tap this button to do the following:

- Set alerts for when you are near POIs.

For example, your ONE/XL can tell you when there is a gas station nearby.

- Create your own POI categories and add POIs to them.

For example, you could create a category of POIs called "Friends", and add all your friends' addresses as POIs in the category. You can even add your friends' phone numbers with their address so you can call them from your ONE/XL.

The following buttons are available:

- **Add POI** - tap this button to add a location to a POI category you have created.
- **Warn when near POI** - tap this button to be warned when you approach a POI. You can select the types of POI for which you wish to be warned.
- **Delete POI** - tap this button to delete a POI you created.
- **Edit POI** - tap this button to edit the details of a POI you created.
- **Add POI category** - tap this button to create a new POI category.
- **Delete POI category** - tap this button to delete a POI category you created.

Change car symbol

This button may only be available if all menu options are shown. To show all menu options, tap **Show ALL menu options** in the Preferences menu.



Change car symbol

Tap this button to select a car symbol that will be used to show your current position in the Driving view.

Additional car symbols can be downloaded using TomTom HOME.

Change 2D/3D display / Turn on 2D display



Turn on 2D display

Tap **Turn on 2D display** to change the perspective for viewing the map.

For example, the 2D view shows a two dimensional view of the map as though viewed from above.



Change 2D/3D display

To switch the view to a three dimensional perspective, tap **Change 2D/3D display** and select a view from the list.

When should I use this?

In some situations, it is easier to see the map from above. Perhaps if the road network is complicated or for times when you are walking while using your ONE/XL to navigate.

Show/Hide lane images

This button may only be available if all menu options are shown. To show all menu options, tap **Show ALL menu options** in the Preferences menu.



Show lane images

Tap this button to show or hide the arrows that warn you which lane you need to be in to navigate an approaching road exit or intersection.

Manage maps

This button may only be available if all menu options are shown. To show all menu options, tap **Show ALL menu options** in the Preferences menu.



Manage maps

Tap this button to do the following:

- **Download a map** - tap this button to download a map you have bought using TomTom HOME. It may not be possible to download maps on all devices.
- **Switch map** - tap this button to change the map you are using.
- **Download free map corrections** - tap this button to download map corrections provided as part of the Map Share service.

Use TomTom HOME to make backups, download, add and delete maps from your navigation device.

Change map colors

This button may only be available if all menu options are shown. To show all menu options, tap **Show ALL menu options** in the Preferences menu.



Change map colors

Tap this button to select the color schemes for day and night map colors.

You can also download more color schemes from TomTom Services.

Change language



Change language

Tap this button to change the language used for all the buttons and messages you see on your ONE/XL.

You can choose from a wide range of languages. When you change the language, you are also given the opportunity to change the voice.

Status bar preferences

This button may only be available if all menu options are shown. To show all menu options, tap **Show ALL menu options** in the Preferences menu.



Status bar preferences

Tap this button to select the information shown on the status bar:

- **How should the status bar be displayed?**

Horizontal - If you choose this option, the status bar will be shown at the bottom of the Driving view.

Vertical - If you choose this option, the status bar will be shown at the right-hand side of the Driving view.

- **Remaining time** - the estimated time left until you reach your destination.
- **Remaining distance** - the distance left until you reach your destination.
- **Current time**
- **Arrival time** - your estimated arrival time.
- **Speed**
- **Direction**
- **Show lane guidance**
- **Show current street name**
- **Show leeway to arrival time** - your ONE/XL shows how late or early you will be compared with the preferred arrival time that is set during the planning of a route.
- **Show max speed next to speed** - only available when speed (above) is also selected.

Note: If the speed limit for the road you are on is available, it is shown next to your speed.

If you drive faster than the speed limit, your speed is shown in red.

Quick menu preferences

This button may only be available if all menu options are shown. To show all menu options, tap **Show ALL menu options** in the Preferences menu.



Quick menu preferences

Tap this button to choose up to six buttons to be used in the Quick menu.

The Quick menu button enables easy access for your most commonly used buttons.

The buttons you assign for use with the Quick menu, are shown in the Driving View.

Street name preferences

This button may only be available if all menu options are shown. To show all menu options, tap **Show ALL menu options** in the Preferences menu.



Tap this button to set the information that is shown on the map in the Driving View. The following options are available:

- **Show house number before street name**
- **Show street names** - if you are using a computer voice for spoken instructions and have selected that street names should be read aloud, you do not need to select this option, since the street names will be read aloud even though this option is not selected.
- **Show next street name**
- **Show current street name on map**
- **Show next freeway / signpost** - if available, the road sign to follow or the name of the next major road on your route is shown at the top of the screen in the Driving View.

Planning preferences

This button may only be available if all menu options are shown. To show all menu options, tap **Show ALL menu options** in the Preferences menu.



Tap this button to set the kind of route planned when you select a destination.

The following options are available:

- **Ask me every time I plan**
- **Always plan fastest routes**
- **Always plan shortest routes**
- **Always avoid freeways**
- **Always plan walking routes**
- **Always plan bicycle routes**
- **Always plan for limited speed**

Tap the **IQ Routes** button to enable or disable IQ Routes.

IQ Routes is used to plan the best possible route - taking into account the real average speeds measured on the roads.

Then set how your ONE/XL should handle the following when planning a route:

- Toll roads on the route
- Ferry crossings on the route
- HOV lanes on the route
- Unpaved roads

You can then set if the route summary screen closes automatically after you have planned a route. If you select **No**, you have to tap **Done** to close the route summary screen.

Replanning preferences

Select whether or not you want your TomTom ONE/XL to replan your route when a faster route is found while you drive. This might occur due to changes in the traffic situation.

Brightness preferences

This button may only be available if all menu options are shown. To show all menu options, tap **Show ALL menu options** in the Preferences menu.



Brightness preferences

Tap this button to set the brightness of the screen.

Move the sliders to set the brightness separately for day map colors and for night map colors.

You can also set this option:

- **Switch to night view when dark** - your ONE/XL uses night colors for the Driving View based on the time of day.

You can set the map color scheme by tapping **Change map colors**.

Set owner

This button may only be available if all menu options are shown. To show all menu options, tap **Show ALL menu options** in the Preferences menu.



Set owner

Tap this button to enter your name and address as the owner of your ONE/XL and to change or delete a 4-digit password for your ONE/XL.

Note: You can only change or delete a 4-digit password on your TomTom ONE/XL.

You can create a 4-digit password for your ONE/XL using TomTom HOME:

1. Connect your ONE/XL to your computer and turn on your ONE/XL and your computer.

TomTom HOME starts automatically.

2. Click on **Operate my ONE/XL** in TomTom HOME.

Your ONE/XL appears and can be controlled using TomTom HOME.

3. From the Main Menu, click **Change preferences**.

4. Click **Set Owner**. You can now set a 4-digit password for your ONE/XL.

You can only create a 4-digit password using TomTom HOME.

Set units

This button may only be available if all menu options are shown. To show all menu options, tap **Show ALL menu options** in the Preferences menu.



Set units

Tap this button to set the type of units that will be shown for the following:

- Distance
- Time
- Latitude and longitude
- Temperature
- Air pressure

Operate left-handed / Operate right-handed

This button may only be available if all menu options are shown. To show all menu options, tap **Show ALL menu options** in the Preferences menu.



Operate left-handed

Tap this button to move important buttons, for example, the **Done** and **Cancel** buttons as well as the zoom bar, to the left hand side of the screen. This makes it easier to tap the buttons with your left hand without blocking the screen.

To move the buttons back to the right hand side of the screen, tap **Operate right-handed**.

Keyboard preferences



Keyboard preferences

You use the keyboard to enter your destination or to find an item in a list, such as a POI.

Tap this button to select the size of the keys on the keyboard and the keyboard layout. You can select from two sizes:

- **Large keyboard**
- **Small keyboard**

Three keyboard layouts are available:

- **ABCD keyboard**
- **QWERTY keyboard**
- **AZERTY keyboard**

Set clock



Set clock

Tap this button to select the type of clock that is shown and set the time.

The easiest way to set the time is by tapping the **Sync** button. Your ONE/XL will then take the time from GPS information.

Note: After using **Sync** to set the time, you may have to adjust the hours depending on your time zone. Your ONE/XL works out your time zone and always keeps the time correct using GPS information.

You can only use **Sync** if you have GPS reception, so you cannot set the clock in this way when you are indoors.

Battery saving preferences



Battery saving preferences

This button may only be available if all menu options are shown. To show all menu options, tap **Show ALL menu options** in the Preferences menu.

Tap this button to configure your ONE/XL to conserve power when possible. The following options are available:

- **Never turn off screen**
- **Turn off screen between instructions**
- **Always turn off screen**

Then select whether or not you want to **Switch off when external power is lost**.

Reset factory settings



Reset factory settings

Tap this button to restore the factory settings to your TomTom ONE/XL.

All your settings, including Favorites, your Home location, warnings for POIs and any Itineraries you have created are deleted.

13. Points of Interest

Points of Interest or POIs are useful places on the map. Here are some examples:

- Restaurants
- Hotels
- Museums
- Parking garages
- Gas stations

Note: You can report missing POIs or edit existing POIs using Map Share and share your corrections with the Map Share community.

Creating POIs

1. Tap the screen to bring up the main menu.
2. Tap **Change preferences**.
3. Tap **Manage POIs**.

This button may only be available if all menu options are shown. To show all menu options, tap **Show ALL menu options** in the Preferences menu.

4. Before you can add a POI, you have to create at least one POI category. Every POI is assigned to a POI category. You can only add POIs to POI categories you have created yourself.



Add POI category

Tap **Add POI category**.

5. Enter a name for your POI category, for example, 'Friends' or 'Favorite restaurants'. Then select a marker for your POI category.
6. Tap **Add POI**.












Add POI

Tap this button to add a POI.

7. You are asked to name the POI.

8. Select the POI category in which you want to add the POI.
9. Select the location of your POI from the list below.

 Home	<p>You can set your Home location as a POI.</p> <p>If you want to change your Home location, you can create a POI of the Home location before you change it.</p>
 Favorite	<p>You can create a POI from a Favorite.</p> <p>You can only create a limited number of Favorites. If you want to create more Favorites you have to delete some Favorites first. Before you delete a Favorite, make it into a POI so that you don't lose the address.</p>
 Address	<p>You can specify an address to be a POI. When you enter an address, you can choose from four options.</p> <ul style="list-style-type: none">• City center• Street and house number• Zip code• Crossing or intersection
 Recent destination	<p>Select a POI location from a list of places you have recently used as destinations.</p>
 Point of Interest	<p>You can add a Point of Interest (POI) as a POI. For example, if you are creating a category of POIs for your favorite restaurants, use this option instead of entering the addresses of the restaurants.</p>
 My location	<p>Tap this button to add your current position as a POI.</p> <p>For example, if you stop somewhere you like, while you are there you can tap this button to create the POI.</p>
 Point on map	<p>Tap this button to create a POI using the map browser.</p> <p>Select the location of the POI using the cursor, then tap Done.</p>
 Latitude Longitude	<p>Tap this button to create a POI by entering latitude and longitude values.</p>
 Position of last stop	<p>Tap this button to select your last recorded position as your destination.</p> <p>This may be useful if your ONE/XL is unable to maintain a strong GPS signal, for example, when you drive through a long tunnel.</p>

Note: You can report missing POIs or edit existing POIs using Map Share and share your corrections with the Map Share community.

Navigating to a POI

You can use a POI as your destination. For example, if you are traveling to an unfamiliar city, you could choose a POI to help find a parking garage.

1. Tap the screen to bring up the main menu.
2. Tap **Navigate to...** in the Main Menu.
3. Tap **Point of Interest**.
4. Tap **POI in city**.
5. Narrow your choice of POIs by selecting the area where the POI is located.

You can select one of these options:

- **POI near you** - to choose from a list of POIs near to your current location.
- **POI in city** - to find a POI in a particular town or city.
- **POI near Home** - to choose from a list of POIs near to your Home location.

You can select from a list of POIs which are along your route or close to your destination. Choose from one of these options:

- **POI along route**
- **POI near destination**

Note: The last POI you viewed is also shown so that you can plan a route there more quickly.

6. Type the name of the town you want to visit and select the town when it appears in the list.
7. Select the category of POI:

Tap **Any POI category** to search for a POI by category name.

Tap the category of POI, if it is shown.

Tap the arrow to choose from the complete list of categories. Select the category from the list or start to type the name of the category and select it when it appears in the list.

8. Tap **Parking garage**.
9. From the list of POIs shown, select the POI you want to navigate to.

The table below explains the distances listed next to each POI.

POI near you	Distance from your current location
POI in city	Distance from the city center
POI near Home	Distance from your Home location
POI along route	Distance from your current location

POI near destination Distance from your destination

If you know the name of the POI, tap **Find** and type the name. Select it from the list when it is shown.

The next screen shows more detailed information including the location of the POI on the map and the phone number of the POI, if available.

Tap **Select** to confirm you want to plan a route to this POI.

Once you have selected a POI, the route to the POI is calculated by your TomTom ONE/XL.

Showing POIs on the map

1. Tap **Show POIs on map** in the Preferences menu.



Show POI on map

2. Select the POI categories to display on the map.

Tap **Find** to search for a POI by name.

3. Tap **Done**.

The POIs you have selected are shown as symbols on the map.

How can I set warnings for POIs?

1. Tap the screen to bring up the main menu.
2. Tap **Change preferences**.
3. Tap **Manage POIs**.

Note: The **Manage POIs** button is only available when all menu buttons are shown. To show all menu buttons, tap **Show ALL menu options** in the Preferences menu.

4. Tap **Warn when near POI**.



Warn when near POI

Tap this button to receive a warning when you travel near to the location of a POI.

5. Select the category of POI you want to be warned about.

Select the category from the list or start to type the name of the category and select it when it is shown in the list.

6. Set how close the POI should be when you receive a warning.
7. Choose the warning sound for the category of POI you selected.

Managing POIs



Manage POIs

Tap **Manage POIs** from the Preferences menu.

Note: The **Manage POIs** button is only available when all menu buttons are shown. To show all menu buttons, tap **Show ALL menu options** in the Preferences menu.

You can, for example, do the following:

- Create your own POI categories and add POIs to them.
- Set warnings when you get close to POIs.

Why would I want to create my own POIs?

A POI acts like a shortcut - once you have saved a location as a POI you never have to type the address of that POI again. But when you create a POI you can save more than just the location.

- Phone number - when you create a POI, you can save a phone number with it.
- Categories - when you create a POI you have to put it in a category.

For example, you could create a category of POIs called 'Favorite restaurants'. With each POI, save their phone number so that you can call them to reserve a table.

Note: You can report missing POIs or edit existing POIs using Map Share and share your corrections with the Map Share community.

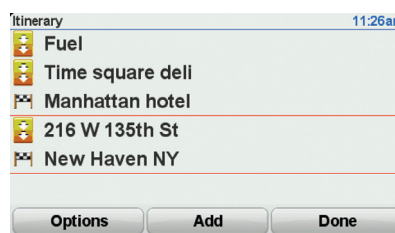
14. Itinerary Planning

What is an Itinerary?

An Itinerary is a plan for a trip including more locations than your final destination.

An Itinerary can include the following items:

- Destination - a location on your trip where you want to stop.
- Waypoint - a location on your trip you want to travel through without stopping.



Destinations are shown using this symbol.



Waypoints are shown using this symbol.

When would I use an Itinerary?

You could use an Itinerary for trips such as:

- A road trip through a country with lots of stops.
- A two day car trip with an overnight stop.
- A short drive which passes by Points of Interest.

In all these examples you could tap **Navigate to...** for each place. However, if you use an Itinerary, you can save time by planning everything in advance.

Creating an Itinerary

1. Tap the screen to bring up the main menu.
2. Tap **Itinerary planning**.



Itinerary planning

The Itinerary planning screen opens. At first, there are no items on the Itinerary.

Note: This button may only be available if all menu options are shown. To show all menu options, tap **Show ALL menu options** in the Preferences menu.

3. Tap **Add** and select a location.

Tip: You can add items to your Itinerary in any order and rearrange the order later.

Following an Itinerary

When you use an Itinerary to navigate, the route will be calculated to the first destination on the Itinerary. Your TomTom ONE/XL calculates the remaining distance and time to the first destination and not for the whole Itinerary.

As soon as you start to use an Itinerary, the route is calculated from your current position. You do not need to set a departure point.

When you have passed a waypoint or reached a destination, it is marked as visited.

Waypoints are shown on the map. Your ONE/XL will not warn you when you are approaching a waypoint or when you arrive at a waypoint.

Organizing an Itinerary

Tap an item on your Itinerary to open a page of buttons for editing the item. The buttons shown below are available.



Mark as waypoint

You can change a destination into a waypoint using this button.

Remember that waypoints are points on your trip to your destination that you want to pass and destinations are places where you want to stop.

This button is only shown if the item you tapped is a destination.



Mark as destination

You can change a waypoint into a destination using this button.

Remember that destinations are places where you want to stop, and waypoints are points on your trip to your destination that you want to pass.

This button is only shown if the item you tapped is a waypoint.



Mark 'visited'

Tap this button to miss out part of your Itinerary. Your ONE/XL will ignore this item and all the items before it in the Itinerary.

It will navigate you to the next item in the Itinerary.

This button is only shown if you are still due to visit this item.



Mark 'to visit'

Tap this button to repeat part of your Itinerary. Your ONE/XL will navigate you to this item followed by the rest of the items in the Itinerary.

This button is only shown if you have already visited this item.



Move item up

Tap this button to move the item up the Itinerary.

This button is unavailable if the item is at the top of the Itinerary.



Move item down

Tap this button to move the item down the Itinerary.

This button is unavailable if the item is at the bottom of the Itinerary.



Show on map

Tap this button to see the location of the item on the map.



Delete item

Tap this button to delete the item from the Itinerary.

Start Using an Itinerary

Tap **Options**, then tap **Start navigation**.

To save an Itinerary, tap **Save Itinerary**.

To load a saved Itinerary, tap **Load Itinerary**.

To create a new Itinerary, tap **New Itinerary** and to delete one, tap **Delete Itinerary**.

15. Help me

Help me provides an easy way to navigate to emergency services centers and other specialist services and contact them by phone.

For example, if you are involved in a car accident, you could use **Help me** to call the nearest hospital and tell them your exact location.

Tip: If you do not see the **Help me** button in the Main Menu, tap **Show ALL menu options** in the Preferences menu.

Options

Note: *In some countries, information may not be available for all services.*



Phone for help

Tap this button to find the contact details and location of a service center.



Drive to help

Tap this button to navigate your way by car to a service center.



Walk to help

Tap this button to navigate your way on foot to a service center.



Where am I?

Tap this button to see your current location on the map. You can then tap **Phone for help** and select the type of service you want to contact and tell them your exact location.



First Aid Guide

Tap this button to read the British Red Cross First Aid guide.



Other guides

Tap this button to read a selection of useful guides.

16. Favorites

What are Favorites?

Favorites are places that you often visit. You can create Favorites so that you don't have to enter the address every time you want to navigate there.

They don't have to be places you especially like, just useful addresses.

How can I create a Favorite?

From the Main Menu, tap **Add Favorite**.

You can then select the location of the Favorite from the list below.

Give your Favorite a name that is easy to remember. Your ONE/XL will always suggest a name, usually the address of the Favorite. To enter the name, just start typing. You don't have to delete the suggested name.



Home

You can set your Home location as a Favorite.



Favorite

You cannot create a Favorite from another Favorite. This option will always be unavailable in this menu.

To rename a Favorite, tap **Manage Favorites** in the Preferences menu.



Address

You can specify an address to be a Favorite. When you enter an address, you can choose from four options.

- **City center**
- **Street and house number**
- **Zip code**
- **Crossing or intersection**



Recent destination

Select a Favorite location from a list of places you have recently used as destinations.



Point of Interest

You can add a Point of Interest (POI) as a Favorite.

Does it make sense to do this?

If you visit a POI you particularly like, for example a restaurant, you can add it as a Favorite.

To add a POI as a Favorite, tap this button, then do the following:

1. Narrow your choice of POIs by selecting the area where the POI is.

You can select one of these options:

- **POI near you** - to search from a list of POIs near your current position.
- **POI in city** - to choose a POI in a particular town or city. You have to specify a town or city.
- **POI near Home** - to search from a list of POIs near your Home location.

If you are currently navigating to a destination, you can also select from a list of POIs which are on your route or near your destination. Choose one of these options:

- **POI along route**
- **POI near destination**

2. Select the category of POI.

Tap the category of POI if it is shown or tap the arrow to choose from the complete list.

Tap **Any POI category** to search for a POI by name.



My location

Tap this button to add your current position as a Favorite.

For example, if you stop somewhere interesting, while you are there you can tap this button to create the Favorite.



Point on map

Tap this button to create a Favorite using the map browser.

Select the location of the Favorite using the cursor, then tap **Done**.



**Latitude
Longitude**

Tap this button to create a Favorite by entering latitude and longitude values.



**Position of
last stop**

Tap this button to select your last recorded position as your destination.

How can I use a Favorite?

You will normally use a Favorite as a way of navigating to a place without having to enter the address. To navigate to a Favorite, do the following:

1. Tap the screen to bring up the main menu.

2. Tap **Navigate to...**
3. Tap **Favorite**.
4. Select a Favorite from the list.

Your ONE/XL calculates the route for you.

5. When the route is calculated, tap **Done**.

Your ONE/XL will immediately start guiding you to your destination with spoken instructions and visual instructions on the screen.

How can I change the name of a Favorite?

1. Tap the screen to bring up the main menu.
2. Tap **Change preferences** to open the Preferences menu.
3. Tap **Manage Favorites**.
4. Tap the Favorite you want to rename.
5. Tap **Rename**.

How can I delete a Favorite?

1. Tap the screen to bring up the main menu.
2. Tap **Change preferences** to open the Preferences menu.
3. Tap **Manage Favorites**.
4. Tap the Favorite you want to delete.
5. Tap **Delete**.

17. Traffic information using RDS-TMC

The Traffic Message Channel (TMC)

You can receive traffic information on your TomTom ONE/XL using the TomTom RDS-TMC Traffic Receiver. The TMC transmits traffic information as a radio signal.

Tip: The TomTom RDS-TMC Traffic Receiver is included with some products and available as an accessory for others. Visit **tomtom.com** for more information.

The Traffic Message Channel (TMC) is not a TomTom Service. FM radio stations in several countries broadcast TMC information as part of their programming. TMC is also known as RDS-TMC traffic information.

Your TomTom navigation device uses this information to warn you about traffic delays along your route and how you can avoid them.

Note: TomTom is not responsible for the availability or quality of traffic information provided by TMC.

*TMC is not available in all countries or regions. Visit **tomtom.com** to check if it is available in your country or region.*

Using traffic information

To start using TMC, connect the TomTom RDS-TMC Traffic Receiver to the USB connector on your device.

Note: The RDS-TMC receiver does not work if the Car Charger is not connected.



As soon as you start receiving traffic information, the traffic sidebar is shown on the right side of the Driving View. The traffic sidebar warns you about any traffic incidents on your route.

In this example, there is a traffic jam on your route 9 miles ahead that will cause an expected delay of 38 minutes.

These symbols are shown at the top of the traffic sidebar:



Your ONE/XL has the latest RDS-TMC traffic information.



Your ONE/XL is waiting to download the latest RDS-TMC traffic information as soon as it is available.



Your ONE/XL is searching for a radio station that carries RDS-TMC traffic information.

To find the quickest route to your destination, do the following:

1. Tap the Traffic sidebar.
2. Tap **Minimize traffic delays**.

Your device looks for the quickest route to your destination.

The new route may also include traffic delays, or may even be the same route as before.

3. Tap **Done**.

Changing traffic preferences



Change Traffic preferences

Use the **Change Traffic preferences** button to choose how traffic information works on your device.

1. Tap the **TomTom Traffic** button in the Main Menu on your device.
2. Tap **Change Traffic preferences**.

You can change the following preferences:

- **Beep when traffic situation on route changes** - if you select this option your device beeps when a new traffic incident occurs on your current route.
 - **Tune manually by entering a frequency** - if you select this option, the button **Tune manually** is shown in the Traffic menu. Tap **Tune manually** to enter the frequency of a particular radio station you want to use for RDS-TMC traffic information.
3. Select or clear the check box next to each preference you want to change.
 4. Tap **Done**.
 5. Select what should happen if the traffic situation changes when you are driving and a faster route is found. You can choose from these options:
 - **Always switch to that route** - your route will automatically be updated to the faster route.
 - **Ask me if I want that route** - you are asked if you want to stay on your current route or switch to the faster route.
 - **Never change my route** - your route is not changed and you are not asked if you want to change your route.
 6. Tap **Done**.

Traffic incidents

Traffic incidents are displayed both on the Driving View and also on the Traffic sidebar as small symbols. There are two type of symbols:

- Symbols shown in a red square are traffic incidents. Your navigation device can replan to avoid them.
- Symbols shown in a red rectangle are weather related. Your device does not replan to avoid these warnings.

Traffic incident symbols and their meaning are shown below:



Accident



Road works



One or more lanes closed



Road closed



Traffic incident



Traffic jam

Weather related symbols and their meaning are shown below:



Fog



Rain



Wind



Ice



Snow



Note: The incident avoided symbol is shown for any traffic incident that you avoid using **TomTom Traffic**.

Setting the radio frequency for RDS-TMC information



If you know the frequency of a particular radio station you want to use for RDS-TMC traffic information, do the following to set the frequency manually:

To activate this feature, you must first enable manual tuning. To do this, tap the Traffic bar in the Driving View, then tap **Change Traffic preferences**. Select **Tune manually by entering a frequency** and then tap **Done**.

1. Tap the Traffic sidebar in the Driving View.
2. Tap **Tune Manually**.
3. Enter the frequency of the radio station.
4. Tap **Done**.

Your TomTom device looks for your radio station. If it doesn't find a radio station at the frequency you set, it automatically continues to search for the next available station.

Making commuting to work easier

The **Home to work** and **Work to home** buttons in the Traffic menu let you check your route to and from work with one tap of a button. When you use either of these buttons, your device checks the route for possible delays, and if it finds any, provides you with the possibility to avoid them.

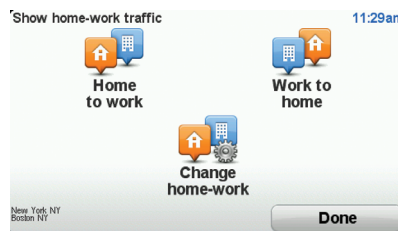
The first time you use **Home to work**, you must set your home and work locations for this feature by doing the following:



1. Tap the **TomTom Traffic** button in the Main Menu on your device.
2. Tap **Show home-work traffic**.
3. Tap **Change home-work**
4. Set your home location
5. Set your work location.

Note: The home location you set here is not the same as your Home location that you set in the Preferences menu and is shown in the **Navigate to** menu.

You can now use the **Home to work** and **Work to home** buttons of the Show home-work traffic menu.



For example, to check for delays on your route home, do the following:

1. Tap **TomTom Traffic** in the Main Menu on your device.
2. Tap **Show home-work traffic**.
3. Tap **Work to home**.

The Driving view is shown.

To see if there is a quicker way home, tap **Find alternative** and then tap **Minimize delays**.

Checking traffic incidents in your area



Browse map

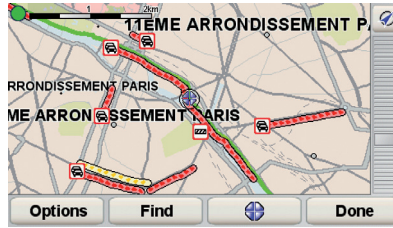
Get an overview of the traffic situation in your area, using the map. To find local incidents and their details, do the following:

1. Tap the TomTom **Traffic** button in the Main Menu on your device.
2. Tap **Browse map**.

The map browser screen is shown.

3. Tap the blue compass image in the top right of the screen.

The map centers itself on your current location, and any traffic incidents in the area are shown as small symbols.



4. Tap on any traffic incident to get more information.

A second screen is shown that gives you detailed information about the incident you chose. To display information about surrounding incidents use the left and right arrows at the bottom of this second screen.

Traffic menu

Tap the Traffic sidebar in the Driving View to open the Traffic menu. The following buttons are available:



Minimize delays

Replans your route based on the latest traffic information.



Show home-work traffic

Checks the traffic along your Home to Work route.



Show traffic on route

Tap this button to show areas of traffic congestion along your current route.



Browse map

Shows an overview of traffic incidents on the map.



Change Traffic preferences

Changes the settings for Traffic services.

18. TomTom Safety Alerts



The TomTom Safety Alerts service warns you about safety camera locations.

Important: Regularly connect your navigation device to TomTom HOME to update the list of locations for all Safety Alerts. If a wireless connection is available for your device, mobile safety camera locations can be sent to your device using a wireless connection.

When a safety camera location is shown on the map, a warning sound is played to warn you that you are approaching an area where a safety camera is located.

If you discover a location that has a safety camera but you receive no warning, you can report the new location to TomTom using your ONE/XL.

Safety camera warnings

Warnings are given 15 seconds before you reach a safety camera location.

You are warned in three ways:

- Your TomTom ONE/XL plays a warning sound.
- The type of safety camera and your distance from the camera location is shown in the Driving View. If a speed restriction that has been reported for the camera, the speed is also shown in the Driving View.
- The location of the safety camera is shown on the map.

Changing the way you are warned



To change the way your TomTom ONE/XL warns you about safety cameras, tap the **Change warning preferences** button.

You can then set how close you want to be to a safety camera before you are warned and what type of sound will be played.

For example, to change the sound that is played when you approach a fixed safety camera, do the following:

1. Tap TomTom **Safety Cameras** in the Main Menu.
2. Tap **Change warning preferences**.

A list of safety camera types is displayed. A speaker is shown next to the speed camera types that have been set for an alert.

3. Tap **Fixed safety cameras**.

Tip: If you want to change the warning sounds for all camera types to a single sound, tap **<ALL>** instead of **Fixed safety cameras** in step 4 above.

4. Tap **NO** to avoid removing the fixed safety camera alerts.
5. Enter the time in seconds for when a warning is given before you reach a camera. Then tap **OK**.
6. Tap the sound you want to be used for the warning. For example, to select a bugle sound tap on **Bugle**.
7. Tap **YES** to save your changes.

Report button

To show the report button in the Driving View, do the following:

1. Tap TomTom **Services** in the Main Menu.
2. Tap TomTom **Safety Cameras**.
3. Tap **Enable report button**.

The report button is shown on left-hand side of the Driving View or, if you are already using the quick menu, it's added to the buttons available in the quick menu.

Reporting a new safety camera while on the move

1. Tap the report button shown in the Driving View or in the quick menu to record the location of the camera.
2. Tap **Mobile camera** or **Fixed camera**.
3. Tap the type of camera you want to report.

Note: If the type of camera you choose has a speed restriction, you can also enter the speed.

Reporting a new safety camera while at home

You do not need to be at the location of a safety camera to report the new location.

To report a new safety camera location while you are at home, do the following:

1. Tap TomTom **Services** in the Main Menu.
2. Tap TomTom **Safety Cameras**.
3. Tap **Report safety camera**.
4. Tap **Mobile camera** or **Fixed camera** depending upon the type of safety camera.
5. Find the location of the camera you want to report using the Map browser.
Use the cursor to mark the exact location, then tap **Done**.
6. Tap on the type of camera you want to report and if necessary, the speed restriction for the camera.

Reporting incorrect camera alerts

You may receive an alert for a camera that is no longer there.

To report an incorrect camera alert, do the following:

1. While you are at the location of the missing camera, tap **Report** in the Driving View.

Note: This must be done within 20 seconds of receiving the camera alert.

2. Tap **Remove**.

The next time you connect your device to TomTom HOME, the camera alert is reported as incorrect.

Types of safety camera you can report

When you report a safety camera, you can select the type of safety camera you are reporting.

These are the different types of safety cameras:



Speed camera

This type of safety camera checks the speed of passing vehicles.



Traffic light camera

This type of safety camera checks for vehicles breaking traffic rules at traffic lights.



Toll road camera

This type of safety camera monitors traffic at toll road barriers.



Average speed check

This type of safety camera checks the average speed of vehicles between two fixed points.



**Vehicle
restriction**

This type of safety camera checks traffic on roads where access is restricted.



**Other
cameras**

All other types of cameras that do not fall into any of the above categories.

TomTom Safety Camera menu

To open the Safety Cameras menu, tap the TomTom **Services** in the Main Menu and then tap TomTom **Safety Cameras**.



**Report safety
camera**

Tap this button to report a new safety camera location.



**Change
warning
preferences**

Tap this button to set the safety alerts you will receive and which sounds will be used for each alert.



**Disable
alerts**

Tap this button to disable safety alerts.



**Enable
automatic
updates**

Tap this button to enable automatic updates for your list of mobile safety camera locations. The list of fixed safety cameras is not updated automatically as they don't change as often as mobile cameras.



**Enable report
button**

Tap this button to enable the report button. The report button is shown in the Driving View or in the quick menu.

19. Fuel Prices



The Fuel Prices service sends up-to-date information about fuel prices to your device via TomTom HOME when your ONE/XL is connected to your computer.

Search for the best fuel prices

To search for the cheapest fuel prices, do the following. In this example, you will plan a route to the cheapest gas station nearby.

1. Tap the screen to bring up the Main Menu, then tap **TomTom Services**.
2. Tap **Fuel Prices**.
3. Select the type of fuel used in your vehicle.
4. Tap **Cheapest nearby**, then tap the name at the top of the list.

The location is shown on the map.

5. Tap **Select**.

You are asked if you want to navigate to the gas station.

6. Tap **Yes**.

You may be asked if you need to arrive at a particular time, if this option is enabled.

The route is planned and a summary of the route is shown on the map.

20. Introducing TomTom HOME

TomTom HOME is a free application for your computer that helps you manage the contents of your TomTom ONE/XL navigation device. It is a good idea to frequently connect to HOME to ensure you always have the latest updates on your device.

You can, for example, do the following:

- Manage maps, voices, POIs and more.
- Buy TomTom services and manage your subscriptions.
- Update your device automatically with the latest software and services.
- Make and restore backups.
- Read the full version of the user manual.

Tip: We recommend using a broadband internet connection whenever you connect to HOME.

It is a good idea to make regular backups of your navigation device using HOME.

Installing TomTom HOME

To install TomTom HOME on your computer, do the following:

1. Connect your computer to the internet.
2. Connect your device to your computer using the USB cable, then switch your device on.

HOME starts to install.

Note: If HOME does not install automatically, you can also download it from [**tomtom.com/home**](http://tomtom.com/home)

TomTom HOME starts automatically when the navigation device is switched on while the device is connected to your computer.

MyTomTom Account

To download content and services using TomTom HOME, you need a MyTomTom account. You can create an account when you start using TomTom HOME.

21. Addendum

Important Safety Notices and Warnings

Global Positioning System

The Global Positioning System (GPS) is a satellite-based system that provides location and timing information around the globe. GPS is operated and controlled under the sole responsibility of the Government of the United States of America, which is responsible for its availability and accuracy. Any changes in GPS availability and accuracy, or in environmental conditions, may impact the operation of your TomTom device. TomTom does not accept any liability for the availability and accuracy of GPS.

Use with Care

Use of a TomTom device for navigation still means that you need to drive with due care and attention.

Aircraft and Hospitals

Use of devices with an antenna is prohibited on most aircraft, in many hospitals and in many other locations. A TomTom device must not be used in these environments.

Taking care of your TomTom device

Do not leave your TomTom device or TomTom accessories on view when you leave your car. They may become an easy target for thieves.

You can set a password for your device which must be entered every time you start your device.

We recommend that you use the safety preferences on your TomTom device, where available. The safety preferences are available in the Preferences menu.

Take care of your TomTom device and clean it correctly.

- Use a soft cloth to wipe the screen of your device; do not use any liquid cleaners.
- If your device gets wet, dry it with a soft cloth.
- Do not open the casing of your device under any circumstances. Doing so may be dangerous and will invalidate your warranty.
- If your device includes a memory card, do not use the memory card with any device other than a TomTom device. Other devices may damage the memory card.
- Do not expose your device to high or low temperatures, which can cause permanent damage. For example, don't leave it in the car on hot summer days or during cold winter nights.

Battery

This product uses a Lithium-Ion battery. Do not use it in a humid, wet and/or corrosive environment. Do not put, store or leave your product in or near a heat source, in a high temperature location, in strong direct sunlight, in a microwave oven or in a pressurized container, and do not expose it to temperatures over 60 C (140 F). Failure to follow these guidelines may cause the Lithium-Ion battery to leak acid, become hot, explode or ignite and cause injury and/or damage. Do not pierce, open or disassemble the battery. If the battery leaks and you come into contact with the leaked fluids, rinse thoroughly with water and seek medical attention immediately. For safety reasons, and to prolong the lifetime of the battery, charging will not occur at low (below 0 C/32 F) or high (over 45 C/113 F) temperatures.

Temperatures: Standard operation: -10 C (14 F) to +55 C (131 F); short period storage: -20 C (-4 F) to + 60 C (140 F); long period storage: -20 C (-4 F) to +25 C (77 F).



THE LITHIUM-ION BATTERY CONTAINED IN THE PRODUCT MUST BE RECYCLED OR DISPOSED OF PROPERLY. USE YOUR TOMTOM ONLY WITH THE SUPPLIED DC POWER LEAD (CAR CHARGER/ BATTERY CABLE) AND AC ADAPTER (HOME CHARGER) FOR BATTERY CHARGING.

To recycle your TomTom unit please see your local approved TomTom service center.

The stated battery life is a maximum possible battery life. The maximum battery life will only be achieved under specific atmospheric conditions. The estimated maximum battery life is based on an average usage profile.

For tips on extending the battery life, go to the FAQ listed below for your country:

AU: www.tomtom.com/8703
CZ: www.tomtom.com/7509
DE: www.tomtom.com/7508
DK: www.tomtom.com/9298
ES: www.tomtom.com/7507
FI: www.tomtom.com/9299
FR: www.tomtom.com/7506
HU: www.tomtom.com/10251
IT: www.tomtom.com/7505
NL: www.tomtom.com/7504
PL: www.tomtom.com/7503
PT: www.tomtom.com/8029
RU: www.tomtom.com/10250
SE: www.tomtom.com/8704
UK: www.tomtom.com/7502
US: www.tomtom.com/7510

SPECIAL NOTE REGARDING DRIVING IN CALIFORNIA AND MINNESOTA

California Vehicle Code Section 26708 (a) (1) provides that "No persons shall drive any motor vehicle with an object or material placed, displayed, installed, affixed or applied upon the windshield or side or rear windows." Drivers in California should not use a suction mount on their windshield, side or rear windows.

Note: this section of the California Vehicle Code applies to anyone driving in California, not just California residents.

Minnesota State Legislature Statutes Section 169.71, subdivision 1, section 2 provides that "A person shall not drive or operate with any objects suspended

between the driver and the windshield other than sun visors and rearview mirrors and electronic toll collection devices.”

Note: this Minnesota Statute applies to anyone driving in Minnesota, not just Minnesota residents.

TomTom Inc. bears no responsibility for any fines, penalties or damage that may be incurred by disregarding this notice. While driving in any state with windshield mounting restrictions, TomTom recommends the use of the supplied Adhesive Mounting Disk or its Alternative Mounting Kit, which includes multiple options for mounting TomTom devices on the dashboard and using the air vents. See www.tomtom.com for more information about this mounting option.

FCC Information for the User



This product contains a transmitter which must not be co-located or simultaneously operated in conjunction with any other transmitter.

Exposure to Radio Frequency Radiation

This device complies with FCC radiation exposure limits set forth for an uncontrolled environment. In order to avoid the possibility of exceeding the FCC radio frequency exposure limits, human proximity to the antenna shall not be less than 8 inches (20 cm) during normal operation.

Radio and Television Interference

This equipment radiates radio frequency energy and if not used properly - that is, in strict accordance with the instructions in this manual - may cause interference to radio communications and television reception.

This device has been tested and found to comply with the limits for a Class B digital device, pursuant to Part 15 of the FCC Rules. These limits are designed to provide reasonable protection against harmful interference in a residential installation. This equipment generates, uses and can radiate radio frequency energy and, if not installed and used in accordance with the instructions, may cause harmful interference to radio communications. However, there is no guarantee that interference will not occur in a particular installation. If this equipment does cause harmful interference to radio or television reception, which can be determined by turning the equipment off and on, the user is encouraged to try to correct the interference by one or more of the following measures:

- Reorient or relocate the receiving antenna.
- Increase the separation distance between the equipment and the receiver.
- Connect the equipment into an outlet on a circuit different from that to which the receiver is connected.
- Consult an experienced radio/TV technician for help.

Changes or modifications not expressly approved by the party responsible for compliance could void the user's authority to operate the equipment.

Important

This equipment was tested for FCC compliance under conditions that included the use of shielded cables and connectors between it and the peripherals. It is important that you use shielded cables and connectors to reduce the possibility of causing radio and television interference. Shielded cables suitable for the product range can be obtained from an authorised dealer. If the user modifies the equipment or its peripherals in any way, and these modifications are not approved by TomTom, the FCC may withdraw the user's right to operate the equipment. For customers in the USA, the following booklet prepared by the Federal Communications Commission may be of help: "How to Identify and Resolve Radio-TV Interference Problems". This

booklet is available from the US Government Printing Office, Washington, DC 20402. Stock No 004-000-00345-4.

FCC Declaration of Conformity

Tested to comply with FCC Standards for Home or Office Use

This device complies with part 15 of the FCC Rules. Operation is subject to the following two conditions:

1. This device may not cause harmful interference.
2. This device must accept any interference received, including interference that may cause undesired operation.

Responsible party in North America

TomTom, Inc., 150 Baker Avenue Extension, Concord, MA 01742

Tel: 866 486-6866 option 1 (1-866-4-TomTom)

Emissions information for Canada

This Class B digital apparatus complies with Canadian ICES-003.

Operation is subject to the following two conditions: (1) this device may not cause harmful interference and (2) this device must accept any interference, including interference that may cause undesired operation of the device.

This category II radiocommunication device complies with Industry Canada Standard RSS-310.

This Document

Great care was taken in preparing this manual. Constant product development may mean that some information is not entirely up-to-date. The information in this document is subject to change without notice.

TomTom shall not be liable for technical or editorial errors or omissions contained herein; nor for incidental or consequential damages resulting from the performance or use of this material. This document contains information protected by copyright. No part of this document may be photocopied or reproduced in any form without prior written consent from TomTom International B.V.

22. Copyright notices

© 2009 TomTom International BV, The Netherlands. TomTom™ and the "two hands" logo are among the trademarks, applications or registered trademarks owned by TomTom International B.V. Our limited warranty and end user license agreement for embedded software apply to this product; you can review both at **www.tomtom.com/legal**

© 2009 TomTom International BV, The Netherlands. TomTom™ et le logo TomTom ("deux mains") comptent parmi les marques commerciales, les applications ou les marques déposées de TomTom International B.V. L'utilisation de ce produit est régie par notre garantie limitée et le contrat de licence utilisateur final relatif aux logiciels embarqués ; vous pouvez consulter ces deux documents à l'adresse suivante : **www.tomtom.com/legal**

© 2009 TomTom International BV, Países Bajos. TomTom™ y el logotipo "dos manos" son marcas comerciales, aplicaciones o marcas registradas de TomTom International B.V. Nuestra garantía limitada y nuestro acuerdo de licencia de usuario final para el software integrado son de aplicación para este producto; puede consultar ambos en **www.tomtom.com/legal**

Data Source

© 1984 – 2009 Tele Atlas North America. Inc. All rights reserved.

Canadian Data © DMTI Spatial. Portions of Canadian map data are reproduced under license from Her Majesty the Queen in Right of Canada with permission from Natural Resource Canada. Point of Interest data by Info USA. Copyright 2009.

Some images are taken from NASA's Earth Observatory.

The purpose of NASA's Earth Observatory is to provide a freely-accessible publication on the Internet where the public can obtain new satellite imagery and scientific information about our home planet.

The focus is on Earth's climate and environmental change:
earthobservatory.nasa.gov/
