



TOMTOM NAVIGATION SYSTEM

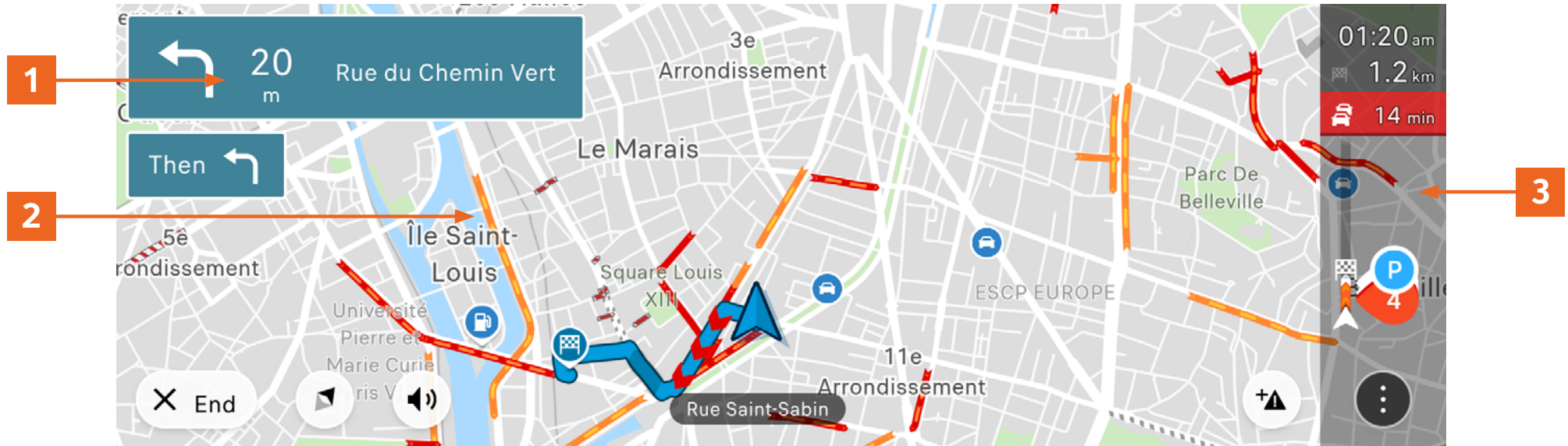
FOR CITROËN

TomTom is proud to provide the full navigation solution to all series of the new connected infotainment platform. Together with connected services, software and maps, the Citroën Navigation System offers a complete experience of connected navigation.

INSPIRED BY YOU



WHAT'S ON *THE SCREEN ?*



1. NEXT INSTRUCTION

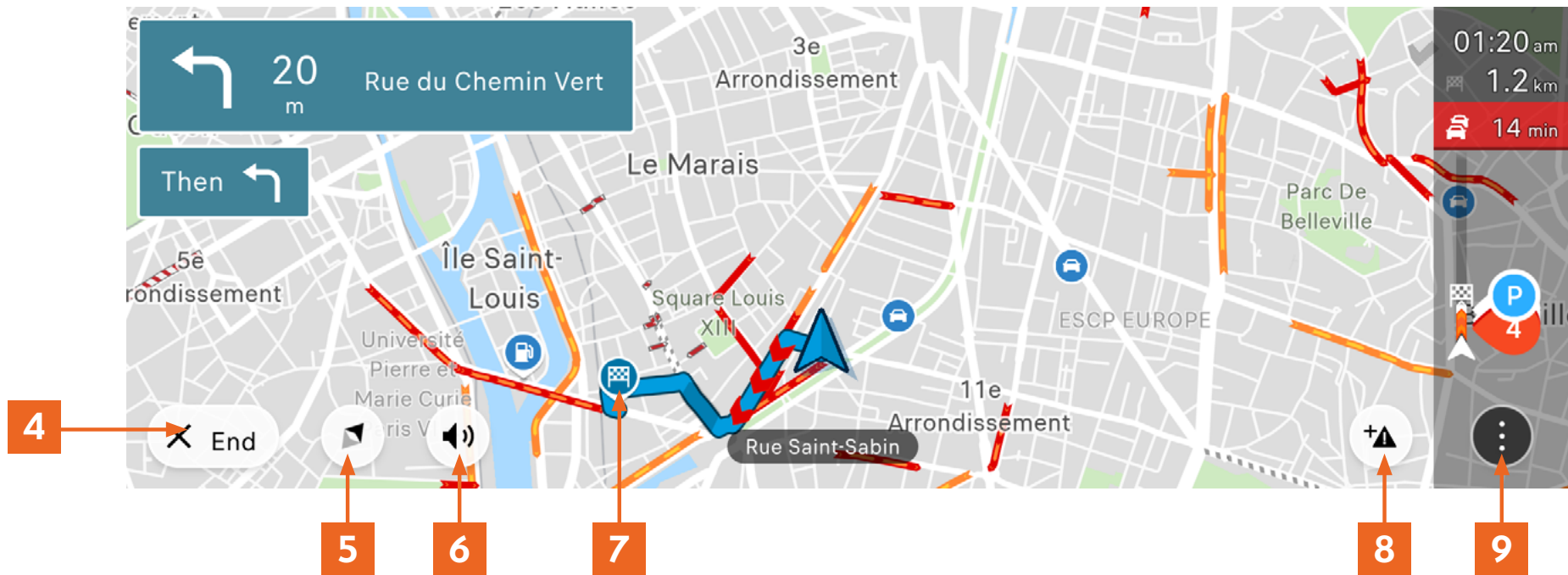
This gives details of the next manoeuvre, the name of the road, and the distance to the junction. Below this, there is also brief details of the following junction.

2. TRAFFIC

Traffic jams are represented in the map with 3 different colors: Yellow for light traffic, Orange for moderate traffic, and Red for high congestion.

3. ROUTE BAR

The route bar appears when a route is active. It has an arrival information panel on the top, and it also shows important information such as traffic delays, speedcams, POI's along your route. It is possible to hide the route bar in the map view. See settings.



4. END ROUTE BUTTON

Use this button to cancel your route. If you click on this button; you see a confirmation screen asking you to confirm that you want to cancel the route.

5. SWITCH VIEW BUTTON

Select the switch view button to change between the 3D, 2D direction up, 2D heading.

6. MUTE BUTTON

Tap on this button to choose between all guidance instructions, alerts only, or no instructions at all.

7. FINAL DESTINATION

This symbol shows your final destination of your current route.

8. SPEEDCAM REPORT

Use this button to report a speedcam on your route. If you click on the button, a pop up message will ask you to confirm the report.

9. THE OPTIONS BUTTON

Click on this button to go to the route options panel, where you can modify and get an overview of your current route.

BEST IN CLASS NAVIGATION

As the result of TomTom's extensive experience in user interface and navigation technology, drivers will benefit from a fully integrated system, all in a user-friendly intuitive solution that responds quickly to the driver's commands and changing driving conditions.

TomTom connected services are embedded in Citroën Navigation System during 3 years after car purchasing.

TABLE OF CONTENTS

1. Key advantages

2. TomTom Services

- Over-the-air Map Updates
- Dynamic Range Mapping
- Charging Station Finder
- Charging point real time availability
- Online Traffic
- TomTom Alert Service and Speedcams
- Online Search Address and Points of Interests
- Off Street Parking
- Fuel Prices
- Local Weather

3. MyCitroën

- Send to nav



KEY ADVANTAGES

1. A UNIQUE, MULTI-DEVICE EXPERIENCE

Navigation follows you on board and out of the vehicle, thanks to the MyCitroën App and the Citroën Navigation System that together offer you a seamless experience.

2. GO WITHOUT WORRIES

There is no range anxiety when you know the range of how far you can drive, even before starting your journey and what solutions are available for your trip. Unlike mobile phones, even without internet connectivity, search and routing guidance will continue to work, with the system simply switching to onboard map data.

3. EVERYTHING IS CUSTOMIZABLE

You can optimize the home screen to fit your needs, by adding favorite locations, and different applications.

4. CLUSTER DISPLAY VISUALISATION

The cluster displays Traffic hazard warnings, speed limit warning, multi-lane level guidance, and turn by turn instructions.

5. USER-FRIENDLY AND HIGHLY RESPONSIVE

Never miss an exit or turn and always know what's ahead, with clear information and no distraction. The system automatically follows the local signage according to each country's regulations, putting you in control and at ease, no matter where you are.

6. INTUITIVE AND PREDICTIVE

Navigation supports frequent drivers by offering destination suggestions based on your travel history. Instead of repetitively having to manually enter destinations (for example, Home or Work), the navigation system suggests relevant destinations at the start of the drive. By just confirming going to the suggested destination, the navigation system will inform you about the time of arrival and the traffic situation on the route that you typically take to this destination. Thanks to the shortcuts you can easily access in one single click to your favorite destination.

7. EXTENDED HEAD-UP DISPLAY

The Extended Head-Up Display projects the essential driving information onto the windscreen, in the driver's field of vision. Wide projection and spatialized effect give a unique driving experience.

8. NAVIGATE WITH VOICE RECOGNITION

Use new intuitive and efficient full natural language voice recognition to look for address and points of interest then let you guide to the one chosen. Simply say « Hello Citroen » or activate by push button.

CONNECTED SERVICES

TomTom Connected Services provide relevant information to drivers allowing them to have a more pleasant journey.

OVER-THE-AIR MAP UPDATES

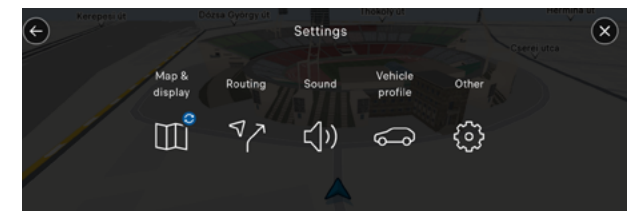


The vehicle's map of the region you drive is continually updated through a seamless over the air connection. This ensures the system is always up-to-date and responsive for the best navigation experience.

Drivers receive the most up-to-date information available automatically, eliminating manual map updates.



MAP UPDATE OVER THE AIR VIA WIFI® AND EMBEDDED CONNECTIVITY



EV SERVICES

DYNAMIC RANGE MAPPING



There is no range anxiety when you know even before starting your journey how far your car can drive and what the solutions are for your trip.

The large infotainment screen includes dynamic range mapping that visualises the vehicles real-time range on the map, as well as the nearest charging station.

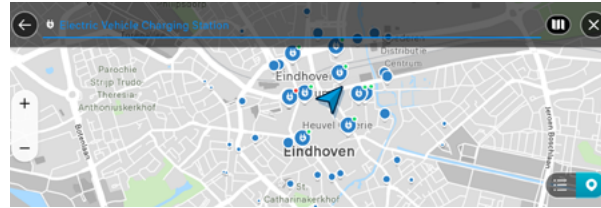
The driver will be prompted to search for an EV station if battery is running low.



**DYNAMIC
RANGE
MAPPING**

**EV Services availability depends on car model.*

CHARGING STATION FINDER



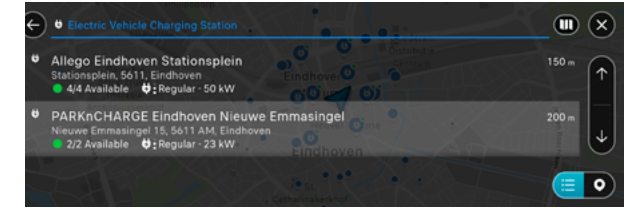
This enables EV drivers to find available locations and make informed decisions about when and where to charge. The system will prompt you automatically with a list of charging stations compatible* to your car.

- Real-time information on the EV station availability
- Flexibility to choose your preferred charging stations



**EV
STATIONS**

CHARGING STATION REAL TIME AVAILABILITY

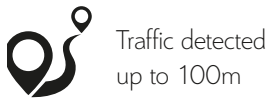
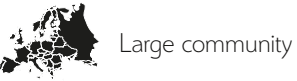


- Quick visualisation on EV availability – Red=unavailable/ Green=available
- Brand and operator names
- EV station address information, opening hours, payment method
- Along the route search, cross-border calculation

**You can set your connector type under settings one time and not worry again.*

ONLINE TRAFFIC

ONLINE TRAFFIC



Data is updated every 30 seconds. Guarantees access to the most up-to-date and accurate traffic information to help drivers arrive at their destinations faster, more safely and more reliably, regardless of their location.

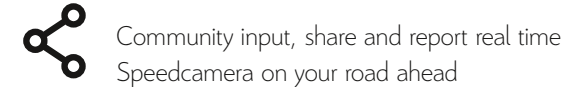
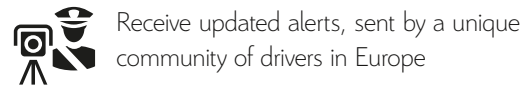
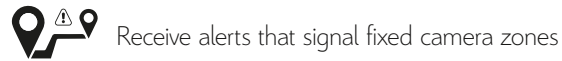
The navigation system regularly receives information about the changing traffic conditions. If traffic jams, heavy rain, snow or other incidents are found on your current route, the navigation will offer to re-plan your route and avoid any delays.



TOMTOM ALERTS SERVICE AND SPEEDCAMS



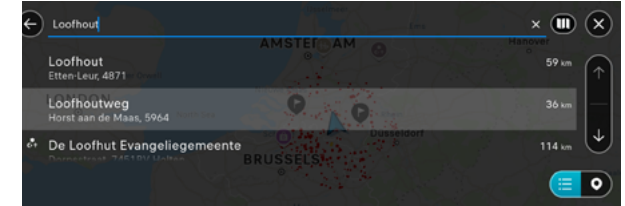
Warns drivers about what's coming ahead, reducing stress and increasing safety.



Availability depends on country legislation



ONLINE SEARCH ADDRESS AND POINTS OF INTERESTS

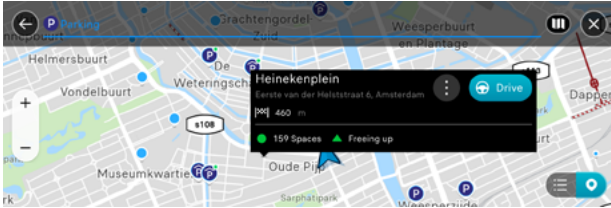


Multiple variants to search for any POI.

- Millions of useful points of interest globally
- Search by name, category or place
- Search by a nearby address, zip code or a destination
- Database is updated in real time



OFF STREET PARKING



Shows parking lot locations nearby, along your route or near your destination, including:

- Realtime availability
- Opening hours
- Available services
- Prices*

**Availability depends on country.*



FUEL PRICES

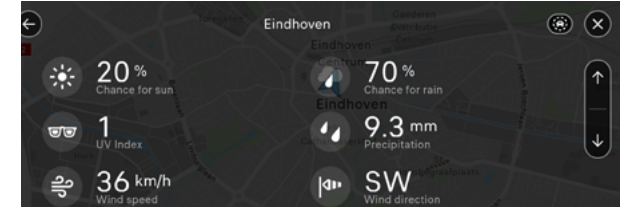


Search and display fuel stations on the road to or on the entire map.

- Information on prices, location, brand and opening hours
- Autonomy radius view on the map when low fuel



LOCAL WEATHER



Drivers have access to daily and hourly weather information at their fingertips, including:

- Five-day weather forecasts for towns and cities
- Includes daily high and low temperatures, wind speed direction and amount of precipitation



DISCOVER *MY CITROËN APP*

Reaching your destination has never been so easy. You always know where your car is located, you can search for any POI (e.q. charging stations, parking places, restaurants, attractions) in MyCitroën App and send it to your car as destination.





INSPIRED BY YOU

