



Pickup
action
Kearney St
San Francisco, CA 94108
USA
location



Pickup requested
Accepted
alert
Route recalculated
delivery route

Decline

ON-DEMAND

Lock in customer
loyalty with accurate
ETAs every time.

Ensure a seamless experience for both drivers and customers, whether it is hailing a ride, dinner, or parcel. Arrive at the time you promise with reliable location technology that you can tailor to your ETA calculations.

About TomTom

TomTom is the leading independent location technology specialist, shaping mobility with highly accurate maps, navigation software, real-time traffic information and services. To achieve our vision of a safer world, free of congestion and emissions, we create innovative technologies that keep the world moving. By combining our extensive experience with leading

business and technology partners, we power connected vehicles, smart mobility and, ultimately, autonomous driving. Headquartered in Amsterdam with offices in 30 countries, TomTom's technologies are trusted by hundreds of millions of people worldwide.

[Learn more >](#)



Our offering at a glance

Get more control and flexibility out of your maps with TomTom. Use what you need, mix and match your location technology to optimize your user experience by using the most accurate ETAs and travel times. Integrate datasets to your own software, or rely on our expertise through our API services.

Companies like Uber and Verizon manage their fleets and provide navigation to their professional drivers with TomTom's location technology.

Services

APIs & SDKs to integrate in your applications



Tracking

location history,
geofencing,
notifications



Traffic

traffic flow,
traffic incidents



Software Development Kits

iOS, Android™,
JavaScript



Maps

map display,
custom styles



Directions

traffic-enabled routing,
route reconstruction,
consumption models,
matrix routing



Places

search, geocoding,
reverse geocoding,
points of interest,
speed limits

Datasets

Detailed data to use in your own software



High precision maps for 160+ countries

road geometry, address data,
road attributes, speed signs,
points of interest



Traffic data from 600 million connected devices

traffic flow, traffic incidents,
predictive traffic, traffic density,
traffic analysis

*Look for our icons throughout the brochure to see which solutions can be used

An aerial photograph of London, England, featuring the River Thames and the Tower Bridge. Overlaid on the image are two digital information panels. The left panel displays: '5:02pm Current time', '58 min Estimated travel time', and '3 min Delay'. The right panel displays: '5:02pm Current time', '1:21 h Estimated travel time', and '13 min Delay'. Colored translucent shapes (red, yellow, green) are positioned over the river and bridge area, suggesting different traffic lanes or zones. The text 'EFFICIENT DRIVER MATCHING' is prominently displayed in the lower-left quadrant.

EFFICIENT DRIVER MATCHING

Reduce wait times and increase driver utilization with advanced road data, detailed address points, and predictive traffic.

Get detailed addresses for any location

Location is more than latitude and longitude.

When a customer turns on your app, their latitude and longitude needs to be translated into a readable address with contextual information for a smoother driver experience. By adding geographical context to the position of your driver and the requesting customer, you can ensure you are always selecting the right driver for each customer - and that the driver is always routed to the right location.

The TomTom address database enables you to perform reverse geocoding in over 164 countries. Our datasets with over 528 million detailed address points can be used in your own geocoder or as a service with our Search API.

Use TomTom address data to retrieve geographical context such as:

- > Side of road
- > Road use & number
- > Postal code
- > Speed limit
- > Administrative areas
- > Mapcode

PRODUCTS

-  [Search API for Reverse Geocoding](#)
-  [Map Dataset with Address Points](#)





Predict accurate travel times

Take the “estimated” out of ETA.





Efficient dispatching relies on accurate travel times, and accurate travel times rely on sophisticated insights on traffic conditions.

With live traffic data from more than 600 million connected devices, TomTom provides APIs to monitor traffic flow and incidents. Knowing traffic enables a quick calibration to disruptions, for timely re-routing or quick driver swapping to decrease pick-up time for all parties.

Use award-winning TomTom traffic data to:

- Ensure that the algorithms matching and pricing your drivers’ routes to customers are as dynamic as the road networks
- Guide drivers around traffic jams, road closures and other incidents based on real-time traffic insights
- Calculate and select the routes with the most reliable ETAs based on predictive traffic insights

PRODUCTS

-  Traffic API
-  Route Monitoring
-  Speed Profiles
-  Intermediate Traffic



Select the right driver for the job

Selecting the right drivers for your customers doesn't always have to be so complex.

Rely on us to do the heavy lifting for you with tools like matrix and batch routing, which quickly let you decide which driver to dispatch for each rider.

Easily match a rider and retrieve an ETA for all of the drivers at the same time to determine which one is best positioned to take on the job. All of our routing solutions are already equipped with our world-class traffic data, so you know your decisions are based on reliable travel times.

Use TomTom's traffic-enabled Routing API to:

- Retrieve travel times and distances between multiple locations using matrix routing
- Calculate hundreds of routes simultaneously using batch routing to determine what time your driver should leave
- Use isochrones to determine which stores are best suited for your consumer to purchase from based on their location
- Tailor the routing algorithm to any travel mode, whether it is a car, EV, van, bike, or truck.

PRODUCTS

- ↗ [Routing API for Matrix Routing](#)
- ↗ [Routing API for Batch Routing](#)
- ↗ [Routing API for Reachable Range](#)

An aerial photograph of a complex highway interchange. The main road has a blue lane on the left and a red lane on the right, both with white dashed lane markings. Several overpasses and ramps are visible, some with blue and some with red surfaces. A few vehicles, including a white car and a truck, are visible on the main road. The surrounding area includes some greenery and a small body of water on the left.

ROUTE OPTIMIZATION

Leverage advanced logistics datasets, detailed address point data, and traffic-enabled routing to maximize driver efficiency.

Find destinations with doorstep accuracy

Search for the right restaurant or bar, and reduce times spent at pick-up and drop-offs. Keep your drivers happy and don't let them waste time searching for the destination or the front door. The geocoding technology in our Search API leverages global high-quality address data and points of interest (POIs) to get drivers to the right doorstep. Our datasets with over 528 million detailed address points and millions of POIs can be used in your own geocoder or as a service with our Search API.

Use TomTom address and POI data to:

- Easily search and find destinations with doorstep accuracy
- Get structured addresses with entrance points, postal codes, opening hours, and more
- Search within millions of POIs, including businesses and gas stations

PRODUCTS

-  [Search API](#)
-  [Map Dataset with Address Points and Points of Interest](#)



Plan the best route for your driver

Keep both your drivers and customers happy with smooth routes and reliable ETAs.

The route with the best ETA is not only the fastest – it also has the ETA that is the most reliable and accurate. Customers are happiest when they can trust that your driver will arrive at the time you've promised them. Deviations from the ETA, even when arriving unexpectedly earlier, can be quite costly when it comes to customer satisfaction.


Our algorithms are designed with turn costs in mind, so that not only will your driver be taking the fastest route – they'll also have a high likelihood of arriving at their destination on time. Choose from the Routing API or build your own software using our maps and predictive traffic datasets.

Use TomTom routing technology and traffic data to:

- Calculate routes already equipped with our traffic data to ensure accurate travel times
- Get vehicle-specific routes whether it is a car, van, bike, or truck
- Get precise indications of which parts of the journey are via toll roads
- Route your drivers through gas stations or EV charging stations when needed so they're always ready for a pick-up

PRODUCTS

- 📍 [Routing API](#)
- 🗺️ [Map Dataset with Road Attributes](#)
- 🗺️ [Map Dataset with Speed Profiles](#)



11:26 am
ETA
7 min
Delay



11:23 am
ETA
4 min
Delay

REAL-TIME TRACKING

Use extensive global mapping data
to track drivers, add context to their
location, and monitor their behavior.
Learn and optimize for the future.






Retrace your driver's routes

You know where your drivers are, but do you know where your drivers have been? Retrace the steps of your drivers using our tracking and routing APIs. Learn from the past to ensure you are always optimizing your operations with better routes and pick-up points.

Use TomTom's Tracking and Routing APIs to:

- > Safely store the locations of drivers and customers in the cloud
- > Use the Snap to Road service to translate a series of GPS points into the most likely driven route
- > Calculate distance and time
- > Visualize tracked routes or past locations of your drivers on a map
- > Calculate fuel or energy consumption for the driven route to ensure your drivers are fairly compensated

PRODUCTS

-  Location History API
-  Routing API
-  Map Display API



A 3D isometric map of a city street grid. A white car is positioned on a red line that represents a route. A red rectangular box with white text and icons is overlaid on the map. The box contains the text 'Route deviation', '65 mph estimated speed', '5:25 time', and 'US 101, CA address'. The map shows various buildings, streets, and a body of water in the background.

Detect unsafe driving behavior

Reckless or inattentive drivers pose a risk for customer safety. Detect potential speed violations by using our extensive legal speed limits data, and receive an alert when a driver has veered far off a designated route.

Use TomTom speed limits as a dataset or via the Search API to:

- Retrieve the legal speed limit on any location point on the road
- Use them in combination with a reconstructed route to detect likely speed violations

Use TomTom Geofencing and Tracking APIs to:

- Create geofences with a corridor feature to draw fences around routes
- Set up and manage hundreds of virtual fences, stored in a secure cloud location
- Create alerts via webhooks whenever a driver has veered outside of a geofence
- Trigger an alert when a driver has been in one location for too long

PRODUCTS

- 📍 Search API
- 📍 Geofencing API
- 📍 Location History API
- 📖 Map Dataset with Verified Speed Limits
- 📖 Map Dataset with ADAS Speed Restrictions

A 3D perspective view of a city map with white buildings. A yellow delivery truck icon is positioned on a green street. A teal data overlay is connected to the truck by a white line. The overlay contains icons for a truck, a clock, and a box, along with the text '53km/h speed', '15h30 arrival time', and '2 number of packages'.

Take action based on location

When is my food delivery arriving? Is my rider waiting at the designated pick-up spot?

With our geofencing and tracking technology, alert customers when their driver is arriving, or when the driver has just departed from an area.

Use TomTom Geofencing and Tracking APIs to:

- Generate custom alerts and send notifications by email, text, or straight to another device as a push notification based on a driver's or customer's location
- Keep your customer updated on the driver's location with departure notifications when a driver has just picked up your customer's meal, and an arrival notification when a driver is arriving at a customer's location
- Assign and alert drivers when a rider is approaching a designated pick-up location such as an airport-designated ridehailing hub
- Create zones with variable pricing for drivers that is triggered when drivers enter
- Trigger alerts with dwell time when a customer has been waiting too long

PRODUCTS

- 📍 Location History API
- 📍 Routing API
- 📍 Map Display API
- 📍 Notification API



1 We're location technology specialists

Location is our one and only business. We've been at it for over 30 years and we're experts in what we do. We know the roads: where to go, and how to get you there.

2 We're flexible

Your technology stack is what makes your business unique – so our business model is built to adapt to yours. Add our datasets to your own software, use our APIs, or have a combination of both.

3 We co-innovate with you

Find out why companies like Verizon, Microsoft, and Huawei choose to partner with TomTom as co-innovators. We are known for our reliability, the quality of our support, and our ability to deliver on our commitments.

4 We're ready to grow with you

With detailed maps in over 160 countries, our global coverage ensures that we can support wherever you want to expand to. Scale without worry – our infrastructure is ready when you grow.

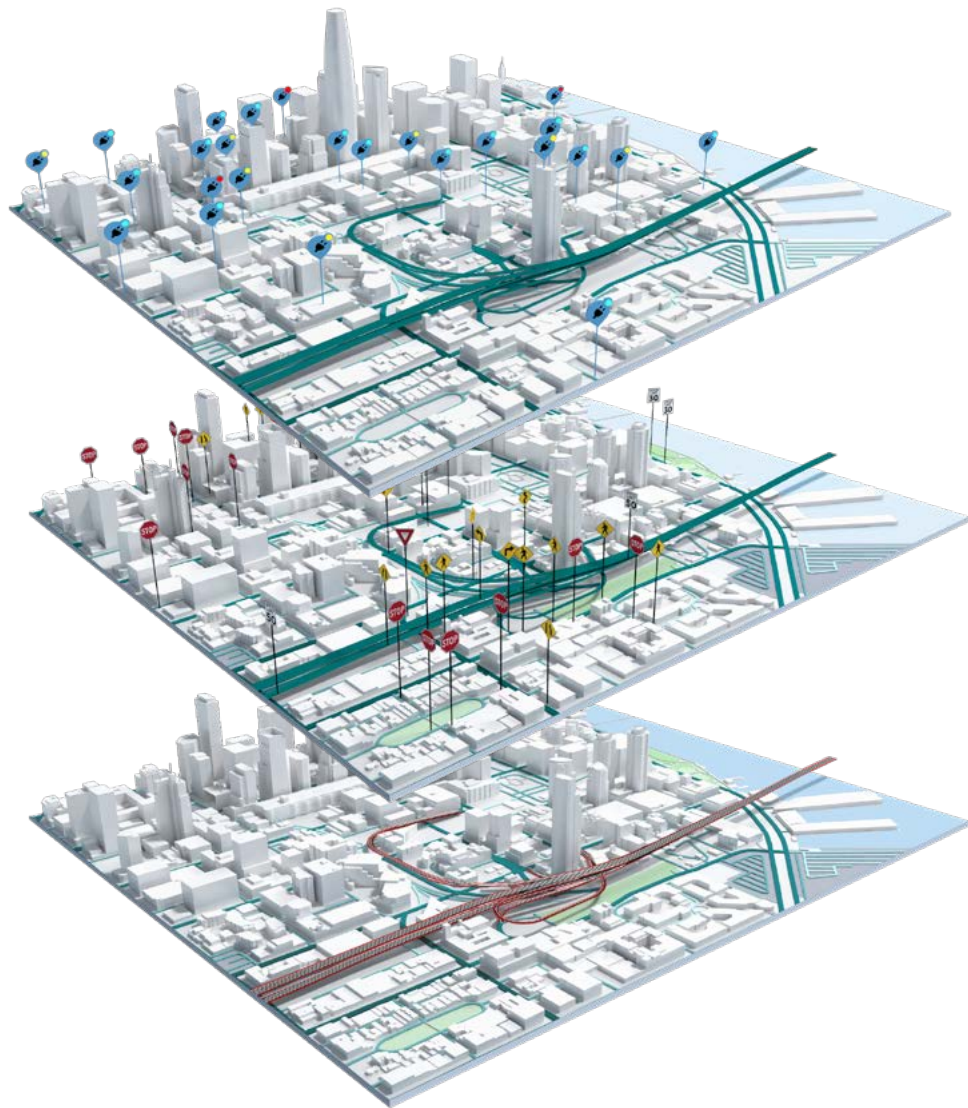
5 We're a one-stop shop

Maps, road attributes, geocoding, speed limits, APIs, datasets: we have it all. By working with us as your location technology specialist, you can get everything you need in one place.

CONTACT US

Find out what we can do for your business

> tomtom.com/contactenterprise



Learn more:

> tomtom.com
> developer.tomtom.com