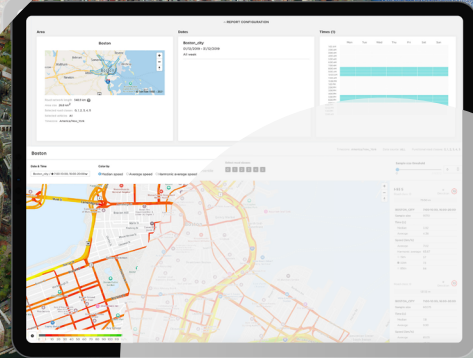




# Traffic Stats

Road network analysis and bottleneck intel



## Overview

Since 2008 TomTom has been collecting anonymous consumer-driven GPS based measurements from its global community. With these trillions of measurements, TomTom built a historical traffic database that is completely unique in the industry.

TomTom Traffic Stats provides insights into the traffic situation on the road network throughout the day. With the simplest set of inputs, users can create a customized query for a specific area or route, specific days and the time periods in the date range that are of interest. The results are computed and a report is made available to view or download within just a few minutes. Even a complicated query containing a large area and a wide date range will never take longer than 24 hours to generate results.

Features	Benefits
Ability to generate detailed output reports	Enables visualization of the results on interactive maps and charts, down to segment-level detail
Accessible 24/7 and creates reports within one day	Allows for rapid analysis at a convenient time
Analyze a route or a specific geographic region	Delivers extensive data coverage providing traffic insights in more than 70 countries
Conduct analysis on complete road network	Delivers route- and segment-based information with statistics about average and median speed; speed limits, street names and road class; speed percentiles and standard deviation; travel time ratio; and, segment sample sizes
Variety of formats available, depending on type of analysis	Gives users the ability to choose the format that works best for them; options include Shape, Excel, and Json files

## Sample applications

Several sample applications for Traffic Stats are illustrated below:

- Measure the stability and reliability of travel times on a route
- Analyze speed on all road segments to determine congestion bottlenecks and their effects
- Measure the travel time before and after a change in the road network to assess the impact
- Detect impact of seasonality, events, and incidents on traffic congestion or density
- Identify and prioritize problematic congestion spots on a route
- Display typical speeds (V85, Average, Median) on a map
- Provide actual driven ground truth speeds and travel time data for use in transportation models

## Types of analysis

### Traffic density

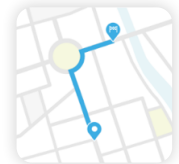
Allows user to focus their analysis on the sample size data only.

### Area and route analysis

Allows user to define a specific route or area which generates average speed, average travel times and sample size (number of probe points for every segment) data.

### How it works

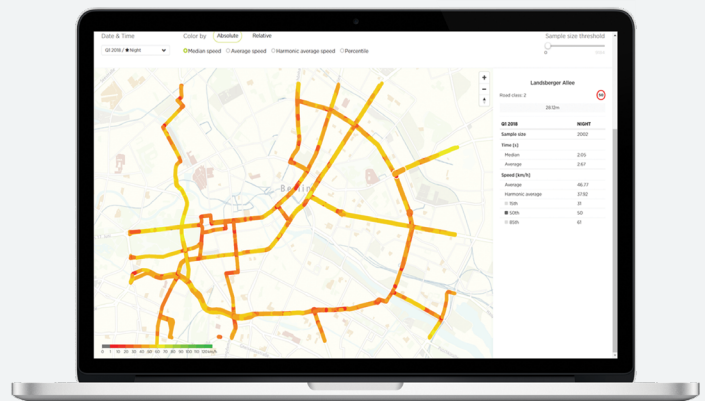
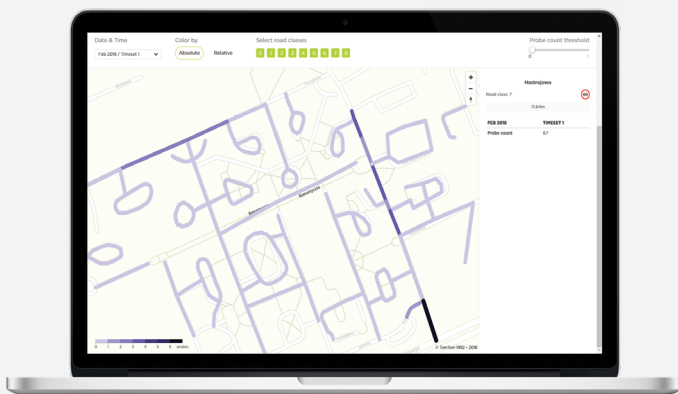
1. Log into the portal @ [move.tomtom.com](https://move.tomtom.com) or via the Traffic Stats API @ [developer.tomtom.com/traffic-stats/documentation/product-information/introduction](https://developer.tomtom.com/traffic-stats/documentation/product-information/introduction)
2. Choose a report type: route or area
3. Select: route or area
4. Choose date(s)
5. Choose time period(s)
6. Analyze results



Route



Area



## TomTom.com

©2024 TomTom. All rights reserved. TomTom and its logo are trademarks of TomTom N.V. or one of its subsidiaries. All other trademarks are the property of their respective owners. TomTom N.V. assumes no responsibility for errors that may appear in this document. Information contained herein is subject to changes without notice.

Contact us  
[tomtom.com/contactus](https://tomtom.com/contactus)

Learn more  
[tomtom.com](https://tomtom.com)  
[developer.tomtom.com](https://developer.tomtom.com)