

TomTom Start Reference Guide

Contents

What's in the box	6
What's in the box	6
Read me first	7
Installing in your car	7
Switching on and off	7
Setting up	7
GPS reception	7
About MyTomTom	8
Setting up MyTomTom	8
Device not starting	9
Charging your device	9
Take care of your navigation device	9
Safety	10
Positioning the mount	10
Safety settings	10
Planning a route	11
Planning a route	11
Route summary	13
Selecting a route type	14
Frequent destinations	14
Show my frequent destinations	15
Using arrival times	15
Navigation menu options	16
Planning a route in advance	17
Viewing route information	18
The Driving view	20
About the Driving View	20
The Driving View	20
Driving View Symbols	21
Advanced lane guidance	22
About lane guidance	22
Using lane guidance	22

Changing your route	24
<hr/>	
Making changes to your route	24
Change route menu	24
View map	26
<hr/>	
About viewing the map	26
View map	26
Options	27
Cursor menu	28
Map corrections	30
<hr/>	
About TomTom Map Share™	30
Correcting a map error	30
Types of map correction	31
Sounds and voices	35
<hr/>	
About sounds and voices	35
About computer voices	35
Selecting a voice	35
Changing the volume level	35
Automatic volume control	36
Settings	37
<hr/>	
About Settings	37
2D/3D settings	37
Advanced settings	38
Battery saving settings	38
Brightness settings	39
Change car symbol	39
Change Home location	39
Change language	39
Change map colours	39
Keyboard settings	40
Make your own menu	40
Manage Favourites	40
Manage POIs	41
Operate left-handed / Operate right handed	42
Planning settings	42
Reset factory settings	42
Safety settings	43
Set clock	43
Set units	43
Show POI on map	43
Speaker settings	43
Start-up settings	44
Status & Information	44

Status bar settings	44
Switch map	45
Turn off voice guidance / Turn on voice guidance	45
Use night colours / Use day colours	45
Voices	46
Volume settings	46
Points of Interest	47
<hr/>	
About Points of Interest	47
Creating POIs	47
Using POIs to plan a route	49
Showing POIs on the map	49
Calling a POI	50
Setting warnings for POIs	50
Manage POIs	51
Help	52
<hr/>	
About getting help	52
Using Help to phone a local service	52
Help menu options	52
Favourites	54
<hr/>	
About Favourites	54
Creating a Favourite	54
Using a Favourite	55
Changing the name of a Favourite	56
Deleting a Favourite	56
Traffic	57
<hr/>	
About RDS-TMC	57
Using traffic information	57
Taking the fastest route	58
Setting the radio frequency for RDS-TMC information	58
Minimising delays	59
Making commuting to work easier	59
Getting more information about an incident	60
Checking traffic incidents in your area	61
Changing traffic settings	62
Traffic incidents	62
Traffic menu	63
Speed cameras	65
<hr/>	
About Speed Cameras	65
Speed camera warnings	65
Changing the way you are warned	66
Speed camera symbols	66

Report button	67
Reporting a new speed camera while on the move	68
Reporting a new speed camera while at home	68
Reporting incorrect camera alerts	68
Types of fixed speed camera you can report	69
Average speed check camera warnings	69
Speed Cameras menu	70
MyTomTom	72
<hr/>	
About MyTomTom	72
Setting up MyTomTom	72
MyTomTom account	73
Customer support	74
<hr/>	
Getting help to use your navigation device	74
Status & information	74
Addendum	75
<hr/>	

What's in the box

What's in the box

- TomTom Start with integrated mount



- USB cable



- USB car charger



- Installation poster
- For devices with a traffic service, there is a car charger with integrated RDS-TMC receiver in the box:



Read me first

Installing in your car

Your TomTom Start navigation device has an integrated mount. See the printed installation poster included with your product for more information.

To install your device, do the following:

1. Make sure that both the integrated mount and your windscreen are clean and dry.
2. Plug the USB car charger into the power supply on your dashboard.
3. Connect the USB cable to the car charger and your TomTom device.
4. Press the suction cup of the mount firmly against the windscreen on an area where the glass is flat.

Important: Place the integrated mount so that it does not interfere with your view of the road or of any of the controls in your car.

5. Twist the rubber grip near the base of the mount in a clockwise direction until you hear a click.

Your navigation device is now installed. The next step is to switch it on and answer a few set-up questions.

Switching on and off

To switch on your navigation device, press and hold the On/Off button until you see the start-up screen. The first time you switch on your device, you have to hold the button down for up to 15 seconds.

Setting up

Important: Take care to select the correct language as the language you choose will be used for all text on the screen.

When you first switch on your device, you have to answer a few questions to set up the device. Answer the questions by tapping the screen.

GPS reception

When you first start your TomTom Start navigation device, the device may need a few minutes to determine your GPS position and show your current position on the map. In future, your position will be found much faster, usually within a few seconds.

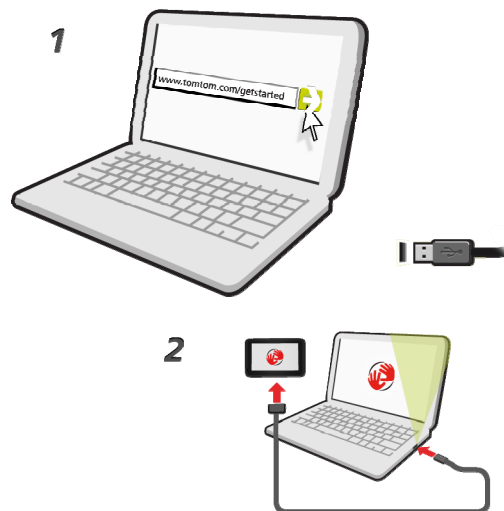
To ensure good GPS reception, you should use your device outdoors. Large objects such as tall buildings can sometimes interfere with reception.

About MyTomTom

MyTomTom helps you manage the contents and services of your TomTom Start navigation device, as well as giving you access to the TomTom community. You log in to MyTomTom on the TomTom website. It is a good idea to frequently connect your navigation device to MyTomTom to ensure you always have the latest updates.

Tip: We recommend using a broadband internet connection whenever you connect your navigation device to MyTomTom.

Setting up MyTomTom



To set up MyTomTom, do the following:

1. Connect your computer to the internet.
2. Start a browser and go to tomtom.com/getstarted.
3. Click **Download now**.

Your browser downloads the MyTomTom support application, which you need to install on your computer in order to connect your device to MyTomTom. Follow the instructions on the screen if you are asked questions while downloading.

4. When prompted, connect your device to your computer using the USB cable. Then switch your device on.

Important: You should plug the USB cable directly into a USB port on your computer and not into a USB hub or USB port on a keyboard or monitor.

Once the MyTomTom support application is installed, you can access MyTomTom from the notification area on your desktop.

Tip: When you connect your navigation device to your computer, MyTomTom tells you if there are any updates for your device.

Device not starting

In rare cases, your TomTom Start navigation device may not start correctly or may stop responding to your taps.

First, check that the battery is charged. To charge the battery, connect your device to the car charger. It can take up to 2 hours to fully charge the battery.

If this does not solve the problem, you can reset the device. To do this, press and hold the On/Off button for 15 seconds and release the button when your device begins to restart.

Charging your device

The battery in your TomTom Start navigation device charges when you connect it to the car charger or to your computer.

Important: You should plug the USB connector directly into a USB port on your computer and not into a USB hub or USB port on a keyboard or monitor.

Take care of your navigation device

Never leave your TomTom Start or accessories on view when you leave the car as they may become an easy target for thieves.

It is important to take care of your device:

- Your device is not designed for use in extreme temperatures and any such exposure may cause permanent damage. Extended exposure to sunlight may lead to early deterioration in battery performance.
- Do not open the casing of your device under any circumstances. Doing so may be dangerous and will invalidate the warranty.
- Wipe or dry the screen of your device using a soft cloth. Do not use any liquid cleaners.

Safety

Positioning the mount

Consider carefully where to attach the mount in your car. The mount should not block or interfere with any of the following:

- Your view of the road
- Any of the controls in your car
- Any of your mirrors
- Any airbags

When your navigation device is in the mount, you should be able to reach the device easily without leaning or stretching. You can attach the mount to the windscreen or side window or you can use a Dashboard Mount Disk to attach the mount to your dashboard. The following diagrams show where you can safely attach the mount.



TomTom also offers alternative mounting solutions for your TomTom navigation device. For more information about Dashboard Mount Disks and alternative mounting solutions, go to tomtom.com/accessories.

Safety settings

We recommend using the safety settings to make your driving as safe as possible.

These are some of the options included in the safety settings:

- Show essential menu buttons while driving
- Show safety reminders
- Warn when driving faster than allowed

If your device supports voice commands, you can also drive more safely by using voice commands to control your navigation device.

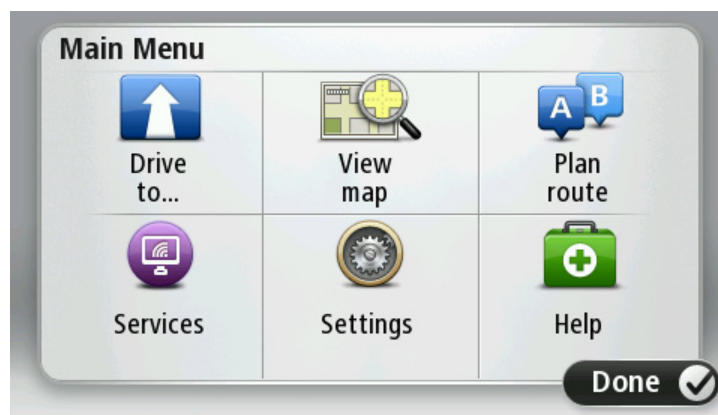
Planning a route

Planning a route

Important: In the interest of safety and to reduce distractions while you are driving, you should always plan a route before you start driving.

To plan a route on your TomTom Start, do the following:

1. Tap the screen to open the Main menu.



2. Tap **Navigate to** or **Drive to**.
3. Tap **Address**.

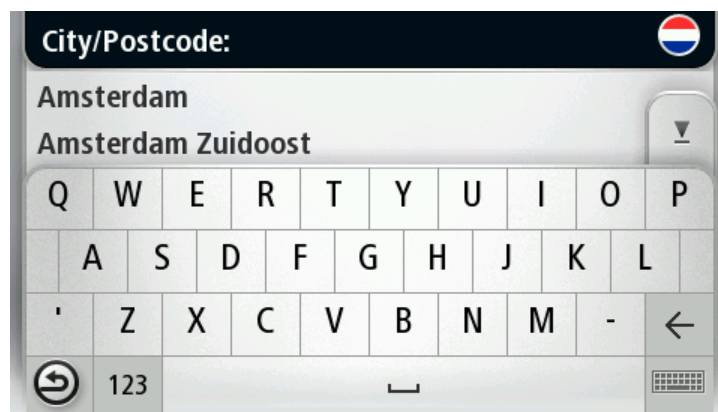
You can change the country or state setting by tapping the flag before you select a city.

4. Enter the town or city name.

Tip: Instead of typing the address, tap the microphone button to enter the address by speaking to your Start.

Towns with similar names are shown in the list while you type.

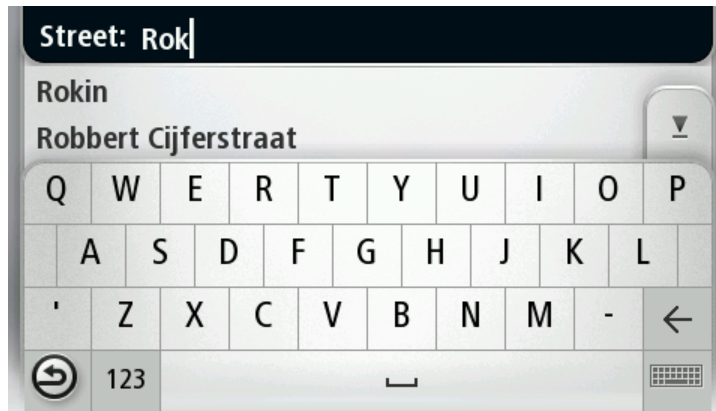
When the correct city or town appears in the list, tap the name to select the destination.



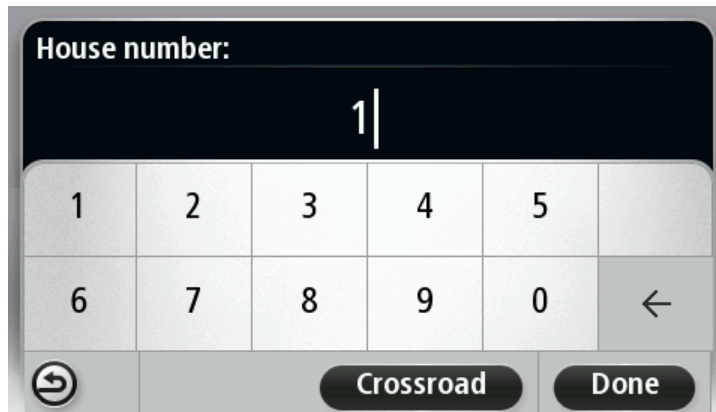
5. Enter the streetname.

Streets with similar names are shown in the list while you type.

When the correct street name appears in the list, tap the name to select the destination.

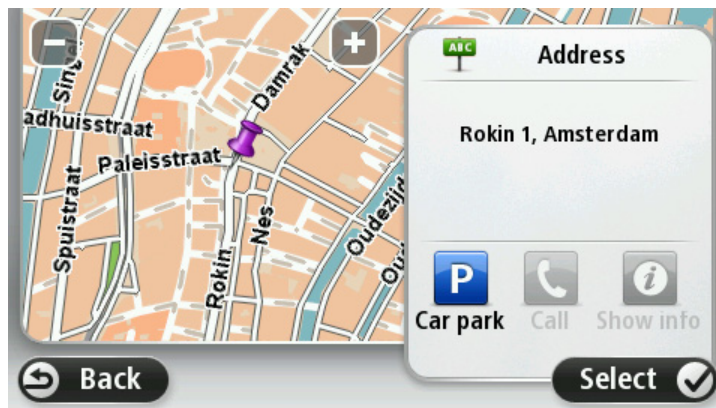


6. Enter the house number, then tap **Done**.



7. The location is shown on the map. Tap **Select** to continue or tap **Back** to enter another address.

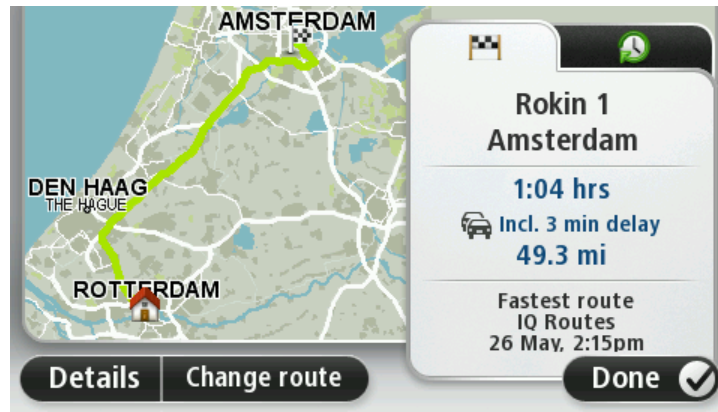
Tip: If you want your final destination to be a car park, tap **Car park** and select a location from the list of car parks close to your general destination.



8. When the new route is shown, tap **Done**.

For more information about the route, tap **Details**.

To plan a different route, tap **Change route**.



Your TomTom Start starts to guide you to your destination, using spoken instructions and on-screen directions.

Route summary

The route summary shows an overview of your route, the remaining distance to your destination and the remaining estimated journey time.

To view the route summary, tap the right-hand panel on the status bar in the Driving view or tap **View route** in the Main menu and then tap **Show route summary**.

If you have a TomTom Traffic service or an RDS-TMC receiver, the route summary also shows traffic information about delays on your route.



Selecting a route type

Every time you plan a route, you can choose to be asked about the type of route you want to plan. To do this, tap **Settings** followed by **Planning settings** and then tap **Ask me every time I plan**.



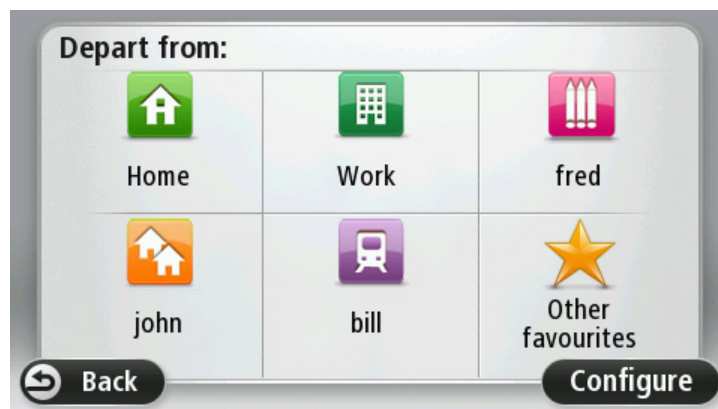
The types of route you can choose from are as follows:

- **Fastest route** - the route which takes the least time.
- **Eco route** - the most fuel-efficient route for your journey.
- **Shortest route** - the shortest distance between the locations you set. This may not be the quickest route, especially if the shortest route is through a town or city.
- **Avoid motorways** - a route which avoids motorways.
- **Walking route** - a route designed for making the journey on foot.
- **Bicycle route** - a route designed for making the journey on a bicycle.

Frequent destinations

If you often make trips to the same destinations, you can set your TomTom Start to ask if you want to plan a route to one of these locations every time the device starts. This is faster than planning a route in the normal way.

To select a new destination, tap **Start-up settings** in the Settings menu and select **Ask for a destination**. Select a button to use for this destination and answer the questions about the destination.



Show my frequent destinations

You can set your TomTom Start to ask if you want to plan a route to one of your frequently visited destinations every time the device starts.

To change this setting, do the following:

1. Tap **Start-up settings** in the Settings menu and then select **Ask for a destination**.
2. Tap **Yes**, then tap **Yes** again to begin entering information about the destination.
3. Select a symbol for the destination and tap **Done** to set the symbol, then tap **Yes**.

Tip: To add new destinations, select one of the numbered symbols and enter a name for the new destination button.

4. Tap **Yes** and if required enter a new name, then tap **Done**.
5. Enter the address details in the same way you enter an address when planning a route, then tap **Done**.
6. If you want to set more destinations, repeat the steps above. Otherwise, tap **Done**.
7. You are asked if you want to change the start-up image.
8. If you want to change the image, tap **Yes** then follow the instructions shown on the screen. Otherwise, tap **No**.

Every time your TomTom Start starts, you are asked if you want to plan a route. If you tap **Cancel**, you are shown the Main Menu.

Using arrival times

When you plan a route, your TomTom Start asks you if you need to arrive at a particular time.

Tap **YES** to enter a preferred arrival time. Your Start calculates your arrival time and shows you whether you will arrive on time.

You can also use this information to work out when you need to leave. If your Start shows that you will arrive 30 minutes early, you can wait and leave in 30 minutes time, rather than arrive early.

Your arrival time is constantly recalculated during your journey. The status bar shows whether you will arrive on time or if you are going to be late, as shown below:



You will arrive 55 minutes before the arrival time you entered.

If the estimated arrival time is more than five minutes before the time you entered, it is shown in green.



You will arrive 3 minutes before the arrival time you entered.

If the estimated arrival time is less than 5 minutes before the time you entered, it is shown in yellow.



You will arrive 19 minutes late.

If the estimated arrival time is later than the time you entered, it is shown in red.



Tap **Status bar settings** in the Settings menu, to enable or disable arrival time notifications.

To enable arrival time notifications, select **Leeway**.

Status bar settings

Navigation menu options

When you tap **Navigate to** or **Drive to**, you can set your destination in many ways, not just by entering the address. The other options are listed below:



Home

Tap this button to navigate to your Home location.

You will probably use this button more than any other.



Favourite

Tap this button to select a Favourite as your destination.



Address

Tap this button to enter an address as your destination.



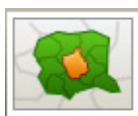
Recent destination

Tap this button to select your destination from a list of places you have recently used as destinations.



Point of Interest

Tap this button to navigate to a Point of Interest (POI).



Postcode

Tap this button to enter a postcode as a destination.

In some countries, the postcode can be used to identify the place and street. In other countries, the postcode only identifies the place, so you need to enter the street name separately.



Point on map

Tap this button to select a point on the map as your destination using the map browser.



Tap this button to enter a destination using latitude and longitude values.

Latitude Longitude



Tap this button to select your last recorded position as your destination.

Position of last stop

Planning a route in advance

You can use your TomTom Start to plan a route in advance, selecting your starting point and your destination.

Here are some more reasons to plan a route in advance:

- Find out how long a journey is going to take before you start.
- You can also compare journey times for the same route at different times of the day or on different days of the week. Your Start uses IQ Routes when planning a route. IQ Routes calculates routes based on the real average speeds measured on roads.
- Study the route of a journey you are planning.
- Check a route for someone who is coming to visit you and then explain the route to them in detail.

To plan a route in advance, follow these steps:

1. Tap the screen to bring up the Main menu.
2. Tap the arrow button to move to the next menu screen and tap **Plan route**.



This button is shown while there is no planned route on your Start.

3. Select the starting point for your journey in the same way that you would select your destination.
 4. Set the destination for your journey.
 5. If Planning settings are set to **Ask me every time I plan**, select the type of route you want to plan:
 - **Fastest route** - the route which takes the least time.
 - **Eco route** - the most fuel-efficient route for your journey.
 - **Shortest route** - the shortest distance between the locations you set. This may not be the quickest route, especially if the shortest route is through a town or city.
-

- **Avoid motorways** - a route which avoids motorways.
- **Walking route** - a route designed for making the journey on foot.
- **Bicycle route** - a route designed for making the journey on a bicycle.

6. Choose the date and time that you will make the journey you are planning.

Your Start uses IQ Routes to work out the best possible route at that time. This is useful to see how long a journey takes at different times of the day or on different days of the week.

Your TomTom Start plans the route between the two locations you selected.

Viewing route information

You can access these options for the route you last planned by tapping **View route** in the Main Menu or the **Details** button on the route summary screen.

You can then select from the following options:



Tap this button for a list of all the turn instructions on the route.
This is very useful if you need to explain a route to someone else.

Show instructions



Tap this button to see an overview of the route using the map browser.

Show map of route



Tap this button to watch a demo of the journey. You can interrupt the demo at any time by tapping the screen.

Show route demo



Tap this button to open the route summary screen.

Show route summary



Tap this button to see a preview of your destination.

You can navigate to a car park near your destination, and view any available information about your destination, for example, the phone number.

Show destination



**Show traffic on
route**

Tap this button to see all the traffic incidents on your route.

Note: This button is only shown if your device has either a traffic subscription or an RDS-TMC Receiver connected. Traffic information is not available in all countries or regions. For more information about TomTom traffic information services, go to [tomtom.com/services](https://www.tomtom.com/services).

The Driving view

About the Driving View

When your TomTom Start device starts for the first time, you are shown the Driving View along with detailed information about your current position.

Tap the centre of the screen at any time to open the Main Menu.

You can choose the screen shown when you switch on your device by tapping **Settings** in the Main Menu, then tapping **Start-up settings**.

The Driving View



1. Zoom button - tap the magnifying glass to show buttons for zooming in and out.
2. Quick menu - to enable the quick menu, tap **Make your own menu** in the Settings menu.
3. Your current position.
4. Road sign information or the next street name.
5. Traffic sidebar. Tap the sidebar to open the Traffic menu.

The traffic sidebar is only shown if your device has either a traffic subscription or an RDS-TMC Receiver connected. Traffic information is not available in all countries or regions.

6. Battery level indicator.
7. The time, your current speed and the speed limit, if known. To see the difference between your preferred arrival time and your estimated arrival time, check the **Leeway** checkbox in the Status bar settings.

Tap this part of the status bar to switch between a 3D map and a 2D map.

8. The name of the street you are on.
9. Navigation instruction for the road ahead and the distance to next instruction. If the second instruction is less than 150m after the first instruction, you see it shown immediately instead of the distance.

Tap this part of the status bar to repeat the last voice instruction and to change the volume. You can also tap here to mute the sound.

10. The remaining journey time, the remaining distance and your estimated arrival time.

Tap this part of the status bar to open the Route Summary screen.

To change the information shown in the status bar, tap **Status bar** in the Settings menu.

Driving View Symbols



Sound muted - this symbol is shown when the sound has been muted.

To turn the sound back on, tap the middle panel in the status bar.



Battery - this symbol is shown when the battery level is low.

When you see this symbol, you should charge your navigation device as soon as possible.



Connected to computer - this symbol is shown when your navigation device is connected to your computer.

Advanced lane guidance

About lane guidance

Note: Lane guidance is not available for all junctions or in all countries.

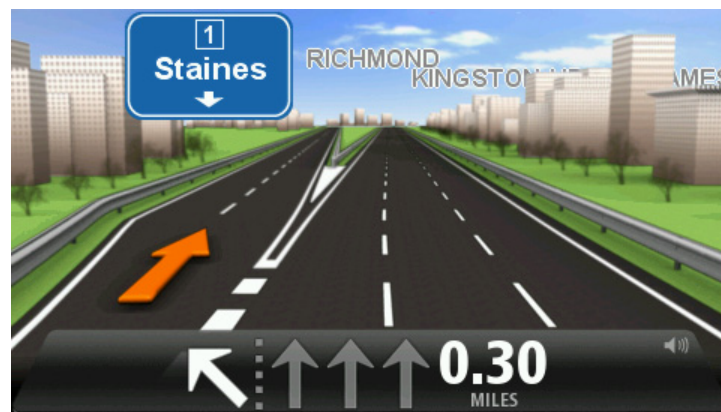
Your TomTom Start helps you prepare for motorway exits and junctions by showing the correct driving lane for your planned route.

As you approach an exit or junction, the lane you need is shown on the screen.

Using lane guidance

There are two types of lane guidance:

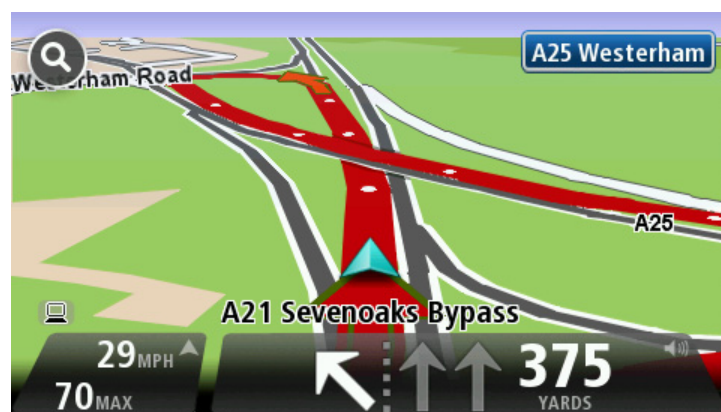
- Lane images



To turn lane images off, tap **Settings** in the Main Menu, then tap **Advanced settings**. Clear the checkbox for **Show lane images**.

Tip: Tap anywhere on the screen to return to the Driving View.

- Instructions in the status bar



Tip: If no lane guidance is shown in the status bar and all lanes are highlighted, you can use any lane.

Changing your route

Making changes to your route

After you plan a route, you may want to change the route or even the destination. There are various ways to change your route without the need to completely replan the entire journey.

To change the current route, tap **Change route** in the Main menu:



Tap this button to change the current route.

This button is only shown while there is a planned route on your Start.

Change route

Change route menu

To change the current route or your destination, tap one of the following buttons:



Calculate alternative

Tap this button to find an alternative to the current route.

This button is only shown while there is a planned route on your Start.

This is a simple way to search for a different route to your current destination.

Your Start calculates a new route from your current location, to reach your destination using completely different roads.

The new route is shown next to the original route so that you can select the route you want to use.



Avoid roadblock

Tap this button while driving on a planned route, to avoid a roadblock or traffic congestion on the road ahead.

Your Start will suggest a new route which avoids the roads on your current route for the selected distance.

If the roadblock or traffic congestion suddenly clears, tap Recalculate route to replan your original route.

Important: Be aware that when a new route is calculated, you might immediately be asked to turn off the current road.



Minimise delays

Tap this button to avoid traffic delays on a planned route.

It is not always possible to avoid all traffic delays. Your Start will check for traffic delays on your route and calculate the best route to avoid all or most of the delays.

Note: This button is only shown if your device has either a traffic subscription or an RDS-TMC Receiver connected. Traffic information is not available in all countries or regions. For more information about TomTom traffic information services, go to tomtom.com/services.



Change destination

Tap this button to change the current destination.

When you change the destination, you are shown the same options and asked to enter the new address in the same way as when you plan a new route.



Avoid part of route

Tap this button to avoid part of the current route.

You are shown a list of the street names on your route. When you tap one of the street names, your Start calculates a detour to avoid the selected street. The route summary shows both the new route and your original route. Tap the panel on the right to select one of the routes and then tap **Done**.

If you do not want to use either of the routes shown in the route summary, tap **Change route** to find another way to change your route.



Travel via...

Tap this button to change your route by selecting a location you want to travel past, maybe so you can meet someone on the way.

When you select a location to travel past, you are shown the same options and asked to enter the new address in the same way as when you plan a new route.

Your Start calculates the route to your destination via the selected location.

The selected location is shown on the map using a marker.

Unlike the warning which is given when you reach your destination, no warning is given when you travel past a marked location.

View map

About viewing the map

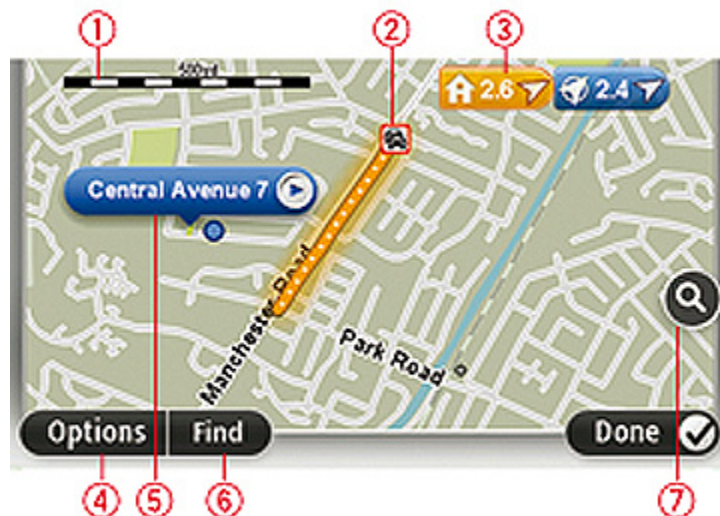
You can view the map in the same way as you might look at a traditional paper map. The map shows your current location and many other locations such as Favourites and POIs.

To view the map in this way, tap **View map** or **View route** in the Main menu.

You view different locations on the map by moving the map across the screen. To move the map, touch the screen and drag your finger across the screen. If your device supports gestures, you can also zoom in and out by touching the screen with your thumb and forefinger and sliding your fingers in and out.

To select a location on the map, tap the location on the map. The cursor highlights the location and displays useful information about the location in an information panel. Tap the information panel to create a Favourite or plan a route to that location.

View map



1. The scale bar
2. Traffic - current traffic incidents. Use the Options button to select whether traffic information is shown on the map. When traffic information is shown on the map, POIs and Favourites are not shown.

Note: To use a TomTom traffic information service, you may need a subscription or a receiver. Traffic services are not supported in all countries. For more information and to subscribe, visit tomtom.com/services.

3. Marker

Markers point to your current location (blue), your home location (yellow) and your destination (red). The marker shows the distance to the location.

Tap a marker to centre the map on the location pointed to by the marker.

You can also set your own marker. Tap the cursor button, then tap **Set marker position** to place a green marker at the cursor position.

To turn markers off, tap **Options**, then **Advanced** and clear the **Markers** checkbox.

4. Options button

5. The cursor with street name balloon

Tap the button in the street name balloon to open the cursor menu. You can navigate to the cursor position, make a Favourite of the cursor position, or find a Point of Interest near the cursor position.

6. The Find button

Tap this button to find specific addresses, favourites or Points of Interest.

7. The zoom bar

Zoom in and out by moving the slider.

Options

Tap the **Options** button to set the information shown on the map and show the following information:

- **Traffic** - select this option to show traffic information on the map. When traffic information is shown, POIs and Favourites are not shown.

Note: To use a TomTom traffic information service, you may need a subscription or a receiver. Traffic services are not supported in all countries or regions. For more information and to subscribe, visit tomtom.com/services.

- **Names** - select this option to show street and city names on the map.
- **Points of interest** - select this option to show POIs on the map. Tap **Choose POI** to choose which POI categories are shown on the map.
- **Images** - select this option to show satellite images of the area being viewed. Satellite images are not available in every map or for every location on the map.
- **Favourites** - select this option to show your Favourites on the map.

Tap **Advanced** to show or hide the following information:

- **Markers** - select this option to enable markers. Markers point to your current location (blue), your home location (yellow) and your destination (red). The marker shows the distance to the location.

Tap a marker to centre the map on the location which the marker is pointing to.

To create your own marker, tap the cursor button. Then tap **Set marker position** to place a green marker at the cursor position.

To disable markers, tap **Options**, then tap **Advanced** and unselect **Markers**.

- **Coordinates** - select this option to show GPS coordinates in the lower left corner of the map.

Cursor menu

The cursor can be used to do more than highlight a location on the map.

Position the cursor on a location on the map, then tap **Cursor** and then tap one of the following buttons:



Tap this button to plan a route to the cursor position on the map.

Navigate there



Tap this button to view information about the location on the map such as the address.

View location



Tap this button to create your own green marker and place it at the cursor position.

If a green marker exists, this button changes to **Delete marker**.

Set marker position



Tap this button to find a POI near the cursor position on the map.

For example, if the cursor currently highlights a restaurant location on the map, you can search for a nearby parking garage.

Find POI nearby



Tap this button to make a map correction for the cursor position on the map.

You can make the correction only on your own map or you can share the correction with the TomTom Map Share community.

Correct location



Tap this button to create a Favourite at the cursor position on the map.

Add as Favourite



Tap this button to create a POI at the cursor position on the map.

Add as POI



Tap this button to travel via the cursor position on the map as part of your current route. Your destination remains the same as before, but your route now includes this location.

Travel via...

This button is only available while there is a planned route.



Tap this button to centre the map on the cursor position.

Centre on map

Map corrections

About TomTom Map Share™

TomTom Map Share helps you correct map errors. You can correct several types of map error.

To make corrections to your own map, tap **Map corrections** in the Services menu.

Note: TomTom Map Share is not available in all regions. For more information, go to tomtom.com/mapshare.

Correcting a map error

Important: For safety reasons, do not enter the full details of a map correction while you are driving. Mark the location of the map error instead and enter the full details later.

To correct a map error, do the following:

1. Tap **Map corrections** in the Services menu.



2. Tap **Correct a map error**.
3. Select the type of map correction you want to report.
4. Select how you want to select the location.
5. Select the location. Then tap **Done**.
6. Enter the details of the correction. Then tap **Done**.
7. Tap **Send**.

The correction is saved.

Types of map correction

To make a correction to your map, tap **Map corrections** in the Services menu, then tap **Correct a map error**. There are several types of map correction available.



(Un)block street

Tap this button to block or unblock a street. You can block or unblock the street in one or both directions.

For example, to correct a street near to your current location, do the following:

1. Tap **(Un)block street**.
2. Tap **Near you** to select a street near your current location. You can select a street by name, a street near your Home location or a street on the map.
3. Select the street or section of a street you want to correct by tapping it on the map.

The street you select is highlighted and the cursor shows the name of the street.

4. Tap **Done**.

Your device shows the street and whether the traffic is blocked or allowed in each direction.



5. Tap one of the direction buttons to block or unblock the flow of traffic in that direction.

6. Tap **Done**.



Reverse traffic direction

Tap this button to correct the traffic direction of a one-way street, where the direction of traffic is different to the direction shown on your map.

Note: Reverse traffic direction only works for one-way streets. If you select a two-way street you will be given the chance to block/unblock the street rather than changing the direction.



Edit street name

Tap this button to change the name of a street on your map.

For example, to rename a street near to your current location:

1. Tap **Edit street name**.
2. Tap **Near you**.
3. Select the street or section of a street you want to correct by tapping it on the map.

The street you select is highlighted and the cursor shows the name of the street.

4. Tap **Done**.
5. Type the correct street name.
6. Tap **Done**.



Change turn restrictions

Tap this button to change and report incorrect road turn restrictions.



Change road speed

Tap this button to change and report the road speed limit.



Add or remove roundabout

Tap this button to add or remove a roundabout.



Add missing POI

Tap this button to add a new Point of Interest (POI).

For example to add a new restaurant near to your current location:

1. Tap **Add missing POI**.
2. Tap **Restaurant** in the list of POI categories.
3. Tap **Near you**.
4. Select the location of the missing restaurant.

You can select the location by entering the address or by selecting the location on the map. Select **Near you** or **Near home** to open the map at your current location or at your Home location.

5. Tap **Done**.
6. Type the name of the restaurant then tap **OK**.
7. If you know the telephone number of the restaurant you can type it, then tap **OK**.

If you don't know the number, just tap **OK** without typing a number.



Edit POI

Tap this button to edit an existing POI.

You can use this button to make the following changes to a POI:

- Delete the POI.
 - Rename the POI.
 - Change the telephone number of the POI.
 - Change the category that a POI belongs to.
 - Move the POI on the map.
-



Comment on POI

Tap this button to enter a comment about a POI. Use this button if you cannot edit the error with the POI using the **Edit POI** button.



Correct house number

Tap this button to correct the location of a house number. Enter the address that you wish to correct and then indicate on the map the correct location of that house number.



Existing street

Tap this button to edit an existing street. Once you have selected the street, you can select an error to report. You can select more than one type of error for a street.



Tap this button to report a missing street. You have to select the start and end points of the missing street.

Missing street



City

Tap this button to report an error about a city, town or village. You can report the following types of error:

- City is missing
- Wrong city name
- Alternative city name
- Other



Motorway entrance/exit

Tap this button to report an error about a motorway entrance or exit.



Postcode

Tap this button to report an error about a postcode.



Other

Tap this button to report other types of corrections.

These corrections are not immediately applied to your map but are saved in a special report.

You can report missing streets, errors in motorway entrances and exits and missing roundabouts. If the correction you want to report is not covered by any of these report types, enter a general description then tap Other.

Sounds and voices

About sounds and voices

Your TomTom Start uses sound for some or all of the following:

- Driving directions and other route instructions
- Traffic information

Note: To use a TomTom traffic information service, you may need a subscription or a receiver. Traffic services are not supported in all countries. For more information and to subscribe, visit tomtom.com/services.

Warnings that you set There are two types of voice available for your Start:

- Computer voices
Computer voices are generated by your Start. They provide route instructions and read aloud city and street names, traffic and other useful information.
- Human voices
These are recorded by an actor and only provide route instructions.

About computer voices

Your TomTom Start uses text-to-speech technology and computer voices to read the street names on your map as it guides you on your route.

The computer voice analyses the whole phrase or sentence before speaking, to ensure that the sentence sounds as close as possible to natural speech.

Computer voices can recognise and pronounce foreign towns and street names. For example, the English computer voice can read and pronounce French street names.

Selecting a voice

To select a different voice on your TomTom Start, tap **Voices** in the Settings menu. Then tap **Change voice** and select the required voice.

Changing the volume level

You can change the volume on your TomTom Start in several ways.

- In the Driving view.
Tap the central panel on the status bar and move the slider to adjust the volume. The last route instruction is played so you can hear the new volume level.

- In the Settings menu.

Tap **Settings** in the Main menu, then tap **Volume settings** and move the slider to adjust the volume. Tap **Test** to listen to the new volume level.

Automatic volume control

To set your TomTom Start to automatically adjust the volume, do the following:

1. Tap **Settings** in the Main menu.
2. Tap **Volume settings**.
3. Select **Link volume to car speed** to automatically adjust the volume inside the car in response to changes in the speed of your driving.
4. Tap **Done**.

Settings

About Settings

You can change the way your TomTom Start looks and behaves. Most of the settings on your device can be accessed by tapping **Settings** in the Main Menu.

2D/3D settings



2D/3D settings

Tap this button to set the default view of the map. To switch between 2D and 3D views while driving, tap the centre part of the status bar in Driving View.

It is sometimes easier to view the map from above, such as when navigating a complex road network.

The 2D view shows a two dimensional view of the map as though viewed from above.

The 3D view shows a three dimensional view of the map as though you are driving through the landscape.

The following buttons are available:

- **In 2D view: rotate map in direction of travel** - tap this button so the map is rotated automatically with the direction you are travelling always at the top.
- **Switch to 3D view when following a route** - tap this button to show the map automatically in 3D view when you are following a route.

Advanced settings



Tap this button to select the following advanced settings:

Advanced settings

- **Show house number before street name** - when this setting is selected, addresses are shown with the house number followed by the streetname, such as 10 Downing Street.
- **Show street names** - when this setting is selected, street names are shown on the map in the Driving View. You do not need to select this option when your Start is set to read aloud street names using a computer voice.
- **Show next street name** - when this setting is selected, the name of the next street on your route is shown at the top of the Driving view.
- **Show current street name on map** - when this setting is selected, the name of the street you are on is shown at the bottom of the Driving view.
- **Show location preview** - when this setting is selected, a graphical preview of your destination is shown during route planning.
- **Enable automatic zooming in 2D view**
- **Enable automatic zooming in 3D view**
- **Show lane images** - when this setting is selected, a graphical view of the road ahead shows which lane you need when you approach a junction or motorway exit. This feature is not available for all roads.
- **Automatically adjust clock for time zone**

Battery saving settings



Battery saving settings

To change the power saving settings, tap this button on your Start.

Brightness settings



Brightness settings

Tap this button to set the brightness of the screen. Move the sliders to adjust the brightness level.

To view the map and menus in day or night colours, tap **Use day colours** or **Use night colours** in the Settings menu.

Change car symbol



Change car symbol

Tap this button to select the car symbol that shows your current location in the Driving view.

Change Home location



Change Home location

Tap this button to set or change your Home location. You enter the address in the same way as you do when you plan a route.

Your Home location provides an easy way to plan a route to an important location.

For most people, your Home location will be your home address. However, you might prefer to set the location to another regular destination, such as your workplace.

Change language



Change language

Tap this button to change the language used for all the buttons and messages you see on your Start.

You can choose from a wide range of languages. When you change the language, you are also given the opportunity to change the voice.

Change map colours



Change map colours

Tap this button to select the colour schemes for day and night map colours.

Tap **Search** to search for a colour scheme by typing the name.

Keyboard settings



Keyboard settings

Tap this button to select the keyboards that will be available for your use and the layout of the Latin keyboard.

You use the keyboard to enter names and addresses, such as when you plan a route or search for the name of a town or a local restaurant.

Make your own menu



Make your own menu

Tap this button to add up to six buttons to your own personalised menu.

If there are only one or two buttons in your menu, both buttons are shown in the Driving view.

If you have three or more buttons in your menu, then a single button is shown in the Driving view which opens your menu when tapped.

Manage Favourites

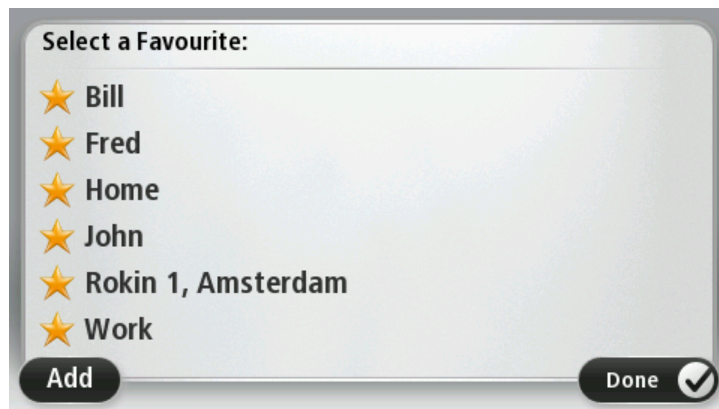


Manage Favourites

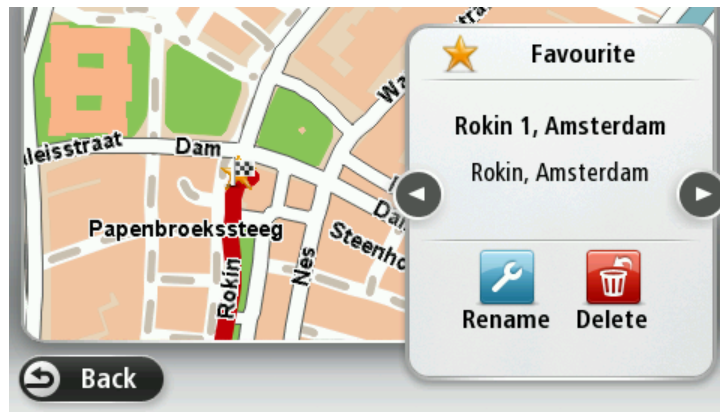
Tap this button to add, rename or delete Favourites.

Favourites provide an easy way to select a location without the need to enter the address. They do not need to be favourite places, they can simply be seen as a collection of useful addresses.

To create a new Favourite, tap **Add**. Then enter the location address in the same way that you enter an address when you plan a route.



To view or change an existing Favourite, tap one of the items in the list. To see more Favourites on the map, tap the left or right buttons.



Manage POIs



Manage POIs

Tap this button to manage your own Point of Interest (POI) categories and locations.

You can set your Start to let you know when you are near to selected POI locations. For example, you could set the device to let you know when you are approaching a petrol station.

You can create your own POI categories and add your own POI locations to these categories.

You can, for example, create a new POI category called Friends. You could then add all your friends' addresses as POIs in this new category.

Tap the following buttons to create and maintain your own POIs:

- **Add POI** - tap this button to add a location to one of your own POI categories.
- **Warn when near POI** - tap this button to set your Start to warn you when you are near selected POIs.
- **Delete POI** - tap this button to delete one of your own POI categories.
- **Edit POI** - tap this button to edit one of your own POIs.
- **Add POI category** - tap this button to create a new POI category.
- **Delete POI category** - tap this button to delete one of your own POI categories.

Operate left-handed / Operate right handed



Operate left-handed / Operate right-handed

Tap this button to make it easier for right- or left-handed operation. This will affect items such as the zoom bar when you are viewing the map.

Planning settings



Planning settings

Tap this button to set the way your TomTom Start calculates the routes that you plan.

Set the type of route you want your Start to calculate.

Tap **IQ Routes** to set if you want the device to use IQ Routes information to help find the best route.

Set whether you want your Start to replan the current route if a faster route is found while you are driving. This is useful if traffic builds up or clears, further ahead on your route.

Set whether you want to be warned if your route passes through an area where your map contains only limited information.

Set how your Start should manage toll roads and ferry crossings when the device calculates a route.

Set whether you want the route summary screen to close automatically after you plan a route. If you select **No**, then you will need to tap **Done** to close the route summary screen every time you plan a route.

Reset factory settings



Reset factory settings

Tap this button to delete all your personal settings and restore the standard factory settings to your TomTom Start.

This is not a software update and will not affect the version of the software application installed on your Start.

Important: This feature deletes all your personal settings!

If you want to keep your personal information and settings, you should perform a full backup of your Start before you reset the device. You can then restore all your personal information and settings after you reset the device.

This includes items such as your Home and Favourite locations, your personal menu and your POI categories and POI locations.

Safety settings



Safety settings

Tap this button to select the safety features you want to use on your TomTom Start.

Set clock



Set clock

Tap this button to select the time format. As soon as you have a GPS fix, the time will be set automatically. If you don't have a GPS fix, you can choose to set the time manually.

Set units



Set units

Tap this button to set the units used on your Start for features such as route planning and weather reports.

Show POI on map



Show POI on map

Tap this button to select the types of Point of Interest (POI) you want to see on the map.

1. Tap **Show POI on map** in the Settings menu.
2. Select the POI categories you want to be shown on the map.
3. Tap **Search** and use the keyboard to search for a category name.
3. Select whether you want POIs to be shown in 2D or 3D views of the map.
4. Tap **Done**.

Point of Interest locations are shown on the map as symbols.

Speaker settings



Speaker settings

Tap this button to select the loudspeaker or loudspeaker connections that are used on your TomTom Start.

Start-up settings



Tap this button to set what happens when your TomTom Start starts.

Start-up settings

Status & Information



Status & Information

Tap this button to find technical information on your TomTom Start, such as the device serial number, application version and the map version.

You can also view the current status for GPS reception.

Status bar settings



Status bar settings

Tap this button to select the information you want to see on the status bar:

- **Horizontal** - show the status bar at the bottom of the Driving view.
- **Vertical** - show the status bar on the right-hand side of the Driving view.
- **Maximum speed**

Important: The speed limit is shown next to your current speed and your speed is shown in red, if you drive faster than the speed limit.

Information about speed limits is not available for all roads.

- **Current time**
- **Remaining distance** - the distance to your destination.
- **Leeway** - your Start shows how late or early you will arrive, compared with your preferred arrival time that was set when you planned the route.

Switch map



Switch map

Tap this button to select the map you want to use for route planning and navigation.

Although you can store more than one map on the device, you can only use one map at a time for planning and navigation.

To switch from the current map to plan a route in another country or region, simply tap this button.

Note: The first time you switch to a map, you may need to connect to your MyTomTom account and activate the map.

Turn off voice guidance / Turn on voice guidance



Turn off Voice guidance

Tap this button to switch off voice guidance. You will no longer hear spoken route instructions but you will still hear information such as traffic information and warnings.

Voice guidance is also switched off if you tap **Turn off sound** in the Settings menu.

Note: If you change the voice on your Start, then voice guidance is automatically switched on for the new voice.



Turn on Voice guidance

Tap this button to switch on voice guidance and hear spoken route instructions.

Use night colours / Use day colours



Use night colours

Tap this button to reduce the brightness of the screen and display the map in darker colours.

When driving at night or when driving through a dark tunnel, it is easier to view the screen and less distracting for the driver if the brightness of the screen is dimmed.

Tip: Your Start can switch between day and night colours depending on the time of day. To automatically switch between night and day colours, tap **Brightness settings** in the Settings menu and select **Switch to night colours when dark**.



Use day colours

Tap this button to increase the brightness of the screen and display the map in brighter colours.

Voices



Change voice

Tap this button to change the voice that gives spoken directions and other route instructions.

A wide range of voices are available. There are computer voices which can read street names and other information directly from the map and there are human voices which have been recorded by actors.



Voice settings

Tap this button to set the type of spoken directions and other route instructions your TomTom Start will read aloud.

Volume settings



Volume settings

Tap this button to set the volume level for your TomTom Start. Move the slider to change the volume.

Points of Interest

About Points of Interest

Points of Interest or POIs are useful places on the map.

Here are some examples:

- Restaurants
- Hotels
- Museums
- Parking garages
- Petrol stations

Creating POIs

Tip: For help on managing third party POIs, see: tomtom.com/13814

1. Tap the screen to open the Main Menu.
2. Tap **Settings**.
3. Tap **Manage POIs**.
4. If there are no POI categories or the one you want to use does not exist, tap **Add POI category** and create a new category.



Every POI must be assigned to a POI category. This means you need to have created at least one POI category before you can create your first POI.

You can only add POIs to POI categories you have created.

For more information on creating POI categories, read **Managing POIs**.

5. Tap **Add POI**.
6. Select the POI category you want to use for the new POI.
7. Tap a button to enter the POI address in the same way that you plan a route.

The POI is created and saved in the selected category.



Home

Tap this button to set your Home location as a POI.

This is useful if you decide to change your Home location, but first want to create a POI using the current Home address.



Favourite

Tap this button to create a POI from a Favourite.

You might want to create a POI from a Favourite because you can only create a limited number of Favourites. If you want to create more Favourites you need to delete some Favourites. To avoid losing a Favourite, save the location as a POI before you delete the Favourite.



Address

Tap this button to enter an address as a new POI.

When you enter an address, you can choose from four options.

- **City centre**
 - **Street and house number**
 - **Postcode**
 - **Crossing or intersection**
-



Recent destination

Tap this button to select a POI location from a list of places you have recently used as destinations.



Point of Interest

Tap this button to add a Point of Interest (POI) as a POI.

For example, if you are creating a category of POIs for your favourite restaurants, use this option instead of entering the addresses of the restaurants.



My location

Tap this button to add your current location as a POI.

For example, if you stop somewhere interesting, you can tap this button to create a new POI at the current location.



Point on map

Tap this button to create a POI using the map browser.

Use the cursor to select the location of the POI, then tap **Done**.



Latitude Longitude

Tap this button to create a POI by entering latitude and longitude values.



Position of last stop

Tap this button to select the location where your Start was last docked.

Using POIs to plan a route

When you plan a route, you can use a POI for the destination.

The following example shows how to plan a route to a car park in a city:

1. Tap **Navigate to** or **Drive to** in the Main menu.
2. Tap **Point of Interest**.
3. Tap **POI in city**.

Tip: The last POI you viewed on your Start is also shown in the menu.

4. Enter the name of the town or city and select it when it is shown in the list.
5. Tap the arrow button to expand the list of POI categories.

Tip: If you already know the name of the POI you want to use, you can tap **Search POI** to enter the name and select this location.

6. Scroll down the list and tap **Car park**.
7. The car park closest to your destination is shown at the top of the list.
8. The following table explains the distances shown next to each POI. How the distance is measured varies depending on how you initially searched for the POI:
 - POI near you - distance from your current location
 - POI in city - distance from the city centre
 - POI near Home - distance from your Home location
 - POI along route - distance from your current location
 - POI near destination - distance from your destination
9. Tap the name of the car park you want to use and tap **Done** when the route has been calculated.

Your TomTom Start starts to guide you to the car park.

Showing POIs on the map

You can select the types of POI locations you want to see on your maps.

1. Tap **Show POI on map** in the Settings menu.
2. Select the categories you want to be shown on the map.
3. Tap **Done**.
4. Select whether you want to see POI locations in 2D and 3D views of the map.
5. Tap **Done**.

The types of POI you have selected are shown as symbols on the map.

Calling a POI

Many of the POIs on your TomTom Start include phone numbers. This means that you can use your Start to find out the phone number for a POI, call them using a phone and then plan a route to the location of the POI.

For example, you can search for a cinema, call to book a ticket and then plan a route to the cinema.

1. Tap **Navigate to** or **Drive to** in the Main Menu.
2. Tap **Point of Interest**.
3. Select how you want to search for the POI.

For example, if you want to search for a POI on your route, tap **POI along route**.

4. Tap the type of POI you want to navigate to.

For example, if you want to call a cinema to reserve a ticket, tap **Cinema** and then select the name of the cinema you want to call. Then tap **Show info** to see the phone number.

5. Call the POI on a phone to, for example, reserve tickets or check their opening hours.
6. Tap **Select**.

Your Start starts navigating to the POI.

Setting warnings for POIs

You can set a warning sound or message to be played or displayed when you approach a selected type of POI, such as a petrol station.

The following example will show how to set a warning sound to be played when you are 250 metres from a petrol station.

1. Tap **Manage POIs** or **Warn when near POI** in the settings menu.
2. Scroll down the list and tap **Petrol station**.

Tip: To remove a warning, tap on the category name and then tap **Yes**. POI categories which have been set with a warning have a sound symbol next to the category name.

3. Set the distance as 250 metres and tap **OK**.
4. Select **Sound effect** and then tap **Next**.
5. Select the warning sound for the POI and then tap **Next**.
6. If you only want to hear the warning when the POI is directly on a planned route, select **Warn only if POI is on route**. Then tap **Done**.

The warning is set for the selected POI category. You will hear a warning sound when you are 250 metres from a petrol station on your route.

Manage POIs

Tap **Manage POIs** to manage your POI categories and locations.



You can set your Start to let you know when you are near to selected POI locations. In this way you could, for example, set the device to let you know you when you are approaching a petrol station.

You can create your own POI categories and add your own POI locations to these categories.

This means you can, for example, create a new POI category called Friends. You could then add all your friends' addresses as POIs in this new category.

Tap the following buttons to create and maintain your own POIs:

- **Add POI** - tap this button to add a location to one of your own POI categories.
- **Warn when near POI** - tap this button to set your Start to warn you when you are near selected POIs.
- **Delete POI** - tap this button to delete one of your own POI categories.
- **Edit POI** - tap this button to edit one of your own POIs.
- **Add POI category** - tap this button to create a new POI category.
- **Delete POI category** - tap this button to delete one of your own POI categories.

Help

About getting help

Tap **Help** in the Main Menu to navigate to emergency services centres and other specialist services.

For example, if you are involved in a car accident, you could use the Help menu to find the contact details for the nearest hospital, call them using a phone and tell them your exact location.

Tip: If you do not see the Help button in the Main Menu, tap **Settings** and then **Safety settings**. Clear the checkbox for **Show only essential menu options while driving**.

Using Help to phone a local service

To use Help to locate a service centre, contact the centre by phone and navigate from your current location to the centre, do the following:

1. Tap the screen to show the Main Menu.
2. Tap **Help**.
3. Tap **Phone for help**.
4. Select the type of service you require, for example, Nearest hospital.
5. Select a centre from the list, the nearest is shown at the top of the list.

Your Start shows your position on the map along with a description of the location. This helps you explain where you are while making a call. The phone number is displayed for you to call using a phone.

6. To navigate your way to the centre by car, tap **Navigate there**. If you are on foot, tap **Walk there**.

Your Start starts guiding you to your destination.

Help menu options

Note: In some countries, information may not be available for all services.



Phone for help

Tap this button to find the contact details and location of a service centre.



Tap this button to navigate your way by car to a service centre.

Drive to help



Tap this button to navigate your way on foot to a service centre.

Walk to help



Tap this button to see your current location on the map.

Where am I?



Tap this button to read a selection of guides, including a First Aid guide.

**Safety and other
guides**



Tap this button to read a selection of guides relating to your navigation device. You can also access on-device help using this button.

Product manuals

Favourites

About Favourites

Favourites provide an easy way to select a location without the need to enter the address. They do not need to be favourite places, they can simply be seen as a collection of useful addresses.

Creating a Favourite

To create a Favourite, do the following:

1. Tap the screen to bring up the Main Menu.
2. Tap **Settings** to open the Settings menu.
3. Tap **Manage Favourites**.
4. Tap **Add**.

Select the type of the Favourite by tapping one of the buttons described below:



Home

You can set your Home location as a Favourite.



Favourite

You cannot create a Favourite from another Favourite. This option will always be unavailable in this menu.

To rename a Favourite, tap **Manage Favourites** in the Settings menu.



Address

You can enter an address as a Favourite.



Recent destination

Create a new Favourite by selecting a location from a list of your recent destinations.



Point of Interest

If you visit a POI you particularly like, for example a restaurant, you can add it as a Favourite.



Tap this button to add your current location as a Favourite.

For example, if you stop somewhere interesting, while you are there you can tap this button to create the Favourite.

My location



Tap this button to create a Favourite using the Map Browser.

Select the location of the Favourite using the cursor, then tap **Done**.

Point on map



Tap this button to create a Favourite by entering latitude and longitude values.

Latitude Longitude



Tap this button to select your last recorded position as your destination.

Position of last stop

Your Start suggests a name for your new Favourite. To enter a new name, there is no need to delete the suggested name, you just start typing.

Tip: It is a good idea to give your Favourite a name that is easy to remember.

5. Tap **OK**.

Your new favourite appears in the list.

After you have added two or more Favourites, you are asked whether you make regular trips to the same locations. If you tap **YES**, you can enter these destinations as your favourite destinations. Every time you switch on your device, you can immediately select one of these locations as your destination. To change these destinations or select a new destination, tap **Start-up settings** in the Settings menu, then select **Ask for a destination**.

Using a Favourite

You can use a Favourite as a way of navigating to a place without having to enter the address. To navigate to a Favourite, do the following:

1. Tap the screen to bring up the Main Menu.
2. Tap **Navigate to** or **Drive to**.
3. Tap **Favourite**.
4. Select a Favourite from the list.

You see your Favourite on the map. You can tap **Park nearby** to see a list of parking POIs near to your Favourite. You can also call the Favourite or see more information about it.

5. Tap Select to choose to navigate to this Favourite.

Tip: Use the left and right arrows to choose another Favourite from your list.

Your Start calculates the route for you.

6. When the route is calculated, tap **Done**.

Your Start will immediately start guiding you to your destination with spoken instructions and visual instructions on the screen.

Changing the name of a Favourite

To change the name of a Favourite, do the following:

1. Tap the screen to bring up the Main Menu.
2. Tap **Settings** to open the Settings menu.
3. Tap **Manage Favourites**.
4. Tap the Favourite you want to rename.

Tip: Use the left and right arrows to choose another Favourite from your list.

5. Type in the new name and then tap **OK**.
6. Tap **Done**.

Deleting a Favourite

To delete a Favourite, do the following:

1. Tap the screen to bring up the Main Menu.
2. Tap **Settings** to open the Settings menu.
3. Tap **Manage Favourites**.
4. Tap the Favourite you want to delete.

Tip: Use the left and right arrows to choose another Favourite from your list.

5. Tap **Yes** to confirm the deletion.
6. Tap **Done**.

Traffic

About RDS-TMC

The Traffic Message Channel (TMC), also known as RDS-TMC, transmits traffic information as a radio signal and is available free of charge in many countries.

TMC is not a TomTom Service, but is available when using the TomTom RDS-TMC Traffic Receiver.

Note: TomTom is not responsible for the availability or quality of traffic information provided by the Traffic Message Channel.

The Traffic Message Channel (TMC) is not available in all countries. To check the availability of TMC services in your country, go to tomtom.com/5826.

Using traffic information

If you are using an RDS-TMC receiver to view TMC traffic information on your TomTom Start, connect the TomTom RDS-TMC Traffic Receiver to the USB connector on your Start.

The traffic sidebar is shown on the right side of the Driving view. The sidebar informs you about traffic delays while you drive, using glowing dots to show you where each traffic incident is located on your route.



The top of the traffic sidebar represents your destination and shows the total time delay due to traffic jams and other incidents on your route.

The central section of the traffic sidebar shows individual traffic incidents in the order they occur on your route.

The bottom of the traffic sidebar represents your current location and shows the distance to the next incident on your route.

To make the traffic sidebar more readable some incidents may not be shown. These incidents will always be of minor importance and only cause short delays.

The colour of the pointers, as shown below, gives you an instant indication of the type of incident:



Unknown or undetermined situation.



Slow traffic.



Queueing traffic.



Stationary traffic or road closure.

Taking the fastest route

Your Start regularly looks for a faster route to your destination. If the traffic situation changes and a faster route is found, your Start will offer to replan your journey so you can use the faster route.

You can also set your Start to automatically replan your journey whenever a faster route is found. To apply this setting, tap **Traffic settings** in the Traffic menu.

To manually find and replan the fastest route to your destination, do the following:

1. Tap the traffic sidebar.

Tip: If you find that tapping the sidebar opens the Main menu instead of the traffic menu, try tapping the sidebar with your finger resting on the edge of the screen.

2. Tap **Minimise delays**.

Your Start searches for the fastest route to your destination.

The new route may include traffic delays. You can replan the route to avoid all traffic delays, but a route which avoids all delays will usually take longer than the fastest route.

3. Tap **Done**.

Setting the radio frequency for RDS-TMC information

Note: Not all devices support setting the radio frequency.

If you know the frequency of a particular radio station you want to use for RDS-TMC traffic information, you can set the frequency manually. To activate this feature, you must first enable manual tuning as follows:

1. Tap the Traffic bar in the Driving View, then tap **Traffic settings**.
2. Select **Tune manually by entering a frequency** and then tap **Done**.

Now you can enter the frequency of the radio station.

3. Tap the Traffic sidebar in the Driving View.
4. Tap **Tune Manually**.



5. Enter the frequency of the radio station.
6. Tap **Done**.

Your TomTom navigation device looks for your radio station. If it doesn't find a radio station at the frequency you set, it automatically continues to search for the next available station.

Minimising delays

You can use TomTom Traffic to minimise the impact of traffic delays on your route. To minimise delays automatically, do the following:

1. Tap **Services** in the Main Menu.
2. Tap **Traffic**.
3. Tap **Traffic settings**.
4. Choose between always taking the faster route automatically, being asked or never changing your route.
5. Tap **Next** and then **Done**.
6. Tap **Minimise traffic delay**.

Your device plans the quickest route to your destination. The new route may include traffic delays and may remain the same as the original route.

You can re-plan the route to avoid all delays, but this route is unlikely to be the quickest possible route.

7. Tap **Done**.

Making commuting to work easier

The **Home to work** or **Work to home** buttons in the Traffic menu lets you check your route to and from work with one tap of a button.

When you use either of these buttons, your device plans a route between your home and work locations and checks the route for possible delays.

The first time you use **Home to work**, you must set your traffic home and work locations by doing the following:

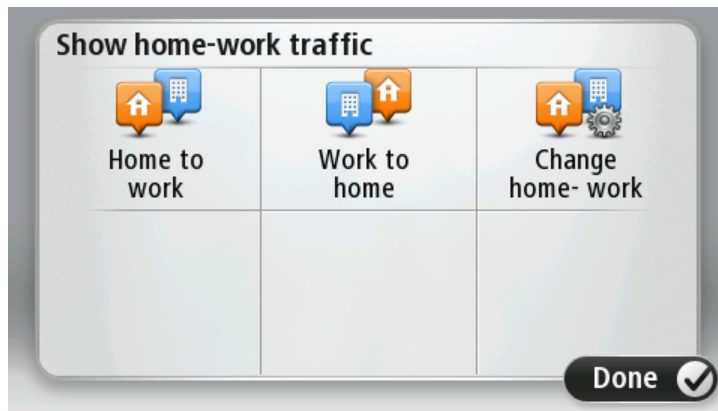
1. Tap the traffic sidebar to open the Traffic menu.
2. Tap **Show home-work traffic**.
3. Set your home location and your work location.

If you have already set the locations and want to change them, tap **Change home-work**.



You can now use the **Home to work** and **Work to home** buttons.

Note: The home location you set here is not the same as the home location you can set in the **Settings Menu**. In addition, the locations you use here do not have to be your actual home and work locations. If there is another route that you often travel, you can set Work/Home to use these locations instead.



For example, to check for delays on your route home before you leave the office, do the following:

1. Tap the traffic sidebar to open the Traffic menu.
2. Tap **Show home-work traffic**.
3. Tap **Work to home**.

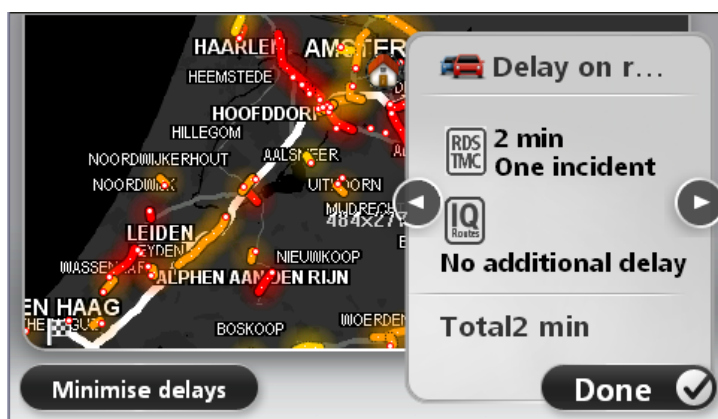
The Driving View is shown and a message is displayed telling you about traffic incidents on this route. The Traffic sidebar also shows any delays.

Getting more information about an incident

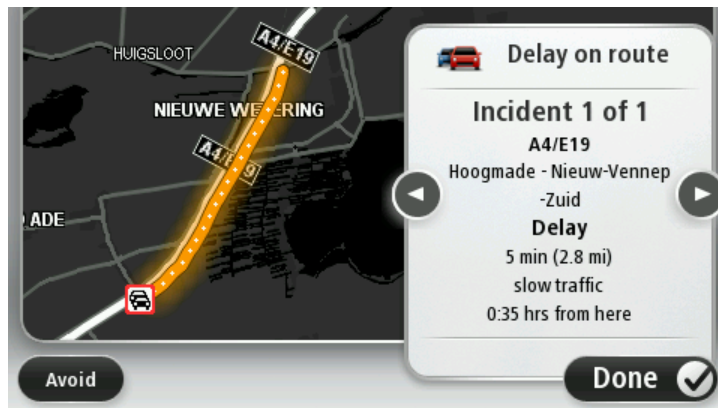
To check for delays on your route, tap **Show traffic on route** in the Traffic menu. Your navigation device shows a summary of the traffic delays on your route.

The total includes any delays due to traffic incidents and those due to busy roads, with information provided by IQ Routes.

Tap **Minimise delays** to check if you can reduce the delay.



Tap the left and right arrow buttons to move through each incident in turn, viewing the details of each one. This includes the type of incident, for example road works, and the length of delay caused by this incident.



You can also access the details about individual incidents by tapping **View map** in the Main Menu and then tapping on the traffic incident symbol.

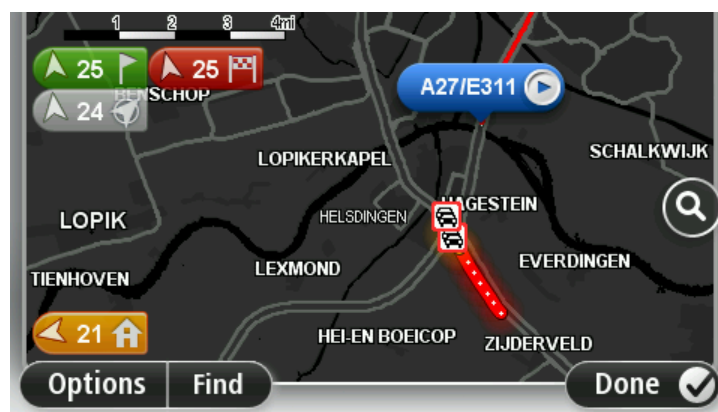
When shown on the map, a traffic incident starts with an icon. In the case of a traffic queue, the direction of the incident is from the icon towards the other end.

Checking traffic incidents in your area

Get an overview of the traffic situation in your area, using the map. To find local incidents and their details, do the following:

1. Tap the traffic sidebar to open the Traffic menu.
2. Tap **View map**.
The map overview screen is shown.
3. If the map does not show your location, tap the marker to centre the map on your current location.

The map shows traffic incidents in the area.



4. Tap on any traffic incident to get more information.

A screen is shown that gives you detailed information about the incident you chose. To display information about surrounding incidents use the left and right arrows at the bottom of this screen.

Changing traffic settings

Use the **Traffic settings** button to choose how traffic information works on your navigation device.

1. Tap the traffic sidebar to open the Traffic menu.
2. Tap **Traffic settings**.



3. To hear a beep sound when a new traffic incident occurs on your route, select **Report if traffic on route changes** and then tap **Done**.
4. If you are using an RDS-TMC Traffic Receiver, you will be able to select the setting **Tune manually by entering a frequency**. If you select this option, the button **Tune manually** is shown in the Traffic menu. Tap **Tune manually** to enter the frequency of a particular radio station you want to use for RDS-TMC traffic information
5. If a faster route is found while you are driving, Traffic can replan your journey to use the faster route. Select one of the following options and then tap **Done**.
 - **Always switch to that route**
 - **Ask me if I want to change**
 - **Never change my route**

Traffic incidents

Traffic incidents and warnings are shown on the map, in the Driving View and on the Traffic sidebar.

To find out more about an incident, tap **Browse Map** in the Main Menu. Tap on a traffic incident symbol on the map to see information about that incident. To display information about surrounding incidents, use the left and right arrows at the bottom of the screen.

There are two types of incident and warning signs:

- Symbols shown in a red square are traffic incidents. Your navigation device can replan to avoid them.
- Symbols shown in a red triangle are weather related. Your device does not replan to avoid these warnings.

Traffic incident symbols:



Accident



Road works



One or more lanes closed



Road closed



Traffic incident



Traffic jam

Weather related symbols:



Fog



Rain



Wind



Ice



Snow



Note: The incident avoided symbol is shown for any traffic incident that you avoid using a traffic service.

Traffic menu

To open the Traffic menu, tap the Traffic sidebar in the Driving View or tap **Traffic** in the Services menu.

The following buttons are available:



Tap this button to re-plan your route based on the latest traffic information.

Minimise traffic delays



Tap this button to calculate the quickest route from your home location to your place of work and back.

Show home-work traffic



Show traffic on route

Tap this button for an overview of traffic incidents along your route.
Tap the left and right buttons for more detailed information about each incident.

Tap **Replan** to replan your route and avoid the traffic incidents that are shown on the map.



View map

Tap this button to browse the map and see the traffic incidents shown on the map.



Change Traffic settings

Tap this button to change your settings for how the Traffic service works on your device.



Read aloud traffic info

Tap this button to hear spoken information about traffic incidents on your route.

Note: Your TomTom device must have a computer voice installed to read information aloud.

Speed cameras

About Speed Cameras

The Speed Cameras service warns you about the following roadside camera locations:

- Speed camera locations.
- Accident blackspot locations.
- Mobile speed camera locations.
- Average speed camera locations.
- Toll road camera locations.
- Traffic light camera locations.

Speed camera warnings

By default, warnings are given 15 seconds before you reach a speed camera location. To change the number of seconds or warning sound, tap **Alert settings** in the Speed Cameras menu.

You are warned in three ways:

- Your device plays a warning sound.
- The type of speed camera and your distance from the camera location is shown in the Driving View. If a speed restriction has been reported for the camera, the speed is also shown in the Driving View.
- The location of the speed camera is shown on the map.

Note: For average speed cameras, you are warned by a combination of icons and sounds at the start, middle and end of the average speed check zone.

Changing the way you are warned



Alert settings

To change the way your TomTom Start warns you about speed cameras, tap the **Alert settings** button.

You can then set how close you want to be to a speed camera before you are warned and what type of sound will be played.

For example, to change the sound that is played when you approach a fixed speed camera, do the following:

1. Tap **Services** in the Main Menu.
2. Tap **Speed Cameras**.
3. Tap **Alert settings**.

A list of speed camera types is displayed. A speaker is shown next to the speed camera types that have been set for an alert.

4. Tap **Fixed cameras**.
5. Tap **NO** to avoid removing the fixed speed camera alerts.
6. Enter the time in seconds for when a warning is given before you reach a camera. Then tap **OK**.
7. Tap the sound you want to be used for the warning.

Tips: To switch off warning sounds for a camera type, tap **Silence** in step 7 above. You still see a warning in the Driving View if you switch off the warning sound.

8. Tap **YES** to save your changes.

Speed camera symbols

Speed cameras are shown as symbols on the Driving View.

When you approach an area where an alert is located, you see a symbol and a warning sound is played.

You can change both the warning sound and the number of seconds that the warning is issued before reaching the alert.



Fixed speed camera



Traffic light camera



Toll road camera



Restricted road camera - located on a minor road that reduces traffic on a larger road



Other camera



Mobile camera hotspot



Average speed check



Accident black spot



Bi-directional speed camera



Ungated railway crossing

Report button

To show the report button in the Driving View, do the following:

1. Tap **Services** in the Main Menu.
 2. Tap **Speed Cameras**.
 3. Tap **Enable report button**.
 4. Tap **Done**.
-

The report button is shown on left-hand side of the Driving View or if you are already using the quick menu, it's added to the buttons available in the quick menu.

Tip: To hide the report button, tap **Disable report button** in the Speed Cameras menu.

Reporting a new speed camera while on the move

To report a speed camera on the move, do the following:

1. Tap the report button shown in the Driving View or in the quick menu to record the location of the camera.

If you tap the report button within 20 seconds of receiving a speed camera warning, you get the option to add a camera or remove a camera. Tap **Add camera**.

2. Tap **Fixed camera** or **Mobile camera**, depending on the type of camera you are reporting.
3. Select the camera location on the map and confirm that it is correct.
4. Tap the type of fixed camera you want to report, for example, a traffic light camera.

Note: If the type of camera you choose has a speed restriction, you can also enter the speed.

You see a message confirming that a report has been created.

Reporting a new speed camera while at home

You do not need to be at the location of a speed camera to report the new location. To report a new speed camera location while you are at home, do the following:

1. Tap **Services** in the Main Menu on your navigation device.
2. Tap **Speed Cameras**.
3. Tap **Report safety camera**.
4. Tap **Fixed camera** or **Mobile camera** depending upon the type of speed camera.
5. Use the cursor to mark the exact location of the camera on the map, then tap **Done**.
6. Tap **Yes** to confirm the location of the camera.
7. Tap on the type of camera you want to report and if necessary, choose the speed restriction for the camera.

You see a message confirming that a report has been created.

Reporting incorrect camera alerts

You may receive an alert for a camera that is no longer there. To report an incorrect camera alert, do the following:

Note: You can only report an incorrect camera alert while you are at the location.

1. While you are at the location of the missing camera, tap **Report** in the Driving View.

Note: This must be done within 20 seconds of receiving the camera alert.

2. Tap **Remove**.

Types of fixed speed camera you can report

When you report a fixed speed camera, you can select the type of fixed camera you are reporting.

These are the different types of fixed speed camera:



This type of speed camera checks the speed of passing vehicles.

Speed camera



This type of camera checks for vehicles breaking traffic rules at traffic lights.

Traffic light camera



This type of camera monitors traffic at toll road barriers.

Toll road camera



This type of speed camera checks the average speed of vehicles between two fixed points.

**Average speed
check**



This type of camera checks traffic on roads where access is restricted.

Vehicle restriction



All other types of camera that do not fall into any of the above categories.

Other camera

Average speed check camera warnings

There are several types of visual and audible warnings that you may see and hear when you meet an average speed check camera.

You always receive a start and end zone warning regardless of the speed you are travelling at. Intermediate warnings, if given, occur every 200 meters.

All the warnings are described below:



Start of zone warning

As you approach the start of an average speed check zone, you see a visual warning in the top left hand corner of the Driving View with a distance to the camera underneath it. You hear an audible warning.

You also see a small icon on the road showing the position of the average speed check camera at the start of the zone.



Intermediate warning - type 1

Once in the speed check zone, if you are not speeding and have already received a start of zone warning, you see a visual warning in the Driving View. This reminds you that you are still in the speed check zone.



Intermediate warning - type 2

Once in the speed check zone, if you are driving faster than the permitted speed and have already received a start of zone warning, you see a visual warning in the Driving View indicating the maximum permitted speed. You also hear a quiet audible warning. These warnings are there to remind you to slow down...



Intermediate warning - type 3

Once in the speed check zone, if you are driving faster than the permitted speed and have not received a start of zone warning, you see a visual warning in the Driving View indicating the maximum permitted speed. You also hear a loud audible warning.

These warnings occur at the FIRST intermediate point only and are there to remind you to slow down...



End of zone warning

As you approach the end of an average speed check zone, you see a visual warning in the Driving View with a distance to the camera shown underneath it. You hear an audible warning.

You also see a small icon on the road showing the position of the average speed check camera at the end of the zone.

Speed Cameras menu

To open the Speed Cameras menu, tap **Services** in the Main Menu and then tap **Speed Cameras**.



**Report speed
camera**

Tap this button to report a new speed camera location.



Tap this button to set the alerts you will receive and the sounds used for each alert.

Alert settings



Tap this button to disable alerts.

Disable alerts



Enable report button

Tap this button to enable the report button. The report button is shown in the Driving View or in the quick menu.

When the report button is shown in the Driving View, this button changes to **Disable report button**.

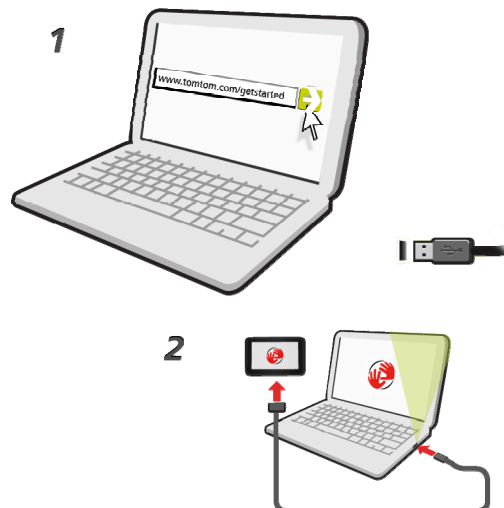
MyTomTom

About MyTomTom

MyTomTom helps you manage the contents and services of your TomTom Start navigation device, as well as giving you access to the TomTom community. You log in to MyTomTom on the TomTom website. It is a good idea to frequently connect your navigation device to MyTomTom to ensure you always have the latest updates.

Tip: We recommend using a broadband internet connection whenever you connect your navigation device to MyTomTom.

Setting up MyTomTom



To set up MyTomTom, do the following:

1. Connect your computer to the internet.
2. Start a browser and go to tomtom.com/getstarted.
3. Click **Download now**.

Your browser downloads the MyTomTom support application, which you need to install on your computer in order to connect your device to MyTomTom. Follow the instructions on the screen if you are asked questions while downloading.

4. When prompted, connect your device to your computer using the USB cable. Then switch your device on.

Important: You should plug the USB cable directly into a USB port on your computer and not into a USB hub or USB port on a keyboard or monitor.

Once the MyTomTom support application is installed, you can access MyTomTom from the notification area on your desktop.

Tip: When you connect your navigation device to your computer, MyTomTom tells you if there are any updates for your device.

MyTomTom account

To download content and services from TomTom, you need a MyTomTom account. You can create an account when you start using MyTomTom.

Note: If you have more than one TomTom device, you need a separate account for each device.

Customer support

Getting help to use your navigation device

You can get further help by going to tomtom.com and clicking **Support**.

For warranty information, go to tomtom.com/legal.

Status & information



Tap this button to open the Status & information menu.

Status & information



Tap this button to view technical information about your device, such as your serial number for your device and the TomTom App version.

Version information



Tap this button to see the current status for GPS reception.

GPS Status

Addendum

Important Safety Notices and Warnings

Global Positioning System

The Global Positioning System (GPS) is a satellite-based system that provides location and timing information around the globe. GPS is operated and controlled under the sole responsibility of the Government of the United States of America which is responsible for its availability and accuracy. Any changes in GPS availability and accuracy, or in environmental conditions, may impact the operation of your TomTom device. TomTom does not accept any liability for the availability and accuracy of GPS.

Use with Care

Use of a TomTom device for navigation still means that you need to drive with due care and attention.

Aircraft and Hospitals

Use of devices with an antenna is prohibited on most aircraft, in many hospitals and in many other locations. A TomTom device must not be used in these environments.

Battery

This product uses a Lithium-Ion battery.

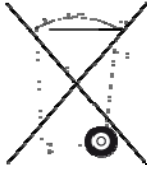
Do not use it in a humid, wet and/or corrosive environment. Do not put, store or leave your product in or near a heat source, in a high temperature location, in strong direct sunlight, in a microwave oven or in a pressurised container, and do not expose it to temperatures over 60°C (140°F). Failure to follow these guidelines may cause the battery to leak acid, become hot, explode or ignite and cause injury and/or damage. Do not pierce, open or disassemble the battery. If the battery leaks and you come into contact with the leaked fluids, rinse thoroughly with water and seek medical attention immediately. For safety reasons, and to prolong the lifetime of the battery, charging will not occur at low (below 0°C/32°F) or high (over 45°C/113°F) temperatures.

Temperatures: Standard operation: -0°C (32°F) to +45°C (113°F); short period storage: -20°C (-4°F) to + 60°C (140°F); long period storage: -20°C (-4°F) to +25°C (77°F).

Caution: risk of explosion if battery is replaced by an incorrect type.

Do not remove or attempt to remove the non-user-replaceable battery. If you have a problem with the battery, please contact TomTom customer support.

THE BATTERY CONTAINED IN THE PRODUCT MUST BE RECYCLED OR DISPOSED OF PROPERLY ACCORDING TO THE LOCAL LAWS AND REGULATIONS AND ALWAYS SEPARATE FROM HOUSEHOLD WASTE. BY DOING THIS YOU WILL HELP CONSERVE THE ENVIRONMENT. USE YOUR TOMTOM ONLY WITH THE SUPPLIED DC POWER LEAD (CAR CHARGER/BATTERY CABLE), AC ADAPTER (HOME CHARGER), IN AN APPROVED CRADLE OR USING THE SUPPLIED USB CABLE TO CONNECT TO A COMPUTER FOR BATTERY CHARGING.



If your device requires a charger, please use this device with the charger provided. For replacement chargers, go to tomtom.com for information about approved chargers for your device.

The stated battery life is a maximum possible battery life. The maximum battery life will only be achieved under specific atmospheric conditions. The estimated maximum battery life is based on an average usage profile.

For tips on extending the battery life, see this FAQ: tomtom.com/batterytips

CE marking

This equipment complies with the requirements for CE marking when used in a residential, commercial, vehicular or light industrial environment, achieving all the appropriate provisions of the relevant legislation in the EU.

CE0168

R&TTE directive

Hereby, TomTom declares that TomTom personal navigation devices and accessories are in compliance with the essential requirements and other relevant provisions of the EU Directive 1999/5/EC. The declaration of conformity can be found here: tomtom.com/legal.

WEEE directive

This symbol on the product or its packaging indicates that this product shall not be treated as household waste. In line with EU Directive 2002/96/EC for waste electrical and electronic equipment (WEEE), this electrical product must not be disposed of as unsorted municipal waste. Please dispose of this product by returning it to the point of sale or to your local municipal collection point for recycling.



Pacemakers

Pacemaker manufacturers recommend that a minimum of 15cm (6 inches) be maintained between a handheld wireless device and a pacemaker to avoid potential interference with the pacemaker. These recommendations are consistent with independent research and recommendations by Wireless Technology Research.

Guidelines for people with Pacemakers

You should ALWAYS keep the device more than 15cm (6 inches) from your pacemaker when turned ON.

You should not carry the device in a breast pocket.

If you have any reason to suspect that interference is taking place, turn OFF your device.

Other Medical Devices

Please consult your physician or the manufacturer of the medical device, to determine if the operation of your wireless product may interfere with the medical device.

This Document

Great care was taken in preparing this manual. Constant product development may mean that some information is not entirely up to date. The information in this document is subject to change without notice.

TomTom shall not be liable for technical or editorial errors or omissions contained herein; nor for incidental or consequential damages resulting from the performance or use of this material. This document contains information protected by copyright. No part of this document may be photocopied or reproduced in any form without prior written consent from TomTom N.V.

Model names

4EN52, 4EN42

Copyright notices

© 2011 TomTom N.V., The Netherlands. TomTom®, and the "two hands" logo, among others, are Trademarks owned by TomTom N.V. or one of its subsidiaries. Please see tomtom.com/legal for warranties and end user licence agreements applying to this product.

Ordnance Survey © Crown Copyright Licence number 100026920.

Data Source © 2011 TomTom

All rights reserved.

SoundClear™ acoustic echo cancellation software © Acoustic Technologies Inc.

Nuance® is a registered trademark of Nuance Communications, Inc. and is used here under licence.

Some images are taken from NASA's Earth Observatory.

The purpose of NASA's Earth Observatory is to provide a freely-accessible publication on the Internet where the public can obtain new satellite imagery and scientific information about our home planet.

The focus is on Earth's climate and environmental change: earthobservatory.nasa.gov

The software included in this product contains copyrighted software that is licenced under the GPL. A copy of that licence can be viewed in the Licence section. You can obtain the complete corresponding source code from us for a period of three years after our last shipment of this product. For more information, visit tomtom.com/gpl or to call your local TomTom customer support team, visit tomtom.com/support and upon your request we will send you a CD with the corresponding source code.

Linotype, Frutiger and Univers are trademarks of Linotype GmbH registered in the U.S. Patent and Trademark Office and may be registered in certain other jurisdictions.

MHei is a trademark of The Monotype Corporation and may be registered in certain jurisdictions.