

# **Mazda NB1 Reference Guide**

# Contents

<b>Read me first</b>	<b>6</b>
Switching on and off .....	6
Setting up.....	6
GPS reception.....	6
Device not starting .....	6
Sharing information with TomTom .....	7
Take care of your device .....	7
<b>The memory card</b>	<b>9</b>
About your memory card .....	9
Inserting your memory card .....	9
Removing your memory card.....	9
About TomTom HOME .....	9
Installing TomTom HOME.....	10
Initialising your memory card .....	10
Updating your device .....	11
Backing up your navigation device .....	11
<b>Safety Notice</b>	<b>13</b>
Safety settings .....	13
<b>Planning a route</b>	<b>14</b>
Planning a route.....	14
Route summary .....	16
Selecting a route type .....	17
Using arrival times.....	17
Navigation menu options.....	17
Planning a route in advance .....	18
Viewing route information .....	19
<b>Voice control</b>	<b>21</b>
Voice control.....	21
About navigation device voice control.....	21
Using voice control .....	21
Planning a trip using your voice .....	22
Entering addresses using your voice .....	23
<b>The Driving View</b>	<b>25</b>
About the Driving View .....	25
The Driving View .....	25

Driving View Symbols.....	26
<b>Advanced lane guidance</b> .....	<b>27</b>
About lane guidance .....	27
Using lane guidance .....	27
<b>Changing your route</b> .....	<b>29</b>
Making changes to your route.....	29
Change route menu.....	29
About waypoints .....	30
Adding the first waypoint to your route .....	31
Adding further waypoints to your route .....	31
Changing the order of waypoints .....	32
Deleting a waypoint.....	32
Changing notification settings for a waypoint .....	32
Reactivating a waypoint .....	33
<b>View map</b> .....	<b>34</b>
About viewing the map.....	34
View map .....	34
Options.....	35
Cursor menu .....	36
<b>Map corrections</b> .....	<b>38</b>
About Map Share .....	38
Correcting a map error .....	38
Types of map correction .....	38
<b>Sounds and voices</b> .....	<b>42</b>
About sounds and voices .....	42
About voices that speak street names .....	42
Selecting a voice .....	42
Changing the volume level .....	42
<b>Settings</b> .....	<b>43</b>
About Settings .....	43
2D/3D settings .....	43
Advanced settings.....	43
Change car symbol.....	44
Home location .....	44
Favorites .....	44
Keyboard.....	45
Make your own menu .....	45
Map colors .....	46
Manage POIs.....	46

Reset factory settings .....	46
Planning settings .....	47
Safety settings .....	48
Show POI on map .....	48
Status bar .....	48
Maps.....	49
Turn off voice guidance / Turn on voice guidance .....	49
Units .....	49
Version information.....	50
Voices.....	50
<b>Points of Interest</b>	<b>51</b>
About Points of Interest .....	51
Creating POIs .....	51
Using POIs to plan a route .....	53
Showing POIs on the map .....	53
Calling a POI.....	54
Setting warnings for POIs .....	54
Manage POIs.....	55
<b>Help</b>	<b>56</b>
About getting help.....	56
Using Help to drive to a local service.....	56
Help menu options .....	56
<b>Favorites</b>	<b>58</b>
About Favorites .....	58
Creating a Favorite .....	58
Using a Favorite.....	59
Changing the name of a Favorite .....	60
Deleting a Favorite .....	60
<b>Traffic</b>	<b>61</b>
About RDS-TMC .....	61
Safety Notice .....	61
Using traffic information .....	61
Taking the fastest route.....	62
Minimizing delays.....	62
Making commuting to work easier.....	63
Getting more information about an incident.....	64
Checking traffic incidents in your area .....	65
Changing traffic settings .....	66
Traffic incidents .....	66
Traffic menu.....	67

<b>Speed Cameras</b>	<b>69</b>
Important .....	69
Important .....	69
About Speed Cameras .....	69
Speed Camera warnings.....	69
Changing the way you are warned.....	70
Safety camera symbols.....	70
Report button.....	71
Reporting a new speed camera while on the move .....	72
Reporting a new speed camera while at home .....	72
Reporting incorrect camera alerts .....	72
Types of fixed speed camera you can report .....	73
Speed Enforcement Zone warnings.....	73
Speed Cameras menu.....	74
<b>TomTom HOME</b>	<b>76</b>
About TomTom HOME .....	76
Installing TomTom HOME.....	76
MyTomTom account.....	77
Updating your device .....	77
Introducing HOME help .....	78
<b>Customer support</b>	<b>79</b>
Getting help to use your navigation device .....	79
Status & information.....	79
<b>Addendum and Copyright</b>	<b>80</b>
<b>Copyright notices</b>	<b>84</b>

# Read me first

---

## Switching on and off

Your Mazda NB1 switches on when your car engine starts and switches off automatically when you turn off your car's engine.

Until a connection has been established between the main device and the Mazda NB1, the screen shows audio-related information and the **Navi** button on the main display is inactive. In the case of a cold boot of the navigation device, press the **Navi** button. A black screen is shown and it may take up to 30 seconds for the main screen to appear.

Under extreme temperature conditions, the navigation device may not start. When the temperature is within the normal range again, the device should start. If the device fails to start automatically in this situation, stop your car engine and start the car engine again.

**Note:** In some situations, your navigation system may restart when turning your key in the ignition from ACC-ON to the engine start position. If this happens, it may take up to 30 seconds for the main screen to appear on the navigation system.

## Setting up

When you first switch on your device, you have to answer a few questions to set up the device. Answer the questions by tapping the screen.

## GPS reception

When you first start your Mazda NB1 navigation device, the device may need a few minutes to determine your GPS position and show your current position on the map. In the future, your position will be found much faster, usually within a few seconds.

In areas where GPS reception is not possible, such as tunnels, your location may not be accurate.

---

**Important:** The GPS antenna is located in the dashboard so do not put objects on the dashboard.

---

## Device not starting

In rare cases, your TomTom navigation module may not start correctly or may stop responding to your taps. For example, if the device temperature is too high or too low, the system shuts down.

In rare circumstances, you may need to reset your navigation device. To reset your device, switch off the car engine and then remove the memory card. Re-insert the memory card and switch the car engine on again.

## Sharing information with TomTom

When you first start navigating or perform a reset, your device asks for permission to collect some information about your use of the navigation device. The information is stored on the device until we retrieve it. We use it anonymously to improve our products and services.

You can change whether you share this information with us at any time by doing the following:

1. In the Main Menu, tap **Settings**.
2. Tap **Me and my device**.
3. Tap **My information**.
4. Tap **No** to stop sharing or tap **Yes** to start sharing.

### Additional information

Only if you give us your permission, your navigation device will continuously collect information. The information is stored on your device until you connect it to your PC, then the information is sent to TomTom and deleted from your device. The information includes details that identify the navigation device, details about routes and locations and information entered while you were using the navigation device.

Immediately after receiving this information, TomTom automatically and irreversibly destroys any data that allows identification of you or your device. This, now anonymous, information is used to improve TomTom's products and services, such as maps, reports on Points of Interest and average speeds driven. These products and services are also used by government agencies and businesses.

Using your navigation device, you can join the MapShare Community or report speed cameras. If you choose to use either of these services, your reports, that include location information and your MyTomTom account name, are sent to TomTom and kept together with your MyTomTom account. TomTom then uses your information to improve its maps and speed cameras.

If you no longer allow sharing of information, none of the above information is sent to TomTom and information previously stored on your device is deleted.

TomTom will not give anyone else access to the information collected from your navigation device.

In choosing to provide TomTom with information you are helping to make driving better, specifically by improving maps, traffic flows and reducing congestion. We appreciate your help.

If you think that your information is not being used for the purpose for which you have provided it to TomTom, contact us at [tomtom.com/support](https://tomtom.com/support).

See our privacy policy at [tomtom.com/privacy](https://tomtom.com/privacy).

## Take care of your device

It is important to take care of your device as follows:

- Your device is not designed for use in extreme temperatures and any such exposure may cause permanent damage.

- Do not open the casing of your device under any circumstances. Doing so may be dangerous and will void the warranty.

---

**Important:** If you sell your car, you should remove all personal information from your navigation device first. To remove your personal information, tap **Settings** and then tap **Reset factory settings**.

---



# The memory card

---

## About your memory card

A memory card is supplied with your navigation system. It includes a map of your country or group of countries.

Updates are regularly produced by TomTom, particularly for maps and services like speed cameras. These updates are only available for download by inserting your navigation system's memory card into a computer that is connected to the internet.

Once your new vehicle has been delivered, if a newer version of your map is available within 60 days of first using your navigation device, you can download this map for free.

---

**Important:** In order to qualify for the latest map guarantee you need to check if a new map is available within the 60 day period, and you are only entitled to one free map download.

---

## Inserting your memory card

To insert your memory card into your Mazda NB1 in your car, do the following:

1. Switch off the ignition in the car so that the navigation system is switched off.
2. Open the sliding door and insert the memory card, taking care to handle it carefully and that it is the right way round.

**Note:** Only use your memory card for operating and updating your navigation system. Do not insert the memory card into another vehicle or into any other device such as a camera.

## Removing your memory card

To remove your memory card from your Mazda NB1 in your car, do the following:

1. Switch off the ignition in the car so that the navigation system is switched off.
2. Slide the door open and push gently on the memory card.
3. Remove the memory card, taking care to handle it carefully.

## About TomTom HOME

Using TomTom HOME you can register and manage your navigation device to receive free updates and buy new services. It's a good idea to connect to HOME frequently so you can do the following:

- Download for free the most recent map available for your device, if you connect to TomTom HOME within 60 days of buying your device.
- Download updates for your device for free, including Map Share updates and other services included with your product.

- Add new items to your device, like maps, voices and POIs, as well as buy TomTom services and manage your subscriptions.
- Share your map corrections and other content with the TomTom community.
- Make and restore backups of your device.

When using HOME, you can get help with what you are doing from the HOME Help. You can also read about all the other things that HOME can do for you.

**Tip:** We recommend using a broadband internet connection whenever you connect to HOME.

## Installing TomTom HOME

The steps below refer to Internet Explorer on Windows XP. If you're using another browser or operating system, visit [tomtom.com/support](http://tomtom.com/support) for more information.

To install TomTom HOME on your computer, do the following:

1. Connect your computer to the internet.
2. Click the link below to download the latest version of TomTom HOME:  
[tomtom.com/home](http://tomtom.com/home)
3. We recommend downloading the file to your computer by clicking **Save**.
4. Once the download is complete, click **Open**.
5. If you accidentally closed the Download Complete window, locate the file **TomTomHOME2winlatest.exe** on your computer and double-click it.
6. If you get a security warning, click **Run**.
7. Click **Next**, then click **Install**.

The installation starts.

8. Once the installation is complete click **Finish**.

## Initialising your memory card

To use a new or empty memory card with TomTom HOME, it needs to be initialized so that HOME can detect it. To initialize your card, do the following:

1. Switch on your Mazda NB1.
2. Insert the new memory card into your Mazda NB1.
3. Wait for a few seconds so that the card can be initialized by your Mazda NB1.
4. Remove the card from your Mazda NB1 and insert it into the card reader connected to your computer.

Your new card is now ready for use with TomTom HOME.

## Updating your device

Before you start, make sure you have a backup of your device or memory card. For more information, see [Backing up your navigation device](#).

You can check for updates for your maps, services and for a whole range of other free items or items for purchase. The instructions below describe how to update the TomTom application on your device.

To check for an updated application version do the following:

1. Insert your memory card into the card reader connected to your computer.
2. Wait for TomTom HOME to start.
3. If HOME does not automatically check for updates, click **Update my device** in the HOME menu.

**Note:** If you would like to install an application you downloaded previously, click **Add Traffic, Voices, Speedy Cameras, etc. > Items on my computer**.

4. If a new application is available, it is listed on the next screen.
5. Make sure the new application is selected, then click **Download updates**.  
HOME downloads the selected items...
6. HOME then installs the selected items on your memory card.
7. Click **Done**.
8. Click **Device > Disconnect Device** in the HOME menu. You can then disconnect your card from your computer.

## Backing up your navigation device

The easiest way to make a backup of all the contents of your TomTom navigation device is by using TomTom HOME. You can make one backup per device and store it on your computer. When you make a new backup, the old backup for that device is overwritten.

1. Insert your memory card into the card reader connected to your computer.  
TomTom HOME starts automatically.

**Tip:** If TomTom HOME does not start, do one of the following:

**Windows:** Click on the **Start** menu and go to **All Programs > TomTom** and then click on **TomTom HOME**.

**Mac:** Click **Go** in the Finder menu and choose **Applications**, then double-click **TomTom HOME**.

2. Click **Back up and restore** in the HOME menu.
3. Click **Back up my device**.
4. Click **Back up now**.  
HOME backs up your device by backing up the contents of your memory card.
5. Wait until HOME has finished creating the backup, then click **Done**.

To see where HOME saves your backups do one of the following:

**Windows:** Click **Tools > TomTom HOME Preferences** and then select the **Folder Preferences** tab.

**Mac:** Click **TomTom HOME > Preferences...** and then select the **Folder Preferences** tab.

To restore a backup, click **Back up and restore** in the HOME menu and then click **Restore my device**.

# Safety Notice

---

Some navigation devices contain a GSM/GPRS module which can interfere with electrical devices such as cardiac pacemakers, hearing aids and aviation equipment.

Interference with these devices may endanger the health or life of you or others.

If your device includes a GSM/GPRS module, do not use it near unprotected electrical units or in areas where the use of mobile telephones is prohibited, such as hospitals and aircraft.

## Safety settings

We recommend using the safety settings to make your driving as safe as possible.

These are some of the options included in the safety settings:

- Show safety reminders
- Warn when driving faster than allowed

If your device supports voice commands, you can also drive more safely by using voice commands to control your navigation device.

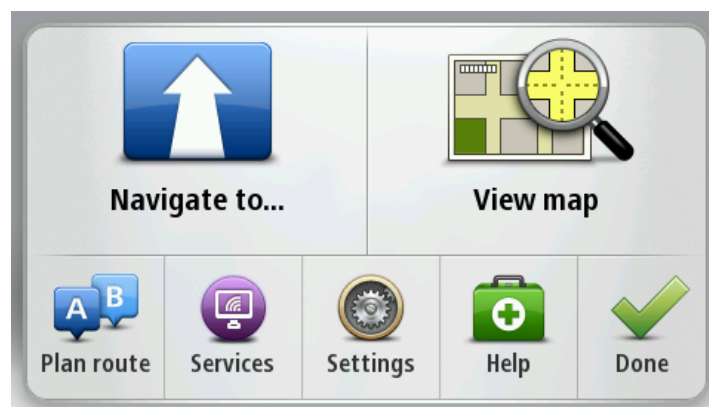
# Planning a route

## Planning a route

**Important:** In the interest of safety and to reduce distractions while you are driving, you should always plan a route before you start driving.

To plan a route on your Mazda NB1, do the following:

1. Tap the screen to open the Main Menu.



2. Tap **Navigate to** or **Drive to**.

3. Tap **Address**.

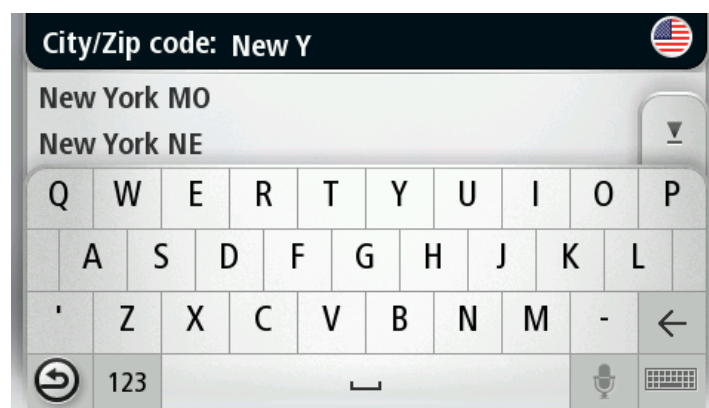
You can change the country or state setting by tapping the flag before you select a city.

4. Enter the town or city name, or the postcode.

**Tip:** Instead of typing the address, tap the microphone button to enter the address by speaking to your Mazda NB1.

Towns with similar names are shown in the list while you type.

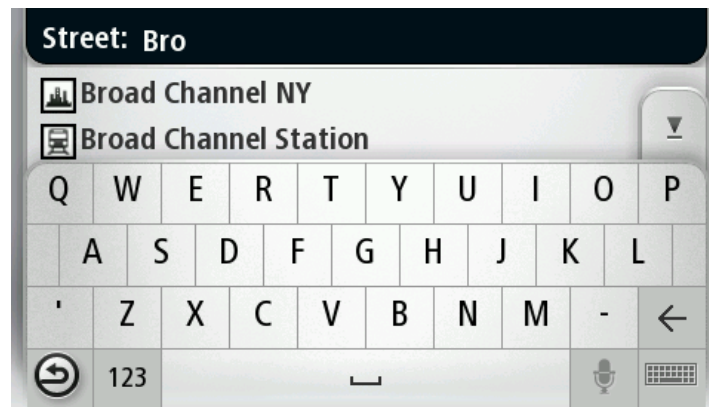
When the correct city or town appears in the list, tap the name to select the destination.



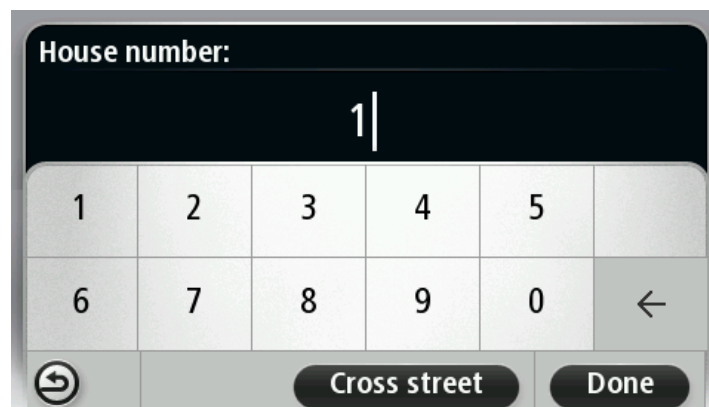
5. Enter the street name.

Streets with similar names are shown in the list while you type.

When the correct street name appears in the list, tap the name to select the destination.

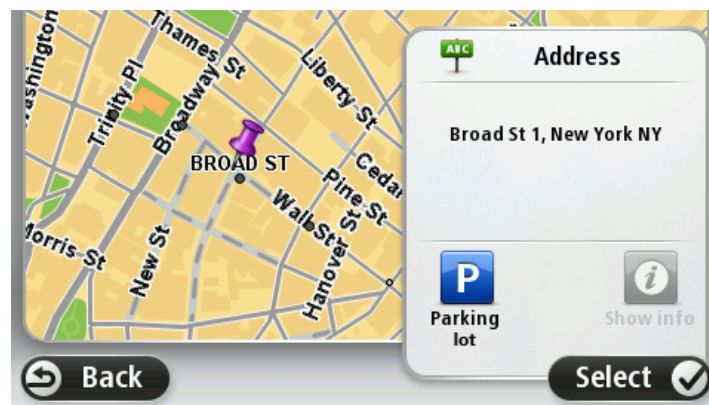


6. Enter the house number, then tap **Done**.



7. The location is shown on the map. Tap **Select** to continue or tap **Back** to enter another address.

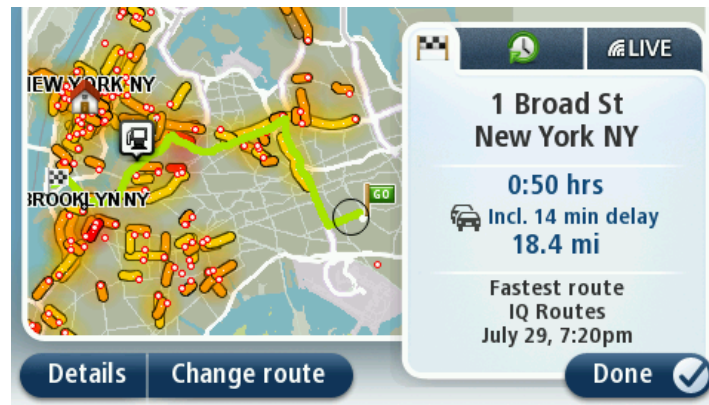
**Tip:** If you want your final destination to be a car park, tap **Car park** and select a location from the list of car parks close to your general destination.



8. When the new route is shown, tap **Done**.

For more information about the route, tap **Details**.

To change your route, for example, to travel via a particular location or to select a new destination, tap **Change route**.



Your device starts to guide you to your destination, using spoken instructions and on-screen directions.

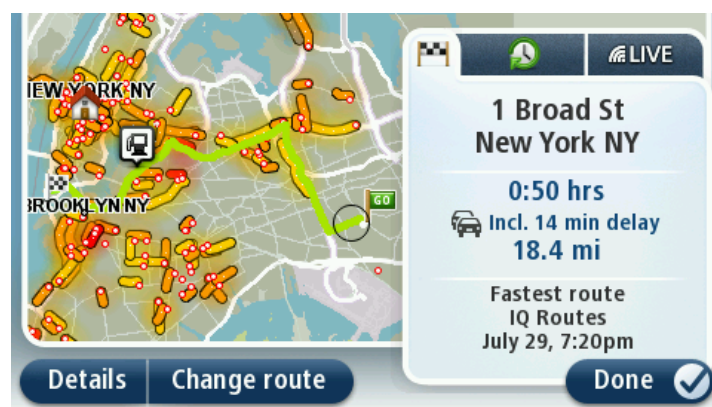
### Route summary

The route summary shows an overview of your route, the remaining distance to your destination and the remaining estimated trip time.

To view the route summary, tap the right-hand panel on the status bar in the Driving view or tap **View route** in the Main Menu and then tap **Show route summary**.

If you have HD Traffic or an RDS-TMC receiver, the route summary also shows traffic information about delays on your route.

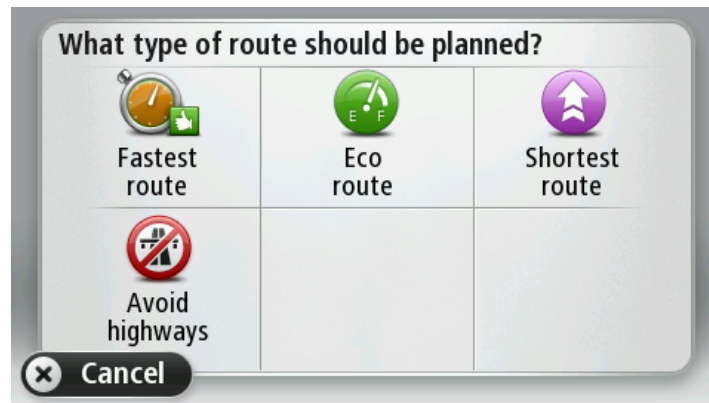
**Note:** To use a TomTom traffic information service, you may need a subscription or a receiver. Traffic services are not supported in all countries or regions. For more information, visit [tomtom.com/services](http://tomtom.com/services).





## Selecting a route type

Every time you plan a route, you can choose to be asked about the type of route you want to plan. To do this, tap **Settings** followed by **Route planning** and then tap **Ask me every time I plan**.



The types of route you can choose from are as follows:

- **Fastest route** - the route which takes the least time.
- **Eco route** - the most fuel-efficient route for your trip.
- **Shortest route** - the shortest distance between the locations you set. This may not be the quickest route, especially if the shortest route is through a town or city.
- **Avoid highways** - a route which avoids highways.

## Using arrival times

When you plan a route, your Mazda NB1 asks you if you need to arrive at a particular time.

Tap **YES** to enter a preferred arrival time.

Your Mazda NB1 calculates your arrival time and shows you whether you will arrive on time.

You can also use this information to work out when you need to leave. If your Mazda NB1 shows that you will arrive 30 minutes early, you can wait and leave in 30 minutes time, rather than arrive early.

Your arrival time is constantly recalculated during your trip. The status bar shows whether you will arrive on time or if you are going to be late.



**Status bar**

Tap **Status bar** in the Settings menu to enable or disable arrival time notifications.

To enable arrival time notifications select **Leeway**.

## Navigation menu options

When you tap **Navigate to** or **Drive to**, you can set your destination in many ways, not just by entering the address. The other options are listed below:



**Home**

Tap this button to navigate to your Home location.  
You will probably use this button more than any other.

---



**Favorite**

Tap this button to select a Favorite as your destination.

---



**Address**

Tap this button to enter an address as your destination.

---



**Recent destination**

Tap this button to select your destination from a list of places you have recently used as destinations.

---



**Point of Interest**

Tap this button to navigate to a Point of Interest (POI).

---



**Point on map**

Tap this button to select a point on the map as your destination using the map browser.

---



**Latitude Longitude**

Tap this button to enter a destination using latitude and longitude values.

---

## Planning a route in advance

You can use your Mazda NB1 to plan a route in advance, selecting your starting point and your destination.

Here are some more reasons to plan a route in advance:

- Find out how long a trip is going to take before you start.
- You can also compare trip times for the same route at different times of the day or on different days of the week. Your Mazda NB1 uses IQ Routes when planning a route. IQ Routes calculates routes based on the real average speeds measured on roads.
- Study the route of a trip you are planning.

- Check a route for someone who is coming to visit you and then explain the route to them in detail.

To plan a route in advance, follow these steps:

1. Tap the screen to bring up the Main menu.
2. Tap the arrow button to move to the next menu screen and tap **Plan route**.



This button is shown while there is no planned route on your Mazda NB1.

3. Select the starting point for your trip in the same way that you would select your destination.
4. Set the destination for your trip.
5. If Route planning settings are set to **Ask me every time I plan**, select the type of route you want to plan:
  - **Fastest route** - the route which takes the least time.
  - **Eco route** - the most fuel-efficient route for your trip.
  - **Shortest route** - the shortest distance between the locations you set. This may not be the quickest route, especially if the shortest route is through a town or city.
  - **Avoid highways** - a route which avoids highways.
6. Choose the date and time that you will make the trip you are planning.

Your Mazda NB1 uses IQ Routes to work out the best possible route at that time. This is useful to see how long a trip takes at different times of the day or on different days of the week.

Your Mazda NB1 plans the route between the two locations you selected.

## Viewing route information

You can access these options for the route you last planned by tapping **View route** in the Main Menu or the **Details** button on the route summary screen.

You can then select from the following options:



Tap this button for a list of all the turn instructions on the route.

This is very useful if you need to explain a route to someone else.

### Show instructions



Tap this button to see an overview of the route using the map browser.

### Show map of route



Tap this button to watch a demo of the trip. You can interrupt the demo at any time by tapping the screen.

---

#### Show route demo



Tap this button to open the route summary screen.

---

#### Show route summary



Tap this button to see a preview of your destination.

You can navigate to a parking lot near your destination, and view any available information about your destination, for example, the phone number.

---

#### Show destination



---

#### Show traffic on route

Tap this button to see all the traffic incidents on your route.

**Note:** This button is only shown if your device has either a traffic subscription or an RDS-TMC Receiver. Traffic information is not available in all countries or regions. For more information about TomTom traffic information services, go to [tomtom.com/services](http://tomtom.com/services).

# Voice control

---

## Voice control

There are two types of voice control.

The first type is provided by Mazda and you can read about it in the guide that came with your car.

The second type is provided by your navigation device and you can use it to plan routes and control other features of your navigation device. You do this by initially tapping the screen on the navigation device.

## About navigation device voice control

**Note:** Voice control is not supported on all devices or in all languages.

Instead of tapping the screen to control your Mazda NB1, you can use your voice to control your Mazda NB1.

For example, to increase the volume on your Mazda NB1, you can say, "Increase volume" or "Volume 50%."

To view the list of available commands, tap **Help** in the Main menu then tap **Product manuals** and then tap **What can I say**.

---

**Important:** Voice control requires a computer voice. When there are no computer voices installed on your Mazda NB1, this feature is not available.

To select a computer voice, tap **Voices** in the Settings menu, then tap **Change voice** and select a computer voice.

---

## Using voice control

Voice control is switched on by default if it is supported for your chosen language.

The following example shows how to use voice control to plan a trip to your Home address:

1. Tap the microphone button in the Driving view to turn on the microphone.



You see a screen with examples of commands you can say.

Tap **Help** in the Main menu then tap **Product manuals** followed by **What can I say** to see a full list of commands you can say.

2. When you hear "Say a command" followed by a tone, say a command of your choice. For example, you can say "Drive home." Your Mazda NB1 is only ready to listen after you hear the tone.

While you are speaking the microphone monitor shows how well the device can hear your voice:



A green bar means the device can hear your voice.

A red bar means your voice is too loud for the device to recognize individual words.

A gray bar means your voice is too quiet for the device to recognize individual words.

For some phrases, your Mazda NB1 repeats what you say and asks for confirmation.

**Tip:** For the best recognition of what you say, speak normally without trying to articulate words in an unnatural way. If there is excessive road noise, for example, you may need to speak in the direction of the microphone.

3. If the command is correct, say "Yes."

If the command is incorrect, say "No" and repeat the command after you hear the prompt and tone again.

Your Mazda NB1 plans a route from your current location to your destination.

**Tip:** To stop your Mazda NB1 from listening for further commands, say "Cancel." To go back one step, say "Back."

## Planning a trip using your voice

**Note:** It's not possible to plan a route using your voice for all maps in all countries, or in all languages.

You can navigate to any of the following types of places using your voice:

- An address, including home.
- Cities and towns and their centers.
- Favorites.
- POI categories.
- POIs for named brands of, for example, restaurants, gas stations, car rental companies and gyms.
- A recent destination.

To plan a route to an address using speech, do the following:

1. Tap the voice control button in the Driving view.



2. When you hear the tone, you can say, for example "Drive to an address."

**Tip:** Your device has either **Navigate to** or **Drive to** on the button in the Main Menu. When planning a route to an address using speech, say "Navigate to address" if the button shows **Navigate to** or "Drive to address" if the button shows **Drive to**.

3. Say the full address for your destination, for example, 112 Main Street, Riverside, California. Numbers can be pronounced naturally or one at a time. For example, 357 can be pronounced as "Three fifty seven" or "Three, five, seven."

Your Mazda NB1 tells you what it heard.

4. Say "Yes" if the address is correct. If shown a list of addresses, say the list number for the correct address or say "none of these."

If part of the address is incorrect, you can say something like "change the number," "change the street," "change the city" or "change the state" to correct the incorrect part.

To begin again, say "start over."

**Tip:** You may want to limit the search area for addresses to one state if you drive within the same state most of the time. To change the search area for addresses, tap **Settings** in the Main menu then tap **Voice control** and then tap **Set address search area**.

Your Mazda NB1 starts to guide you to your destination, using spoken instructions and on-screen directions.

#### **Tips:**

You can also use your voice to search for the nearest Point of interest (POI) category or a popular brand name by saying something like "Drive to the nearest doctor" or "Drive to the nearest Starbucks."

To select a Recent destination or a Favorite, say "Drive to a recent destination" or "Drive to a Favorite."

## **Entering addresses using your voice**

Even if you don't use voice control to start planning a trip, you can still use your voice to enter the address.

To start planning a trip tap **Navigate to** or **Drive to** in the Main menu, then tap **Address**, and then **Spoken Address**.



Tap this button to enter an address entirely using speech.

**Spoken address** helps you to enter information without tapping the screen.

### Spoken address

---

#### Tips

To make it easier to start entering an address using your voice, you can add this button to the Quick Menu on the Driving View. To do this, tap **Make your own menu** in the **Settings** menu and then tap **Drive to spoken address**.

Your Mazda NB1 recognizes places and street names when they are spoken in the local language using local pronunciation.

Spoken address entry is not possible for postal codes which must be entered using the keyboard.



# The Driving View

---

## About the Driving View

When your Mazda NB1 navigation device starts for the first time, you are shown the Driving View along with detailed information about your current position.

Tap the center of the screen at any time to open the Main Menu.

## The Driving View



1. Zoom button - tap the magnifying glass to show buttons for zooming in and out.
2. Quick menu - to enable the quick menu, tap **Make your own menu** in the Settings menu.
3. Your current position.
4. Road sign information or the next street name.
5. Traffic sidebar. Tap the sidebar to open the Traffic menu.

The traffic sidebar is only shown if your device has either an HD Traffic subscription or an RDS-TMC Receiver. Traffic information is not available in all countries or regions.

6. Microphone button for voice command and control.
7. The time, your current speed and the speed limit, if known. To see the difference between your preferred arrival time and your estimated arrival time, check the **Leeway** checkbox in the Status bar settings.

**Note:** Not all options may be available.

Tap this part of the status bar to switch between a 3D map and a 2D map.

8. The name of the street you are on.

9. Navigation instruction for the road ahead and the distance to the next instruction. If the second instruction is less than 150m after the first instruction, you see it shown immediately instead of the distance.

Tap this part of the status bar to repeat the last voice instruction and to change the volume. You can also tap here to mute the sound.

10. The remaining trip time, the remaining distance and your estimated arrival time.

Tap this part of the status bar to open the Route Summary screen.

To change the information shown in the status bar, tap **Status bar** in the Settings menu.

## Driving View Symbols



Sound muted - this symbol is shown when the sound has been muted.

To turn the sound back on, tap the middle panel in the status bar.



Enhanced Positioning Technology (EPT) - this symbol is shown when your device is using EPT to estimate your current location.

EPT automatically estimates your position when the GPS signal is lost while you are driving, such as when you are in a tunnel.

# Advanced lane guidance

## About lane guidance

**Note:** Lane guidance is not available for all junctions or in all countries.

Your Mazda NB1 helps you prepare for highway exits and junctions by showing the correct driving lane for your planned route.

As you approach an exit or junction, the lane you need is shown on the screen.

## Using lane guidance

There are two types of lane guidance:

- Lane images



To turn lane images off, tap **Settings** in the Main menu, then tap **Advanced settings**. Clear the checkbox for **Show lane images**.

**Tip:** Tap anywhere on the screen to return to the Driving View.

- Instructions in the status bar



**Tip:** If no lane guidance is shown in the status bar and all lanes are highlighted, you can use any lane.

# Changing your route

---

## Making changes to your route

After you plan a route, you may want to change the route or even the destination. There are various ways to change your route without the need to completely replan the entire trip.

To change the current route, tap **Change route** in the Main menu:



**Change route**

Tap this button to change the current route.

This button is only shown while there is a planned route on your Mazda NB1.

## Change route menu

To change the current route or your destination, tap one of the following buttons:



**Calculate alternative**

Tap this button to find an alternative to the current route.

This button is only shown while there is a planned route on your Mazda NB1.

This is a simple way to search for a different route to your current destination.

Your Mazda NB1 calculates a new route from your current location to reach your destination using completely different roads.

The new route is shown next to the original route so that you can select the route you want to use.



**Avoid roadblock**

Tap this button while driving on a planned route to avoid a roadblock or traffic congestion on the road ahead.

Your Mazda NB1 will suggest a new route which avoids the roads on your current route for the selected distance.

If the roadblock or traffic congestion suddenly clears, tap **Recalculate route** to replan your original route.

---

**Important:** Be aware that when a new route is calculated you might be asked to turn off the current road immediately.

---



**Minimize delays**

Tap this button to avoid traffic delays on a planned route.

It is not always possible to avoid all traffic delays. Though your device continuously checks for delays on your route, you can tap this button to manually start a check. Your device then calculates the best route to

avoid all or most of the delays.

**Note:** This button is only shown if your device has either a traffic subscription or an RDS-TMC Receiver. Traffic information is not available in all countries or regions.

For more information about TomTom traffic information services, go to [tomtom.com/services](http://tomtom.com/services).



#### Change destination

Tap this button to change the current destination.

When you change the destination, you are shown the same options and asked to enter the new address in the same way as when you plan a new route.



#### Avoid part of route

Tap this button to avoid part of the current route.

You are shown a list of the street names on your route. When you tap one of the street names, your Mazda NB1 calculates a detour to avoid the selected street. The route summary shows both the new route and your original route. Tap the panel at the right to select one of the routes and then tap **Done**.

If you do not want to use either of the routes shown in the route summary, tap **Change route** to find another way to change your route.



#### Add waypoint...

Tap this button to change your route by selecting a location you want to travel past, perhaps to meet someone along the way.

When you select a location to travel past, you are shown the same options and asked to enter the new address in the same way as when you plan a new route.

Your Mazda NB1 calculates the route to your destination via the selected location.

The selected location is shown on the map using a marker.

You receive a warning when you reach your destination and when you travel past a marked location.

---

## About waypoints

**Note:** This feature is not available on all models of TomTom navigation device.

You can choose to use waypoints for any of the following reasons:

- You want to travel along a certain road or through a certain area on the way to your destination.
- You want to make stops before reaching your final destination.

Your route can include the following types of waypoints:

- Waypoints with notification - a waypoint that you are likely to want to stop and get out at, for example, a POI, a gas station or a friend's house. You are notified when nearing and arriving at the waypoint with voice instructions or a message.

- Waypoints without notification - a waypoint that you are using to help guide your route, for example, you want to travel from Amsterdam to Rotterdam using a certain highway. You are not notified when nearing the waypoint.

## Adding the first waypoint to your route

To add the first waypoint to your route, do the following:

1. Tap the screen to bring up the Main menu.
2. Tap **Change route**.
3. Tap **Add waypoint**.

**Tip:** You can also tap **View map** and then tap **Add waypoint** in the cursor menu. If your device supports Voice control, you also speak commands to add waypoints.

4. Choose the location for your waypoint from a choice of Home, Favorite, Address, Recent destination, POI or you can perform a search.

On the route summary screen, a message confirms that the route is being recalculated to include the waypoint. On the Change route menu, the Travel via button changes to show that you now have one waypoint on your current route.

**Note:** All waypoints are added initially as waypoints with notification. The maximum number of waypoints you can add is four.

## Adding further waypoints to your route

To add more waypoints to your route after the first one has been added, do the following:

1. Tap the screen to bring up the Main menu.
2. Tap **Change route**.
3. Tap **Manage waypoints**.

**Tip:** If your device supports Voice control, you also speak commands to add waypoints.

4. Tap **Add**.
5. Choose the location for your waypoint from a choice of Home, Favorite, Address, Recent destination, POI or you can perform a search.

A message tells you where in the list of waypoints the new one has been inserted.

6. Tap **Done**.

On the route summary screen, a message confirms that the route is being recalculated to include your waypoints.

7. Repeat to add more waypoints.

On the Change route menu, the Manage waypoints button changes to show that you now have several waypoints on your current route.

**Note:** All waypoints are added initially as waypoints with notification.

## Changing the order of waypoints

Waypoints are automatically added in an optimized order but you can still change the order manually if you need to. To change the order of waypoints, do the following:

1. Tap the screen to bring up the Main menu.
2. Tap **Change route**.
3. Tap **Manage waypoints**.  
You see a list of your waypoints.
4. Tap the waypoint you want to move up or down.  
You see a screen with the name of your waypoint at the top.
5. Tap **Move up** or **Move down**.  
Your waypoint changes its position in the list and you are immediately returned to your list of waypoints.

**Tip:** You cannot move an unvisited waypoint into a list of already visited waypoints.

## Deleting a waypoint

To delete a waypoint, do the following:

1. Tap the screen to bring up the Main Menu.
2. Tap **Change route**.
3. Tap **Manage waypoints**.  
You see a list of your waypoints.
4. Tap the waypoint you want to delete.  
You see a screen with the name of your waypoint at the top.
5. Tap **Delete**.  
Your waypoint is deleted and you are immediately returned to your list of waypoints.

## Changing notification settings for a waypoint

If a waypoint has notification switched on, you see an icon next to it in your list of waypoints. To switch notification on or off for a waypoint, do the following:

1. Tap the screen to bring up the Main menu.
2. Tap **Change route**.
3. Tap **Manage waypoints**.  
You see a list of your waypoints.
4. Tap the waypoint that you want to change the notification setting for.  
You see a screen with the name of your waypoint at the top.
5. Tap **Switch on/off notification**.



The notification setting changes for your waypoint and you are immediately returned to your list of waypoints.

**Tip:** If a waypoint has already been visited, you cannot switch notification on or off.

## Reactivating a waypoint

**Note:** You can only reactivate a waypoint that has already been visited. Visited waypoints are grayed out.

To reactivate a waypoint, do the following:

1. Tap the screen to bring up the Main menu.
2. Tap **Change route**.
3. Tap **Manage waypoints**.

You see a list of your waypoints.

4. Tap the visited waypoint that you want to reactivate.

You see a screen with the name of your waypoint at the top.

5. Tap **Reactivate**.

The waypoint is deleted and reinserted into the list of waypoints that haven't yet been visited.

# View map

---

## About viewing the map

You can view the map in the same way as you might look at a traditional paper map. The map shows your current location and many other locations such as Favorites and POIs.

To view the map in this way, tap **View map** or **View route** in the Main menu.

You view different locations on the map by moving the map across the screen. To move the map, touch the screen and drag your finger across the screen.

To select a location on the map, tap the location on the map. The cursor highlights the location and displays useful information about the location in an information panel. Tap the information panel to create a Favorite or plan a route to that location.

## View map



1. The scale bar
2. Traffic - current traffic incidents. Use the Options button to select whether traffic information is shown on the map. When traffic information is shown on the map, POIs and Favorites are not shown.

**Note:** To use a TomTom traffic information service, you may need a subscription. Traffic services are not supported in all countries or regions. For more information, visit [tomtom.com/services](http://tomtom.com/services).

3. Marker

Markers point to your current location (blue), your home location (yellow) and your destination (red). The marker shows the distance to the location.

Tap a marker to center the map on the location pointed to by the marker.

You can also set your own marker. Tap the cursor button, then tap **Set marker position** to place a green marker at the cursor position.

To turn markers off, tap **Options**, then **Advanced** and clear the **Markers** checkbox.

4. Options button

5. The cursor with street name balloon

Tap the button in the street name balloon to open the cursor menu. You can navigate to the cursor position, make a Favorite of the cursor position, or find a Point of Interest near the cursor position.

6. The Find button

Tap this button to find specific addresses, favorites or Points of Interest.

7. The zoom bar

Zoom in and out by moving the slider.

## Options

Tap the **Options** button to set the information shown on the map and show the following information:

- **Traffic** - select this option to show traffic information on the map. When traffic information is shown, POIs and Favorites are not shown.

**Note:** To use a TomTom traffic information service, you may need a subscription. Traffic services are not supported in all countries or regions. For more information, visit [tomtom.com/services](http://tomtom.com/services).

- **Names** - select this option to show street and city names on the map.
- **Points of interest** - select this option to show POIs on the map. Tap **Choose POIs** to choose which POI categories are shown on the map.
- **Images** - select this option to show satellite images of the area being viewed. Satellite images are not available in every map or for every location on the map.
- **Favorites** - select this option to show your Favorites on the map.

Tap **Advanced** to show or hide the following information:

- **Markers** - select this option to enable markers. Markers point to your current location (blue), your home location (yellow) and your destination (red). The marker shows the distance to the location.

Tap a marker to center the map on the location the marker is pointing to.

To create your own marker, tap the cursor button. Then tap **Set marker position** to place a green marker at the cursor position.

To disable markers, tap **Options**, then tap **Advanced** and deselect **Markers**.

- **Coordinates** - select this option to show GPS coordinates in the lower left corner of the map.

## Cursor menu

The cursor can be used to do more than highlight a location on the map.

Position the cursor on a location on the map, then tap **Cursor** and then tap one of the following buttons:



Tap this button to plan a route to the cursor position on the map.

**Navigate there**



Tap this button to view information about the location on the map such as the address.

**View location**



Tap this button to create your own green marker and place it at the cursor position.

If a green marker exists, this button changes to **Delete marker**.

**Set marker position**



Tap this button to find a POI near the cursor position on the map.

For example, if the cursor currently highlights a restaurant location on the map, you can search for a nearby parking garage.

**Find POI nearby**



Tap this button to make a map correction for the cursor position on the map.

You can make the correction only on your own map or you can share the correction with the TomTom Map Share community.

**Correct location**



Tap this button to create a Favorite at the cursor position on the map.

**Add as Favorite**



Tap this button to create a POI at the cursor position on the map.

**Add as POI**



**Travel via...**

Tap this button to travel via the cursor position on the map as part of your current route. Your destination remains the same as before but your route now includes this location.

This button is only available while there is a planned route.

---



Tap this button to center the map on the cursor position.

**Center on map**

---

# Map corrections

---

## About Map Share

Map Share helps you correct map errors. You can correct several types of map error.

To make corrections to your own map, tap **Map corrections** in the Settings menu.

**Note:** Map Share is not available in all regions. For more information, go to [tomtom.com/mapshare](http://tomtom.com/mapshare).

## Correcting a map error

---

**Important:** For safety reasons, do not enter the full details of a map correction while you are driving. Mark the location of the map error instead and enter the full details later.

---

To correct a map error, do the following:

1. Tap **Map corrections** in the Settings menu.



2. Tap **Correct a map error**.
3. Select the type of map correction you want to report.
4. Select how you want to select the location.
5. Select the location. Then tap **Done**.
6. Enter the details of the correction. Then tap **Done**.
7. Tap **Send**.

The correction is saved.

## Types of map correction

To make a correction to your map, tap **Map corrections** in the Settings menu, then tap **Correct a map error**. There are several types of map correction available.



**(Un)block street**

Tap this button to block or unblock a street. You can block or unblock the street in one or both directions.

For example, to correct a street near to your current location, do the following:

1. Tap **(Un)block street**.
2. Tap **Near you** to select a street near your current location. You can

---

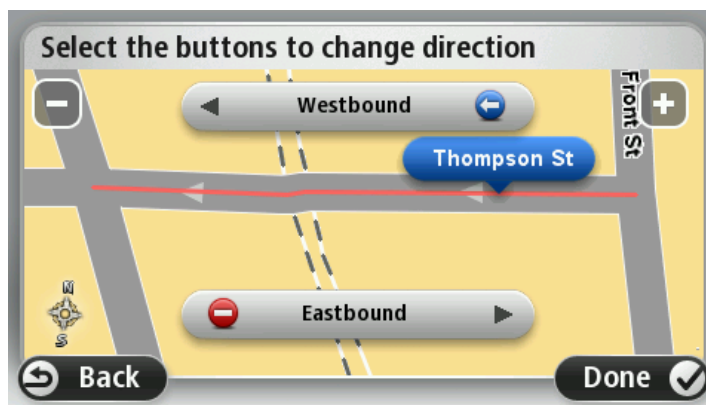
select a street by name, a street near your Home location or a street on the map.

3. Select the street or section of a street you want to correct by tapping it on the map.

The street you select is highlighted and the cursor shows the name of the street.

4. Tap **Done**.

Your device shows the street and whether the traffic is blocked or allowed in each direction.



5. Tap one of the direction buttons to block or unblock the flow of traffic in that direction.

6. Tap **Done**.



#### Reverse traffic direction

Tap this button to correct the traffic direction of a one-way street, where the direction of traffic is different to the direction shown on your map.

**Note:** Reverse traffic direction only works for one-way streets. If you select a two-way street you will be given the chance to block/unblock the street rather than changing the direction.



#### Edit street name

Tap this button to change the name of a street on your map.

For example, to rename a street near to your current location:

1. Tap **Edit street name**.
2. Tap **Near you**.
3. Select the street or section of a street you want to correct by tapping it on the map.

The street you select is highlighted and the cursor shows the name of the street.

4. Tap **Done**.
  5. Type the correct street name.
  6. Tap **Done**.
-



### Change turn restrictions

Tap this button to change and report incorrect road turn restrictions.



### Change road speed

Tap this button to change and report the road speed limit.



### Add or remove rotary

Tap this button to add or remove a rotary.



### Add missing POI

Tap this button to add a new Point of Interest (POI).

For example to add a new restaurant near to your current location:

1. Tap **Add missing POI**.
2. Tap **Restaurant** in the list of POI categories.
3. Tap **Near you**.
4. Select the location of the missing restaurant.

You can select the location by entering the address or by selecting the location on the map. Select **Near you** or **Near home** to open the map at your current location or at your Home location.

5. Tap **Done**.
6. Type the name of the restaurant then tap **OK**.
7. If you know the telephone number of the restaurant you can type it, then tap **OK**.

If you don't know the number, just tap **OK** without typing a number.



### Edit POI

Tap this button to edit an existing POI.

You can use this button to make the following changes to a POI:

- Delete the POI.
- Rename the POI.
- Change the telephone number of the POI.
- Change the category that a POI belongs to.
- Move the POI on the map.



### Comment on POI

Tap this button to enter a comment about a POI. Use this button if you cannot edit the error with the POI using the **Edit POI** button.





### **Correct house number**

Tap this button to correct the location of a house number. Enter the address that you wish to correct and then indicate on the map the correct location of that house number.



### **Existing street**

Tap this button to edit an existing street. Once you have selected the street, you can select an error to report. You can select more than one type of error for a street.



### **Missing street**

Tap this button to report a missing street. You have to select the start and end points of the missing street.



### **City**

Tap this button to report an error about a city, town or village. You can report the following types of error:

- City is missing
- Wrong city name
- Alternative city name
- Other



### **Highway entrance/exit**

Tap this button to report an error about a highway entrance or exit.



### **ZIP code**

Tap this button to report an error about a ZIP code.



### **Other**

Tap this button to report other types of corrections.

These corrections are not immediately applied to your map but are saved in a special report.

You can report missing streets, errors in highway entrances and exits and missing rotaries. If the correction you want to report is not covered by any of these report types, enter a general description then tap Other.

# Sounds and voices

---

## About sounds and voices

Your Mazda NB1 uses sound for some or all of the following:

- Driving directions and other route instructions
- Traffic information

**Note:** To use a TomTom traffic information service, you may need a subscription. Traffic services are not supported in all countries or regions. For more information, visit [tomtom.com/services](https://tomtom.com/services).

- Warnings that you set

There are two types of voice available for your Mazda NB1:

- Voices that speak street names

Voices that speak street names are generated by your Mazda NB1. They provide route instructions and read aloud city and street names, traffic and other useful information.

- Human voices

These are recorded by an actor and only provide route instructions.

## About voices that speak street names

Your Mazda NB1 uses text-to-speech technology to read the street names on your map as it guides you on your route.

A voice that speaks street names analyzes the whole phrase or sentence before speaking, to ensure that the sentence sounds as close as possible to natural speech.

This type of voice can also recognize and pronounce foreign towns and street names. For example, the English voice can read and pronounce French street names.

## Selecting a voice

To select a different voice on your Mazda NB1, either tap **Change voice** in the **Settings** menu or tap **Voices**, then tap **Change voice** and select the required voice.

## Changing the volume level

You can change the volume on your Mazda NB1 in the Driving view.

Tap the central panel on the status bar and move the slider to adjust the volume. The last route instruction is played so you can hear the new volume level.

# Settings

---

## About Settings

You can change the way your Mazda NB1 looks and behaves. Most of the settings on your device can be accessed by tapping **Settings** in the Main menu.

## 2D/3D settings



### 2D/3D settings

Tap this button to set the default view of the map. To switch between 2D and 3D views while driving, tap the center part of the status bar in Driving View.

It is sometimes easier to view the map from above, such as when navigating a complex road network.

The 2D view shows a two dimensional view of the map as though viewed from above.

The 3D view shows a three dimensional view of the map as though you are driving through the landscape.

The following buttons are available:

- **In 2D view: rotate map in direction of travel** - tap this button so the map is rotated automatically with the direction you are traveling always at the top.
- **Switch to 3D view when following a route** - tap this button to show the map automatically in 3D view when you are following a route.

## Advanced settings



### Advanced settings

Tap this button to select the following advanced settings:

- **Show house number before street name** - when this setting is selected, addresses are shown with the house number followed by the street name, such as 1600 Pennsylvania Avenue.
- **Show street names** - when this setting is selected, street names are shown on the map in the Driving View. You do not need to select this option when your Mazda NB1 is set to read aloud street names using a computer voice.
- **Show next street name** - when this setting is selected, the name of the next street on your route is shown at the top of the Driving view.
- **Show current street name on map** - when this setting is selected, the name of the street you are on is shown at the bottom of the Driving view.
- **Show location preview** - when this setting is selected, a graphical

preview of your destination is shown during route planning.

- **Enable automatic zooming in 2D view**
- **Enable automatic zooming in 3D view**
- **Show lane images** - when this setting is selected, a graphical view of the road ahead shows which lane you need when you approach a junction or highway exit. This feature is not available for all roads.
- **Show tips** - this setting switches tips on and off.
- **Automatically adjust clock for time zone** - when this setting is selected, your clock is automatically adjusted for your time zone.

## Change car symbol



### Change car symbol

Tap this button to select the car symbol that shows your current location in the Driving view.

## Home location



### Home location

Tap this button to set or change your Home location. You enter the address in the same way as you do when you plan a route.

Your Home location provides an easy way to plan a route to an important location.

For most people, your Home location will be your home address. However, you might prefer to set the location to another regular destination, such as your place of work.

## Favorites

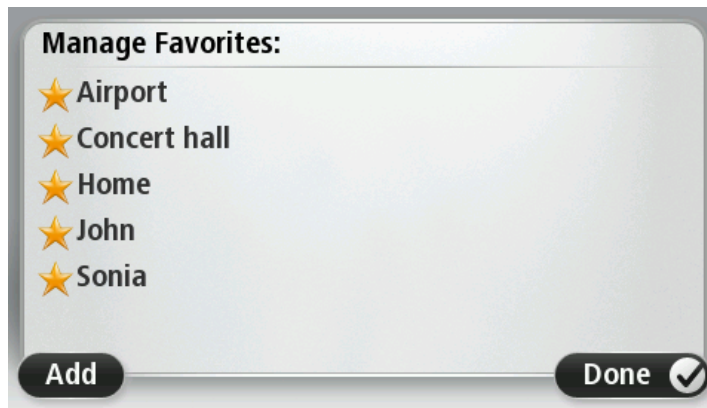


### Favorites

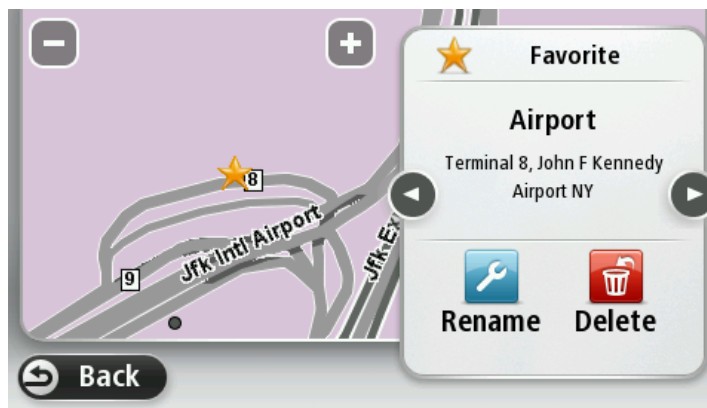
Tap this button to add, rename or delete Favorites.

Favorites provide an easy way to select a location without the need to enter the address. They do not need to be favorite places, they can simply be seen as a collection of useful addresses.

To create a new Favorite, tap **Add**. Then enter the location address in the same way that you enter an address when you plan a route.



To view or change an existing Favorite, tap one of the items in the list. To see more Favorites on the map, tap the left or right buttons.



## Keyboard



**Keyboard**

Tap this button to select the keyboards that will be available for your use and the layout of the Latin keyboard.

You use the keyboard to enter names and addresses, such as when you plan a route or search for the name of a town or a local restaurant.

## Make your own menu



**Make your own menu**

Tap this button to add up to six buttons to your own personalized menu.

If there are only one or two buttons in your menu, both buttons are shown in the Driving view.

If you have three or more buttons in your menu, then a single button is shown in the Driving view which opens your menu when tapped.

## Map colors



Map colors

Tap this button to select the color schemes for day and night map colors.

Tap **Search** to search for a color scheme by typing the name.

## Manage POIs



Manage POIs

Tap this button to manage your own Point of Interest (POI) categories and locations.

You can set your Mazda NB1 to let you know when you are near to selected POI locations. For example, you could set the device to let you know when you are approaching a gas station.

You can create your own POI categories and add your own POI locations to these categories.

You can, for example, create a new POI category called Friends. You could then add all your friends' addresses as POIs in this new category.

Tap the following buttons to create and maintain your own POIs:

- **Add POI** - tap this button to add a location to one of your own POI categories.
- **Warn when near POI** - tap this button to set your Mazda NB1 to warn you when you are near selected POIs.
- **Delete POI** - tap this button to delete one of your own POI categories.
- **Edit POI** - tap this button to edit one of your own POIs.
- **Add POI category** - tap this button to create a new POI category.
- **Delete POI category** - tap this button to delete one of your own POI categories.

## Reset factory settings

---

**Important:** If you sell your car, you should remove all personal information from your navigation device first. To remove your personal information, tap **Settings** and then tap **Reset factory settings**.

---



Reset factory settings

Tap this button to delete all your personal settings and restore the standard factory settings to your Mazda NB1.

This is not a software update and will not affect the version of the software application installed on your Mazda NB1.

---

**Important: This feature deletes all your personal settings!**

If you want to keep your personal information and settings, you should

perform a full backup of your Mazda NB1 before you reset the device. You can then restore all your personal information and settings after you reset the device.

This includes items such as your Home and Favorite locations, your personal menu and your POI categories and POI locations.

---

## Planning settings



### Planning settings

Tap the **Planning settings** button to set the way your Mazda NB1 calculates the routes that you plan. The settings for planning consist of several options that are spread over several screens. Each setting is described below.

### Route planning

Set the type of route you want your Mazda NB1 to calculate.

Tap **IQ Routes** to set if you want the device to use IQ Routes information to help find the best route.

### Fastest route

Choose whether you want to avoid highways.

### Replanning settings

**Note:** This setting is only available if your device has either a traffic subscription or an RDS-TMC Receiver. Traffic information is not available in all countries or regions. For more information about TomTom traffic information services, go to [tomtom.com/services](http://tomtom.com/services).

Set whether you want your Mazda NB1 to replan the current route if a faster route is found while you are driving. This is useful if traffic builds up or clears further ahead on your route. Choose from the following settings:

- **Always switch to that route** - select this option to receive no messages when a faster route is found. The current route is automatically re-calculated to be the fastest one.
- **Ask me if I want that route** - select this option to be asked if you want to take the new route. When asked if you want to take the alternative route, tap **Yes** to have the current route re-calculated as the fastest one. Tap **No** if you don't want to take alternative route.

Tap **Info** to see a summary of both the original and the alternative routes. You can then tap **Done** to take the fastest route or **Current route** to remain on your original route.

- **Never change my route** - select this option to receive no messages and simply be shown the new route on the screen.

### Map information settings

Set whether you want to be warned if your route passes through an area where your map contains only limited information.

## Toll road, ferry, carpool lanes and unpaved road settings

Set how your Mazda NB1 should manage each of these four road features when the device calculates a route.

Carpool lanes are sometimes known as High Occupancy Vehicle Lanes and are not present in every country. To travel on these lanes, you may need to have more than one person in the car, for example, or the car may need to use environmentally-friendly fuel.

## Route summary

Set whether you want the route summary screen to close automatically after you plan a route. If you select **No**, then you will need to tap **Done** to close the route summary screen every time you plan a route.

## Safety settings



**Safety settings**

Tap this button to select the safety features you want to use on your Mazda NB1.

## Show POI on map



**Show POI on map**

Tap this button to select the types of Point of Interest (POI) you want to see on the map.

1. Tap **Show POI on map** in the Settings menu.
2. Select the POI categories you want to be shown on the map.  
Tap **Search** and use the keyboard to search for a category name.
3. Select whether you want POIs to be shown in 2D or 3D views of the map.
4. Tap **Done**.

Point of Interest locations are shown on the map as symbols.

## Status bar



**Status bar**

**Note:** Not all options may be available.

Tap this button to select the information you want to see on the status bar:

- **Horizontal** - show the status bar at the bottom of the Driving view.
- **Vertical** - show the status bar on the right-hand side of the Driving view.
- **Maximum speed**

---

**Important:** The speed limit is shown next to your current speed. If you



drive faster than the speed limit, you see a warning indicator in the status bar, for example the status bar pane turns red.

Information about speed limits is not available for all roads.

---

- **Remaining distance** - the distance to your destination.
- **Leeway** - your Mazda NB1 shows how late or early you will arrive, compared with your preferred arrival time that was set when you planned the route.

## Maps



**Maps**

Tap this button to select the map you want to use for route planning and navigation.

Although you can store more than one map on the device, you can only use one map at a time for planning and navigation.

To switch from the current map to plan a route in another country or region, simply tap this button.

**Note:** The first time you switch to a map, you may need to connect to your MyTomTom account and activate the map.

## Turn off voice guidance / Turn on voice guidance



**Turn off Voice guidance**

Tap this button to switch off voice guidance. You will no longer hear spoken route instructions but you will still hear information such as traffic information and warnings.

Voice guidance is also switched off if you tap **Turn off sound** in the Settings menu.

**Note:** If you change the voice on your Mazda NB1, then voice guidance is automatically switched on for the new voice.



**Turn on Voice guidance**

Tap this button to switch on voice guidance and hear spoken route instructions.

## Units



**Units**

Tap this button to set the units used on your Mazda NB1 for features such as route planning.

## Version information



### Version information

Tap this button to find technical information on your Mazda NB1, such as the device serial number, application version and the map version.

You can also view the current status for GPS reception.

## Voices



### Voice settings

Tap this button to disable or enable voice control and find out what to say.

You can also set the address search area so that you can search within a U.S. state or in all U.S. states.



### Change voice

Tap this button to change the voice that gives spoken directions and other route instructions.

A wide range of voices are available. There are voices that speak street names and are used for voice control and there are human voices which have been recorded by actors.

# Points of Interest

---

## About Points of Interest

Points of Interest or POIs are useful places on the map.

Here are some examples:

- Restaurants
- Hotels
- Museums
- Parking garages
- Gas stations

## Creating POIs

**Tip:** For help on managing third party POIs, search for "Third party POIs" at: [tomtom.com/support](http://tomtom.com/support).

1. Tap the screen to open the Main menu.
2. Tap **Settings**.
3. Tap **Manage POIs**.
4. If there are no POI categories or the one you want to use does not exist, tap **Add POI category** and create a new category.



Every POI must be assigned to a POI category. This means you need to have created at least one POI category before you can create your first POI.

You can only add POIs to POI categories you have created.

For more information on creating POI categories, read **Managing POIs**.

5. Tap **Add POI**.
6. Select the POI category you want to use for the new POI.
7. Tap a button to enter the POI address in the same way that you plan a route.

The POI is created and saved in the selected category.



**Home**

Tap this button to set your Home location as a POI.

This is useful if you decide to change your Home location but first want to create a POI using the current Home address.



**Favorite**

Tap this button to create a POI from a Favorite.

You might want to create a POI from a Favorite because you can only create a limited number of Favorites. If you want to create more Favorites you need to delete some Favorites. To avoid losing a Favorite, save the location as a POI before you delete the Favorite.

---



**Address**

Tap this button to enter an address as a new POI.

When you enter an address, you can choose from four options.

- **City center**
- **Street and house number**
- **ZIP code**

**Cross street or intersection**

---



**Recent destination**

Tap this button to select a POI location from a list of places you have recently used as destinations.

---



**Point of Interest**

Tap this button to add a Point of Interest (POI) as a POI.

For example, if you are creating a category of POIs for your favorite restaurants, use this option instead of entering the addresses of the restaurants.

---



**My location**

Tap this button to add your current location as a POI.

For example, if you stop somewhere interesting, you can tap this button to create a new POI at the current location.

---



**Point on map**

Tap this button to create a POI using the map browser.

Use the cursor to select the location of the POI, then tap **Done**.

---



**Latitude Longitude**

Tap this button to create a POI by entering latitude and longitude values.

---



**Spoken address**

Tap this button to create a POI by saying the address.

---

## Using POIs to plan a route

When you plan a route, you can use a POI for the destination.

The following example shows how to plan a route to a parking lot in a city:

1. Tap **Navigate to** or **Drive to** in the Main menu.
2. Tap **Point of Interest**.
3. Tap **POI in city**.

**Tip:** The last POI you viewed on your Mazda NB1 is also shown in the menu.

4. Enter the name of the town or city and select it when it is shown in the list.
5. Tap the arrow button to expand the list of POI categories.

**Tip:** If you already know the name of the POI you want to use, you can tap **Search by name** to enter the name and select this location.

6. Scroll down the list and tap **Parking lot**.
7. The parking lot closest to your destination is shown at the top of the list.
8. The following list explains the distances shown next to each POI. How the distance is measured varies depending on how you initially searched for the POI:
  - POI near you - distance from your current location
  - POI in city - distance from the city center
  - POI near Home - distance from your Home location
  - POI along route - distance from your current location
  - POI near destination - distance from your destination
9. Tap the name of the parking lot you want to use and tap **Done** when the route has been calculated.

Your Mazda NB1 starts to guide you to the parking lot.

## Showing POIs on the map

You can select the types of POI locations you want to see on your maps.

1. Tap **Show POI on map** in the Settings menu.
2. Select the categories you want to be shown on the map.
3. Tap **Done**.
4. Select whether you want to see POI locations in 2D and 3D views of the map.
5. Tap **Done**.

The types of POI you have selected are shown as symbols on the map.

## Calling a POI

Many of the POIs on your Mazda NB1 include phone numbers. This means that you can use your Mazda NB1 to find out the phone number for a POI, call them using a phone and then plan a route to the location of the POI.

For example, you can search for a cinema, call to book a ticket and then plan a route to the cinema.

1. Tap **Navigate to** or **Drive to** in the Main menu.
2. Tap **Point of Interest**.
3. Select how you want to search for the POI.

For example, if you want to search for a POI on your route, tap **POI along route**.

4. Tap the type of POI you want to navigate to.

For example, if you want to call a cinema to reserve a ticket, tap **Cinema** and then select the name of the cinema you want to call. Then tap **Show info** to see the phone number.

5. Call the POI on a phone to, for example, reserve tickets or check their opening hours.
6. Tap **Select**.

Your Mazda NB1 starts navigating to the POI.

## Setting warnings for POIs

You can set a warning sound or message to be played or displayed when you approach a selected type of POI, such as a gas station.

The following example will show how to set a warning sound to be played when you are 250 yards from a gas station.

1. Tap **Manage POIs** or **Warn when near POI** in the Settings menu.
2. Scroll down the list and tap **Gas station**.

**Tip:** To remove a warning, tap on the category name and then tap **Yes**. POI categories which have been set with a warning have a sound symbol next to the category name.

3. Set the distance as 250 yards and tap **OK**.
4. Select **Sound effect** and then tap **Next**.
5. Select the warning sound for the POI and then tap **Next**.
6. If you only want to hear the warning when the POI is directly on a planned route, select **Warn only if POI is on route**. Then tap **Done**.

The warning is set for the selected POI category. You will hear a warning sound when you are 250 yards from a gas station on your route.

## Manage POIs

Tap **Manage POIs** to manage your POI categories and locations.



You can set your Mazda NB1 to let you know when you are near to selected POI locations. In this way you could, for example, set the device to let you know you when you are approaching a gas station.

You can create your own POI categories and add your own POI locations to these categories.

This means you can, for example, create a new POI category called Friends. You could then add all your friends' addresses as POIs in this new category.

Tap the following buttons to create and maintain your own POIs:

- **Add POI** - tap this button to add a location to one of your own POI categories.
- **Warn when near POI** - tap this button to set your Mazda NB1 to warn you when you are near selected POIs.
- **Delete POI** - tap this button to delete one of your own POI categories.
- **Edit POI** - tap this button to edit one of your own POIs.
- **Add POI category** - tap this button to create a new POI category.
- **Delete POI category** - tap this button to delete one of your own POI categories.

# Help

---

## About getting help

Tap **Help** in the Main menu to navigate to emergency services centers and other special services.

For example, if you are involved in a car accident, you could use the Help menu to find the contact details for the nearest hospital, call them using a phone and tell them your exact location.

---

**Tip:** If you do not see the Help button in the Main menu, tap **Settings** and then **Safety settings**. Clear the checkbox for **Show only essential menu options while driving**.

---

## Using Help to drive to a local service

To use Help to locate a service center and navigate from your current location to the center, do the following:

1. Tap the screen to show the Main Menu.
2. Tap **Help**.
3. Tap **Drive to help**.
4. Select the type of service you require, for example, Nearest hospital.
5. Select a center from the list; the nearest is shown at the top of the list.

Your Mazda NB1 shows a description of the location.

6. To navigate your way to the center by car, tap **Navigate there**.

Your Mazda NB1 starts guiding you to your destination.

## Help menu options

**Note:** In some countries, information may not be available for all services.



Tap this button to plan a driving route to a service center.

**Drive to help**



Tap this button to see your current location on the map.

**Where am I?**

---





Tap this button to read a selection of guides, including a First Aid guide.

### **Safety and other guides**

---



Tap this button to read a selection of guides relating to your navigation device. You can also access on-device help using this button.

### **Product manuals**

---

# Favorites

---

## About Favorites

Favorites provide an easy way to select a location without the need to enter the address. They do not need to be favorite places, they can simply be seen as a collection of useful addresses.

## Creating a Favorite

To create a Favorite, do the following:

1. Tap the screen to bring up the Main menu.
2. Tap **Settings** to open the Settings menu.
3. Tap **Favorites**.
4. Tap **Add**.

Select the type of the Favorite by tapping one of the buttons described below:



**Home**

You can set your Home location as a Favorite.



**Favorite**

You cannot create a Favorite from another Favorite. This option will always be unavailable in this menu.

To rename a Favorite, tap **Favorites** in the Settings menu.



**Address**

You can enter an address as a Favorite.



**Recent destination**

Create a new Favorite by selecting a location from a list of your recent destinations.



**Point of Interest**

If you visit a POI you particularly like, for example a restaurant, you can add it as a Favorite.



Tap this button to add your current location as a Favorite.

For example, if you stop somewhere interesting, while you are there you can tap this button to create the Favorite.

---

#### My location



Tap this button to create a Favorite using the Map Browser.

Select the location of the Favorite using the cursor, then tap **Done**.

---

#### Point on map



Tap this button to create a Favorite by entering latitude and longitude values.

---

#### Latitude Longitude



Tap this button to create a Favorite by saying the address.

---

#### Spoken address

Your Mazda NB1 suggests a name for your new Favorite. To enter a new name, there is no need to delete the suggested name, you just start typing.

**Tip:** It is a good idea to give your Favorite a name that is easy to remember.

5. Tap **OK**.

Your new favorite appears in the list.

After you have added two or more Favorites, you are asked whether you make regular trips to the same locations. If you tap **YES**, you can enter these destinations as your favorite destinations. Every time you switch on your device, you can immediately select one of these locations as your destination. To change these destinations or select a new destination, tap **Start-up** in the Settings menu, then select **Ask for a destination**.

### Using a Favorite

You can use a Favorite as a way of navigating to a place without having to enter the address. To navigate to a Favorite, do the following:

1. Tap the screen to bring up the Main menu.
2. Tap **Navigate to** or **Drive to**.
3. Tap **Favorite**.
4. Select a Favorite from the list.

Your Mazda NB1 calculates the route for you.

5. When the route is calculated, tap **Done**.

Your Mazda NB1 will immediately start guiding you to your destination with spoken instructions and visual instructions on the screen.

## Changing the name of a Favorite

To change the name of a Favorite, do the following:

1. Tap the screen to bring up the Main menu.
2. Tap **Settings** to open the Settings menu.
3. Tap **Favorites**.
4. Tap the Favorite you want to rename.

**Tip:** Use the left and right arrows to choose another Favorite from your list.

5. Type in the new name and then tap **OK**.
6. Tap **Done**.

## Deleting a Favorite

To delete a Favorite, do the following:

1. Tap the screen to bring up the Main menu.
2. Tap **Settings** to open the Settings menu.
3. Tap **Favorites**.
4. Tap the Favorite you want to delete.

**Tip:** Use the left and right arrows to choose another Favorite from your list.

5. Tap **Yes** to confirm the deletion.
6. Tap **Done**.

# Traffic

---

## About RDS-TMC

The Traffic Message Channel (TMC), also known as RDS-TMC, transmits traffic information as a radio signal and is available free of charge in many countries.

TMC is not a TomTom Service, but is available when using the TomTom RDS-TMC Traffic Receiver.

**Note:** TomTom is not responsible for the availability or quality of traffic information provided by the Traffic Message Channel.

The Traffic Message Channel (TMC) is not available in all countries. To check the availability of TMC services in your country, go to [tomtom.com/5826](http://tomtom.com/5826).

## Safety Notice

Some navigation devices contain a GSM/GPRS module which can interfere with electrical devices such as cardiac pacemakers, hearing aids and aviation equipment.

Interference with these devices may endanger the health or life of you or others.

If your device includes a GSM/GPRS module, do not use it near unprotected electrical units or in areas where the use of mobile telephones is prohibited, such as hospitals and aircraft.

## Using traffic information

If you are using an RDS-TMC receiver to view TMC traffic information on your Mazda NB1, no connections need to be made as the receiver is built into your device.

The traffic sidebar is shown on the right side of the Driving view. The sidebar informs you about traffic delays while you drive, using glowing dots to show you where each traffic incident is located on your route.







The top of the traffic sidebar represents your destination and shows the total time delay due to traffic jams and other incidents on your route.

The central section of the traffic sidebar shows individual traffic incidents in the order they occur on your route.

The bottom of the traffic sidebar represents your current location and shows the distance to the next incident on your route.

To make the traffic sidebar more readable some incidents may not be shown. These incidents will always be of minor importance and only cause short delays.

The color of the pointers, as shown below, gives you an instant indication of the type of incident:

	Unknown or undetermined situation.
	Slow traffic.
	Developing traffic jam.
	Stationary traffic or road closure.

## Taking the fastest route

Your Mazda NB1 regularly looks for a faster route to your destination. If the traffic situation changes and a faster route is found, your Mazda NB1 will offer to replan your trip so you can use the faster route.

You can also set your Mazda NB1 to automatically replan your trip whenever a faster route is found. To apply this setting, tap **Traffic settings** in the Traffic menu.

To manually find and replan the fastest route to your destination, do the following:

1. Tap the traffic sidebar.

**Tip:** If you find that tapping the sidebar opens the Main menu instead of the traffic menu, try tapping the sidebar with your finger resting on the edge of the screen.

A summary of traffic on your route is shown.

2. Tap **Options**.
3. Tap **Minimize delays**.

Your Mazda NB1 searches for the fastest route to your destination.

The new route may include traffic delays. You can replan the route to avoid all traffic delays, but a route which avoids all delays will usually take longer than the fastest route.

4. Tap **Done**.

## Minimizing delays

You can use TomTom Traffic to minimize the impact of traffic delays on your route. To minimize delays automatically, do the following:

1. Tap **Services** in the Main Menu.
2. Tap **Traffic**.
3. Tap **Traffic settings**.

4. Choose between always taking the faster route automatically, being asked or never changing your route.
5. Tap **Next** and then **Done**.
6. Tap **Minimize delays**.

Your device plans the quickest route to your destination. The new route may include traffic delays and may remain the same as the original route.

You can re-plan the route to avoid all delays, but this route is unlikely to be the quickest possible route.

7. Tap **Done**.

## Making commuting to work easier

The **Home to work** or **Work to home** buttons in the Traffic menu let you check your route to and from work with one tap of a button.

When you use either of these buttons, your device plans a route between your home and work locations and checks the route for possible delays.

The first time you use **Home to work**, you must set your traffic home and work locations by doing the following:

1. Tap the traffic sidebar to open the Traffic menu.

**Note:** If you already have a route planned, a summary of traffic incidents on your route is shown. Tap **Options** to open the Traffic menu.

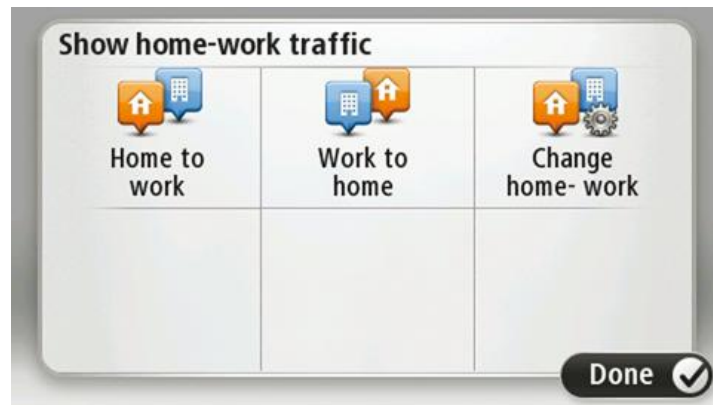
2. Tap **Show home-work traffic**.
3. Set your home location and your work location.

If you have already set the locations and want to change them, tap **Change home-work**.



You can now use the **Home to work** and **Work to home** buttons.

**Note:** The home location you set here is not the same as the home location you can set in the **Settings Menu**. In addition, the locations you use here do not have to be your actual home and work locations. If there is another route that you often travel, you can set Work/Home to use these locations instead.



For example, to check for delays on your route home before you leave the office, do the following:

1. Tap the traffic sidebar to open the Traffic menu.

**Note:** If you already have a route planned, a summary of traffic incidents on your route is shown. Tap **Options** to open the Traffic menu.

2. Tap **Show home-work traffic**.
3. Tap **Work to home**.

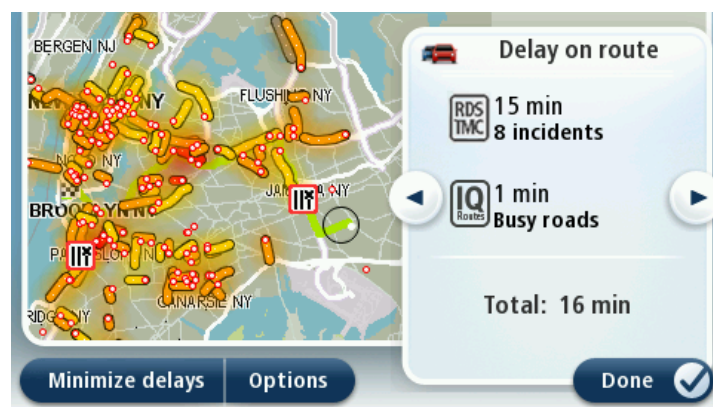
The Driving View is shown and a message is displayed telling you about traffic incidents on this route. The Traffic sidebar also shows any delays.

### Getting more information about an incident

To check for delays on your route, tap **Show traffic on route** in the Traffic menu. Your navigation device shows a summary of the traffic delays on your route.

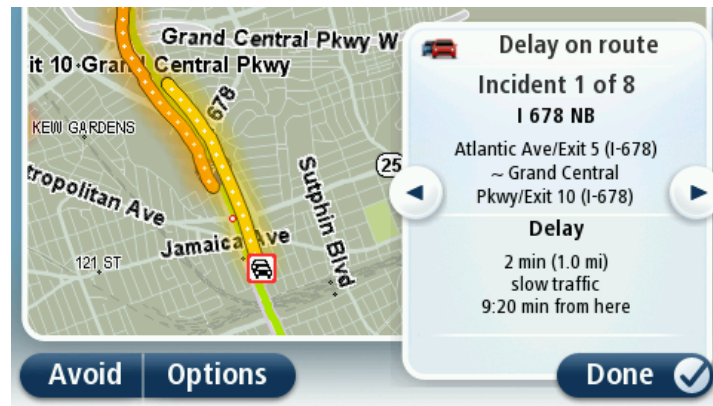
The total includes any delays due to traffic incidents and those due to busy roads, with information provided by IQ Routes.

Tap **Minimize delays** to check if you can reduce the delay.





Tap the left and right arrow buttons to move through each incident in turn, viewing the details of each one. This includes the type of incident, for example road works, and the length of delay caused by this incident.



You can also access the details about individual incidents by tapping **View map** in the Main Menu and then tapping on the traffic incident symbol.

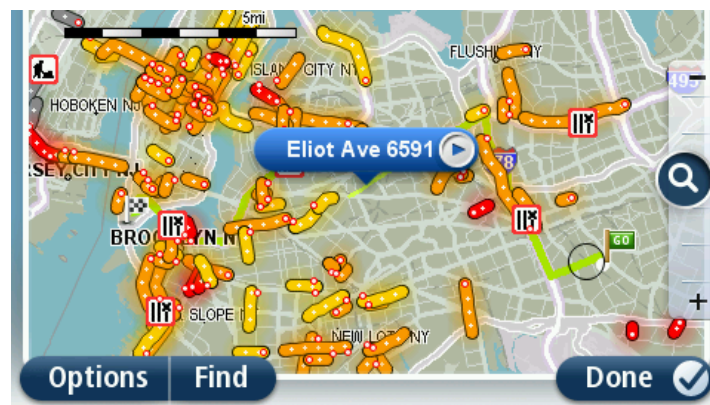
When shown on the map, a traffic incident starts with an icon. In the case of a traffic jam, the direction of the incident is from the icon towards the other end.

### Checking traffic incidents in your area

Get an overview of the traffic situation in your area, using the map. To find local incidents and their details, do the following:

1. Tap the traffic sidebar then tap **Options** to open the Traffic menu.
2. Tap **View map**.  
The map overview screen is shown.
3. If the map does not show your location, tap the marker to center the map on your current location.

The map shows traffic incidents in the area.



4. Tap on any traffic incident to get more information.

A screen is shown that gives you detailed information about the incident you chose. To display information about surrounding incidents use the left and right arrows at the bottom of this screen.

## Changing traffic settings

Use the **Traffic settings** button to choose how traffic information works on your navigation device.

1. Tap the traffic sidebar then tap **Options** to open the Traffic menu.
2. Tap **Traffic settings**.



3. To hear a beep sound when a new traffic incident occurs on your route, select **Report if traffic on route changes** and then tap **Done**.
4. If you are using an RDS-TMC Traffic Receiver, you will be able to select the setting **Tune manually by entering a frequency**. If you select this option, the button **Tune manually** is shown in the Traffic menu. Tap **Tune manually** to enter the frequency of a particular radio station you want to use for RDS-TMC traffic information
5. If a faster route is found while you are driving, Traffic can replan your journey to use the faster route. Select one of the following options and then tap **Done**.
  - **Always switch to that route**
  - **Ask me if I want to change**
  - **Never change my route**

## Traffic incidents





Traffic incidents and warnings are shown on the map, in the Driving View and on the Traffic sidebar.

To find out more about an incident, tap **Browse Map** in the Main Menu. Tap on a traffic incident symbol on the map to see information about that incident. To display information about surrounding incidents, use the left and right arrows at the bottom of the screen.

There are two types of incident and warning signs:

- Symbols shown in a red square are traffic incidents. Your navigation device can replan to avoid them.
- Symbols shown in a red triangle are weather related. Your device does not replan to avoid these warnings.

Traffic incident symbols:

	<b>Accident</b>
	<b>Road works</b>
	<b>One or more lanes closed</b>
	<b>Road closed</b>



**Traffic incident**

---



**Traffic jam**

---

Weather related symbols:

---



**Fog**

---



**Rain**

---



**Wind**

---



**Ice**

---



**Snow**

---



**Note:** The incident avoided symbol is shown for any traffic incident that you avoid using a traffic service.

## Traffic menu

To open the Traffic menu, tap the Traffic sidebar in the Driving View then tap **Options**, or tap **Traffic** in the Services menu.

The following buttons are available:

---



**Minimize traffic delays**

---



**Show home-work traffic**

---

Tap this button to re-plan your route based on the latest traffic information.

Tap this button to calculate the quickest route from your home location to your place of work and back.



### Show traffic on route

Tap this button for an overview of traffic incidents along your route.

Tap the left and right buttons for more detailed information about each incident.

Tap **Replan** to replan your route and avoid the traffic incidents that are shown on the map.

---



### View map

Tap this button to browse the map and see the traffic incidents shown on the map.

---



### Change Traffic settings

Tap this button to change your settings for how the Traffic service works on your device.

---



### Read aloud traffic info

Tap this button to hear spoken information about traffic incidents on your route.

**Note:** Your TomTom device must have a voice that speaks street names installed to read information aloud.

---

# Speed Cameras

---

## Important

---

**Important:** When you purchase your car with its Mazda NB1, alerts for Speed Cameras are switched off. If you wish to receive alerts for speed camera locations, tap **Services**, then tap **Speed Cameras**. Tap **Enable alerts**. You then receive alerts for speed camera locations.

---

## Important

---

**Important:** If you hear beeps and see no message on your screen, this is because you are in radio mode and the beeps are coming from your navigation device. The beeps are warning sounds given by the Speed Camera service to warn you of the presence of a speed camera.

---

## About Speed Cameras

**Note:** LIVE Services are available in the country of purchase. For more information on available services, go to [tomtom.com/services](https://www.tomtom.com/services).

The Speed Cameras service warns you about the following roadside camera locations:

- Speed Camera locations.
- Dangerous roads.
- Speed trap locations.
- Speed enforcement zone camera locations.
- Toll booth camera locations.
- Red light camera locations.

## Speed Camera warnings

By default, warnings are given 15 seconds before you reach a speed camera location. To change the number of seconds or warning sound, tap **Alert settings** in the Speed Cameras menu.

You are warned in three ways:

- Your device plays a warning sound.
- The type of speed camera and your distance from the camera location is shown in the Driving View. If a speed restriction has been reported for the camera, the speed is also shown in the Driving View.
- The location of the speed camera is shown on the map.

**Note:** For speed enforcement zone cameras, you are warned by a combination of icons and sounds at the start, middle and end of the Speed Enforcement Zone.

## Changing the way you are warned



### Alert settings

To change the way your Mazda NB1 warns you about speed cameras, tap the **Alert settings** button.

You can then set how close you want to be to a speed camera before you are warned and what type of sound will be played.

For example, to change the sound that is played when you approach a fixed speed camera, do the following:

1. Tap **Services** in the Main Menu.
2. Tap **Speed Cameras**.
3. Tap **Alert settings**.

A list of speed camera types is displayed. A speaker is shown next to the speed camera types that have been set for an alert.

4. Tap **Fixed cameras**.
5. Tap **NO** to keep the fixed safety camera alerts.
6. Enter the time in seconds for when a warning is given before you reach a camera. Then tap **Next**.
7. Tap the sound you want to be used for the warning.

**Tips:** To switch off warning sounds for a camera type, tap **Silence** in step 7 above. You still see a warning in the Driving View if you switch off the warning sound.

8. Tap **Done** to save your changes.

## Safety camera symbols

Safety cameras are shown as symbols on the Driving View.

When you approach an area where an alert is located, you see a symbol and a warning sound is played.

You can change both the warning sound and the number of seconds that the warning is issued before reaching the alert.



Fixed speed camera



Red light camera

---



Toll booth camera



Restricted road camera - located on a minor road that reduces traffic on a larger road



Other cameras



Speed trap hotspot



Speed Enforcement Zone



Accident black spot



Bi-directional speed camera



Ungated railroad crossing

---

## Report button

To show the report button in the Driving View, do the following:

1. Tap **Services** in the Main Menu.
2. Tap **Speed Cameras**.
3. Tap **Enable report button**.
4. Tap **Done**.

The report button is shown on left-hand side of the Driving View or, if you are already using the quick menu, it's added to the buttons available in the quick menu.

**Tip:** To hide the report button, tap **Disable report button** in the Speed Cameras menu.

## Reporting a new speed camera while on the move

To report a speed camera on the move, do the following:

1. Tap the report button shown in the Driving View or in the quick menu to record the location of the camera.

If you tap the report button within 20 seconds of receiving a speed camera warning, you get the option to add a camera or remove a camera. Tap **Add camera**.

2. Tap **Fixed camera** or **Speed trap**, depending on the type of camera you are reporting.
3. Select the camera location on the map and confirm that it is correct.
4. Tap the type of fixed camera you want to report, for example, a red light camera.

**Note:** If the type of camera you choose has a safety restriction, you can also enter the speed.

You see a message confirming that a report has been created.

## Reporting a new speed camera while at home

You do not need to be at the location of a speed camera to report the new location. To report a new speed camera location while you are at home, do the following:

1. Tap **Services** in the Main Menu on your navigation device.
2. Tap **Speed Cameras**.
3. Tap **Report speed camera**.
4. Tap **Fixed camera** or **Speed trap** depending upon the type of speed camera.
5. Use the cursor to mark the exact location of the camera on the map, then tap **Done**.
6. Tap **Yes** to confirm the location of the camera.
7. Tap on the type of camera you want to report and if necessary, choose the speed restriction for the camera.

You see a message confirming that a report has been created.

## Reporting incorrect camera alerts

You may receive an alert for a camera that is no longer there. To report an incorrect camera alert, do the following:

**Note:** You can only report an incorrect camera alert while you are at the location.

1. While you are at the location of the missing camera, tap **Report** in the Driving View.

**Note:** This must be done within 20 seconds of receiving the camera alert.

2. Tap **Remove**.



## Types of fixed speed camera you can report

When you report a fixed speed camera, you can select the type of fixed camera you are reporting.

These are the different types of fixed speed camera:



This type of speed camera checks the speed of passing vehicles.

### Speed Camera



This type of camera checks for vehicles breaking traffic rules at traffic lights.

### Red light camera



This type of camera monitors traffic at toll road barriers.

### Toll booth speed camera



This type of speed camera checks the average speed of vehicles between two fixed points.

### Speed Enforcement Zone



This type of camera checks traffic on roads where access is restricted.

### Vehicle restriction



All other types of cameras that do not fall into any of the above categories.

### Other cameras

---

## Speed Enforcement Zone warnings

There are several types of visual and audible warnings that you may see and hear when you meet a speed enforcement zone camera.

You always receive a start and end zone warning regardless of the speed you are traveling at. Intermediate warnings, if given, occur every 200 meters.

All the warnings are described below:



#### **Start of zone warning**

As you approach the start of a Speed Enforcement Zone, you see a visual warning in the top left hand corner of the Driving View with a distance to the camera underneath it. You hear an audible warning.

You also see a small icon on the road showing the position of the speed enforcement zone camera at the start of the zone.

---



#### **Intermediate warning - type 1**

Once in the speed check zone, if you are not speeding and have already received a start of zone warning, you see a visual warning in the Driving View. This reminds you that you are still in the speed check zone.

---



#### **Intermediate warning - type 2**

Once in the speed check zone, if you are driving faster than the permitted speed and have already received a start of zone warning, you see a visual warning in the Driving View indicating the maximum permitted speed. You also hear a quiet audible warning. These warnings are there to remind you to slow down...

---



#### **Intermediate warning - type 3**

Once in the speed check zone, if you are driving faster than the permitted speed and have not received a start of zone warning, you see a visual warning in the Driving View indicating the maximum permitted speed. You also hear a loud audible warning.

These warnings occur at the FIRST intermediate point only and are there to remind you to slow down...

---



#### **End of zone warning**

As you approach the end of a Speed Enforcement Zone, you see a visual warning in the Driving View with a distance to the camera shown underneath it. You hear an audible warning.

You also see a small icon on the road showing the position of the speed enforcement zone camera at the end of the zone.

---

### **Speed Cameras menu**

To open the Speed Cameras menu, tap **Services** in the Main Menu and then tap **Speed Cameras**.

---



**Report safety camera**

---

Tap this button to report a new safety camera location.



Tap this button to set the alerts you will receive and the sounds used for each alert.

#### Alert settings

---



Tap this button to disable alerts.

#### Disable alerts

---



#### Enable report button

---

Tap this button to enable the [report button](#). The report button is shown in the Driving View or in the quick menu.

When the report button is shown in the Driving View, this button changes to **Disable report button**.

---

# TomTom HOME

---

## About TomTom HOME

Using TomTom HOME you can register and manage your navigation device to receive free updates and buy new services. It's a good idea to connect to HOME frequently so you can do the following:

- Download for free the most recent map available for your device, if you connect to TomTom HOME within 60 days of buying your device.
- Download updates for your device for free, including Map Share updates and other services included with your product.
- Add new items to your device, like maps, voices and POIs, as well as buy TomTom services and manage your subscriptions.
- Share your map corrections and other content with the TomTom community.
- Make and restore backups of your device.

When using HOME, you can get help with what you are doing from the HOME Help. You can also read about all the other things that HOME can do for you.

**Tip:** We recommend using a broadband internet connection whenever you connect to HOME.

## Installing TomTom HOME

The steps below refer to Internet Explorer on Windows XP. If you're using another browser or operating system, visit [tomtom.com/support](http://tomtom.com/support) for more information.

To install TomTom HOME on your computer, do the following:

1. Connect your computer to the internet.
2. Click the link below to download the latest version of TomTom HOME:  
[tomtom.com/home](http://tomtom.com/home)
3. We recommend downloading the file to your computer by clicking **Save**.
4. Once the download is complete, click **Open**.
5. If you accidentally closed the Download Complete window, locate the file **TomTomHOME2winlatest.exe** on your computer and double-click it.
6. If you get a security warning, click **Run**.
7. Click **Next**, then click **Install**.

The installation starts.

8. Once the installation is complete click **Finish**.

## MyTomTom account

To download content and services using TomTom HOME, you need a MyTomTom account. You can create an account when you start using TomTom HOME.

Note: If you have more than one TomTom device, you need a separate MyTomTom account for each device.

If you have a MyTomTom account, you can access the following benefits online using HOME or by using the MyTomTom section of [tomtom.com](http://tomtom.com):

- Services - click **Services** on the TomTom website to subscribe to services such as real-time traffic and safety camera information.
- Newsletters - click **MyTomTom** followed by **Account details** on the TomTom website to manage newsletter subscriptions and language preferences for product news
- Support - click **My Questions** on the TomTom website to track and view your case history and all email conversations you have with TomTom about technical support issues via the website. You can also update cases with new information.
- Orders - click **My Orders** on the TomTom website to view items you ordered from the TomTom website and your order history.
- TomTom Map Share - report and download map corrections by joining the Map Share community using HOME. You can then benefit from shared reporting of map issues such as missing streets and wrong driving instructions.
- Downloads - download free items using TomTom HOME.

## Updating your device

Before you start, make sure you have a backup of your device or memory card. For more information, see [Backing up your navigation device](#).

You can check for updates for your maps, services and for a whole range of other free items or items for purchase. The instructions below describe how to update the TomTom application on your device.

To check for an updated application version do the following:

1. Insert your memory card into the card reader connected to your computer.
2. Wait for TomTom HOME to start.
3. If HOME does not automatically check for updates, click **Update my device** in the HOME menu.

**Note:** If you would like to install an application you downloaded previously, click **Add Traffic, Voices, Speedy Cameras, etc. > Items on my computer**.

4. If a new application is available, it is listed on the next screen.
5. Make sure the new application is selected, then click **Download updates**.  
HOME downloads the selected items...
6. HOME then installs the selected items on your memory card.

7. Click **Done**.
8. Click **Device > Disconnect Device** in the HOME menu. You can then disconnect your card from your computer.

### Introducing HOME help

In the TomTom HOME Help topics you can find a lot more information about how HOME can help you to manage contents and services on your navigation device.

You can also get help on the following:

- Initializing a memory card
- Using a card reader
- Updating your device-account combination
- The TomTom Route Planner
- Downloading free or shared sounds, images and symbols
- Installing themes and extensions

For information on how to create your own POIs, themes, voices, routes, color schemes, symbols and sounds, see [create.tomtom.com](http://create.tomtom.com).

# Customer support

---

## Getting help to use your navigation device

You can get further help by going to [tomtom.com/support](http://tomtom.com/support).

## Status & information



Tap this button to view technical information about your device, such as the serial number for your device and the version of the main TomTom application.

### Version information



Tap this button to see the current status for GPS reception.

### GPS Status



Tap this button to check the status of your subscriptions to TomTom Services.

### My Services



Tap this button to change whether you want to share information with TomTom.

### My information

# Addendum and Copyright

---

## Important Safety Notices and Warnings

### Global Positioning System

The Global Positioning System (GPS) is a satellite-based system that provides location and timing information around the globe. GPS is operated and controlled under the sole responsibility of the Government of the United States of America, which is responsible for its availability and accuracy. Any changes in GPS availability and accuracy, or in environmental conditions, may impact the operation of your TomTom device. TomTom does not accept any liability for the availability and accuracy of GPS.

### Use with care

Use of a TomTom device for navigation still means that you need to drive with due care and attention.

### Aircraft and hospitals

Use of devices with an antenna is prohibited on most aircraft, in many hospitals and in many other locations. A TomTom device must not be used in these environments.

## SPECIAL NOTE REGARDING DRIVING IN CALIFORNIA AND MINNESOTA

California Vehicle Code Section 26708 (a) (1) provides that "No persons shall drive any motor vehicle with an object or material placed, displayed, installed, affixed or applied upon the windshield or side or rear windows." Drivers in California should not use a suction mount on their windshield, side or rear windows.

**Note:** This section of the California Vehicle Code applies to anyone driving in California, not just California residents.

Minnesota State Legislature Statutes Section 169.71, subdivision 1, section 2 provides that "A person shall not drive or operate with any objects suspended between the driver and the windshield other than sun visors and rearview mirrors and electronic toll collection devices."

**Note:** this Minnesota Statute applies to anyone driving in Minnesota, not just Minnesota residents.

TomTom Inc. bears no responsibility for any fines, penalties or damage that may be incurred by disregarding this notice. While driving in any state with windshield mounting restrictions, TomTom recommends the use of the supplied Adhesive Mounting Disk or its Alternative Mounting Kit, which includes multiple options for mounting TomTom devices on the dashboard and the air vents. See [tomtom.com](http://tomtom.com) for more information about these mounting options.



## **FCC information for the user**



**THE DEVICE COMPLIES WITH PART 15 OF THE FCC RULES**

### **Federal Communications Commission (FCC) Statement**

#### **Radio and television interference**

This equipment radiates radio frequency energy and if not used properly - that is, in strict accordance with the instructions in this manual - may cause interference to radio communications and television reception.

This device has been tested and found to comply with the limits for a Class B digital device, pursuant to part 15 of the FCC rules. These limits are designed to provide reasonable protection against harmful interference in a residential installation. This equipment generates, uses and can radiate radio frequency energy and, if not installed and used in accordance with the instructions, may cause harmful interference to radio communications. However, there is no guarantee that interference will not occur in a particular installation. If this equipment does cause harmful interference to radio or television reception, which can be determined by turning the equipment off and on, the user is encouraged to try to correct the interference by one or more of the following measures:

Reorient or relocate the receiving antenna.

Increase the separation between the equipment and receiver.

Connect the equipment into an outlet on a circuit different from that to which the receiver is connected.

Consult the dealer or an experienced radio/TV technician for help.

Changes or modifications not expressly approved by the party responsible for compliance could void the user's authority to operate the equipment.

#### **Important**

This equipment was tested for FCC compliance under conditions that included the use of shielded cables and connectors between it and the peripherals. It is important that you use shielded cables and connectors to reduce the possibility of causing radio and television interference. Shielded cables, suitable for the product range, can be obtained from an authorized dealer. If the user modifies the equipment or its peripherals in any way, and these modifications are not approved by TomTom, the FCC may withdraw the user's right to operate the equipment. For customers in the USA, the following booklet prepared by the Federal Communications Commission may be of help: "How to Identify and Resolve Radio-TV Interference Problems." This booklet is available from the US Government Printing Office, Washington, DC 20402. Stock No 004-000-00345-4.

#### **FCC Declaration of Conformity**

Tested to comply with FCC standards for home or office use.

This device complies with part 15 of the FCC rules. Operation is subject to the following two conditions:

This device may not cause harmful interference.

This device must accept any interference received, including interference that may cause undesired operation.

**Responsible party in North America**

TomTom, Inc., 150 Baker Avenue Extension, Concord, MA 01742

Tel: 866 486-6866 option 1 (1-866-4-TomTom)

**Emissions information for Canada**

Operation is subject to the following two conditions:

This device may not cause interference.

This device must accept any interference, including interference that may cause undesired operation of the device.

This device complies with RSS-310 of Industry Canada. Operation is subject to the condition that this device does not cause harmful interference.

This Class B digital apparatus complies with Canadian ICES-003.

**Pacemakers**

Pacemaker manufacturers recommend that a minimum of 15cm (6 inches) be maintained between a handheld wireless device and a pacemaker to avoid potential interference with the pacemaker. These recommendations are consistent with independent research and recommendations by Wireless Technology Research.

**Guidelines for people with pacemakers**

You should ALWAYS keep the device more than 15 cm (6 inches) from your pacemaker.

You should not carry the device in a breast pocket.

If you have any reason to suspect that interference is taking place, turn OFF your device.

**Other medical devices**

Please consult your physician or the manufacturer of the medical device, to determine if the operation of your wireless product may interfere with the medical device.

**Exposure limits**

This device complies with radiation exposure limits set forth for an uncontrolled environment. In order to avoid the possibility of exceeding the radio frequency exposure limits, human proximity to the antenna shall not be less than 8 inches (20 cm) during normal operation.

**Model names**

1MI01, 1MI011

**This document**

Great care was taken in preparing this document. Constant product development may mean that some information is not entirely up to date. The information in this document is subject to change without notice.

TomTom shall not be liable for technical or editorial errors or omissions contained herein, nor for incidental or consequential damages resulting from the performance or use of this document. This document contains information protected by copyright. No part of this document may be photo-copied or reproduced in any form without prior written consent from TomTom N.V.

# Copyright notices

---

© 2012 TomTom. All rights reserved. TomTom and the TomTom logo are registered trademarks of TomTom N.V. Please see [tomtom.com/legal](http://tomtom.com/legal) for warranties and end user license agreements applying to this product.

© 2012 TomTom. All rights reserved. This material is proprietary and the subject of copyright protection and/or database rights protection and/or other intellectual property rights owned by TomTom or its suppliers. The use of this material is subject to the terms of a license agreement. Any unauthorized copying or disclosure of this material will lead to criminal and civil liabilities.

Data Source © 2012 TomTom  
All rights reserved.

Nuance® is a registered trademark of Nuance Communications, Inc. and is used here under license.

Some images are taken from NASA's Earth Observatory.

The purpose of NASA's Earth Observatory is to provide a freely-accessible publication on the Internet where the public can obtain new satellite imagery and scientific information about our home planet.

The focus is on Earth's climate and environmental change: [earthobservatory.nasa.gov](http://earthobservatory.nasa.gov)

The software included in this product contains copyrighted software that is licensed under the GPL. A copy of that license can be viewed in the License section. You can obtain the complete corresponding source code from us for a period of three years after our last shipment of this product. For more information, visit [tomtom.com/gpl](http://tomtom.com/gpl) or contact your local TomTom customer support team via [tomtom.com/support](http://tomtom.com/support). Upon request, we will send you a CD with the corresponding source code.

Linotype, Frutiger and Univers are trademarks of Linotype GmbH registered in the U.S. Patent and Trademark Office and may be registered in certain other jurisdictions.

MHei is a trademark of The Monotype Corporation and may be registered in certain jurisdictions.

Copyright © 2001-2012 VoiceBox Technologies, Inc. Registered in the U.S. Patent and Trademark Office. All rights reserved.